

EDELMA

Do you want a brand new lift...
Well Edelma will give you a cheap
1980s Otis that we will claim is a new
lift even though it is very outdated.

Edelma is a small spanish company
that were taken over by Otis and are
now part of Otis's generic brands.

Edelma lifts have 2 speed levelling
and an Otis Europa motor and Europa
logic. We will happily replace a 1980s
Otis lift saying that it is old, but we
replace it with the exact same lift, just
with newer Otis fixtures.



CALELLA

CL Balmes, 97-101
08370 Calella
(Barcelona)

ARGENTONA

CL Amics d'Argentona, 26
Pol. Ind. Can Negoci
08310 Argentona (Barcelona)

932 936 239 | nuria.casas@cruxentedelma.com

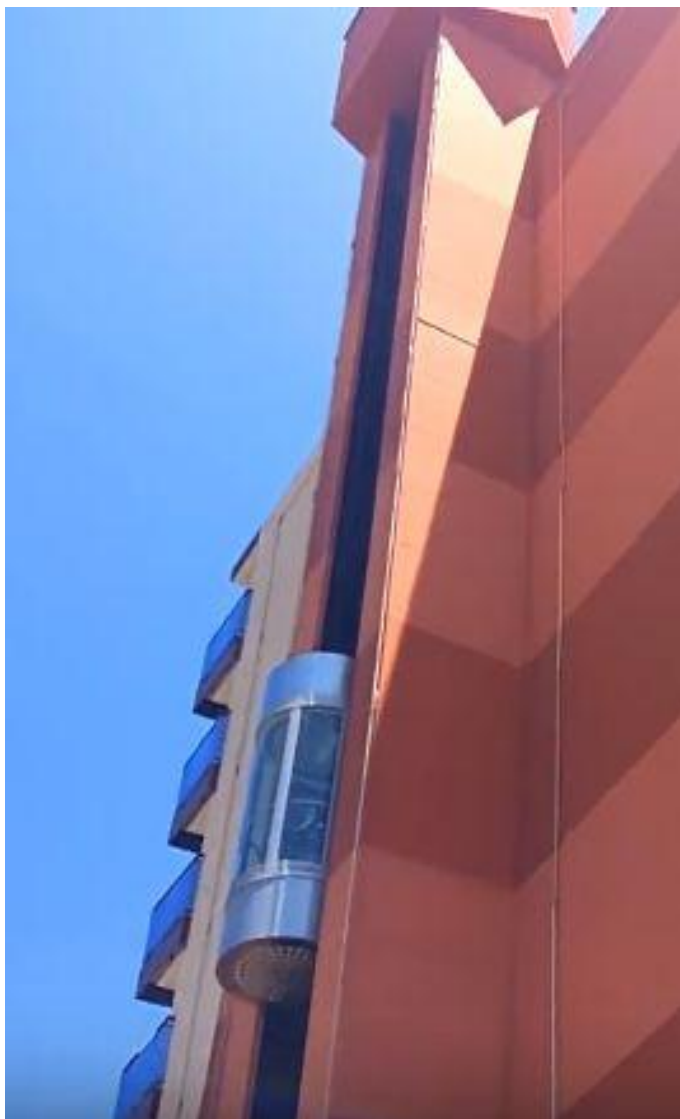
– En reconstrucció disculpin les molèsties –

The only good thing about them is there lifts do sometimes look pretty nice, and in some ways the old Otis 2 speed levelling is more efficient than modern Otis gen2s. But the quality of the lifts is very bad. They have tiny chassis, and overall very bad build quality. The cheapness of their lifts is unbelievable.

They also now install gen2s. These are the cheap version of gen2 (as installed by Express lifts alliance in the UK). These lifts actually do look nice, and have a posh screen inside them to pretend that it is a posh lift. But the lift itself is built very flimsily. It makes a normal gen2 look like the most heavy duty lift you could imagine.

This seems very suited for the spanish market, very cheap lifts that look somewhat nice on the inside.

Edelma lifts break down all the time. They are very unreliable. They are a very cheap version of a lift that was already rather cheap in places.



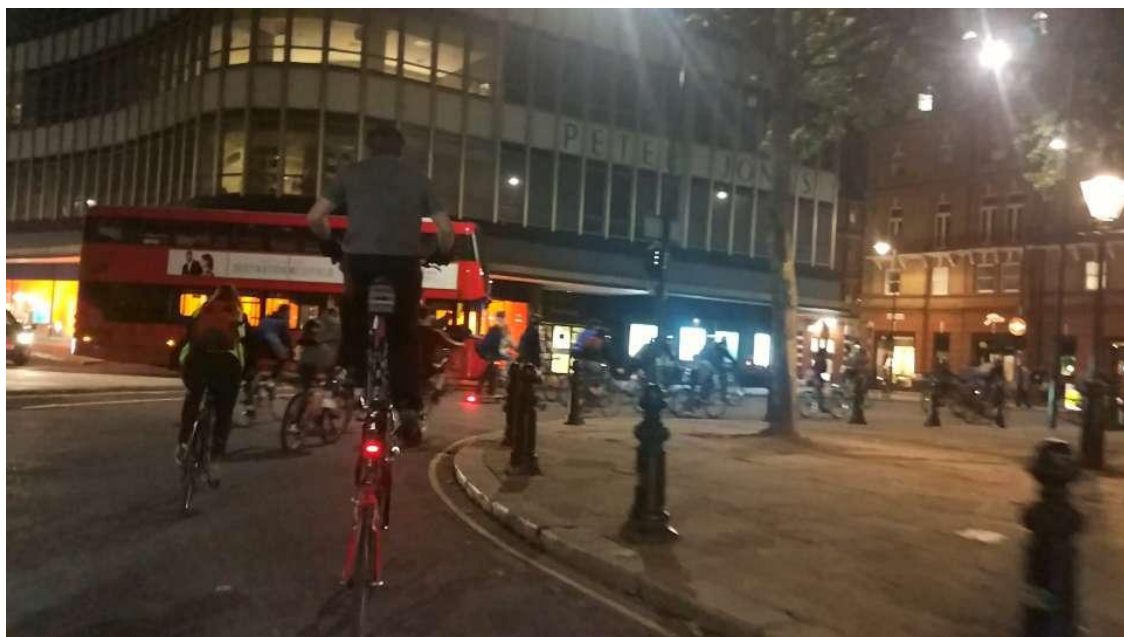


CRITICAL MASS

SEPTEMBER 2017

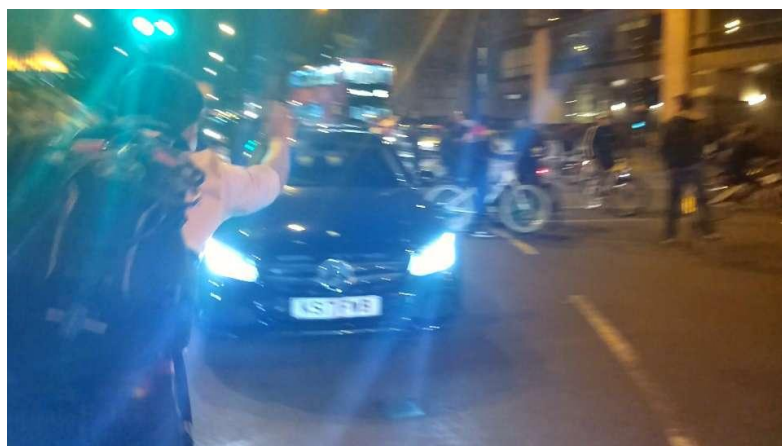
Critical mass was amazing as usual.

At one point we went around Sloane Square several times which held up traffic in a satisfying way.



Lots happened just like it always does. Lots of angry car drivers.

At one point everyone stopped for half an hour in the middle of the road which really pissed off the car drivers.



VANCITY ELEVATORS

Hey guys, I'm back from a long summer break. A lot of events happened during over my break, so I am feeling pleased to you show you guys what has happened.

MAY 2017: BYD DEMO ARRIVES IN VANCOUVER FOR 3 MONTHS



Build Your Dreams



BYD Auto has leased a K9 to Translink for demonstration purposes. Unfortunately, after 2 days into service, the bus got into a serious suspension issue, and it has been placed out of service for weeks. When it came back, my first impression of this BYD was awful. Here are just some of things that I didn't like about it.

1. Kneeling takes too long.
2. Wheelchair ramp speed is slow.
3. Mirrors.
4. Touchy brakes.
5. Uncomfortable seats.

The motor sounds very nice, but I don't think Translink should buy these. There are other bus companies that make electric buses like NovaBus, and New Flyer. Translink will testing both of these starting soon around late fall.

Here is a video of the BYD:

<https://www.youtube.com/watch?v=-clIKh5py6A&t=134s>

EXPLORING A BRAND NEW OFFICE BUILDING!

This office building opened in 2015, but most of the floors are still vacant! The lifts to these floors are locked off, but I have found a way!



The office building uses a destination dispatch system. The floors are locked off unless you have a card.



One of the lifts has its fire control panel opened.



A Trip Back in Time: 1964 GM New Look TDH-4519

On August 2017, a company called the Transit Museum Society of British Columbia brought the 1964 GM New Look for a fan trip. We travelled around the city of Vancouver for the whole afternoon until dusk.

This bus is powered by a Detroit Diesel 6V71N diesel engine, and has a Allison VH transmission.

I would like to thank the organizers for planning this trip, and making the trip successful.

This bus was bought in 1964 by B.C. Hydro Transit (eventually renamed Metro Transit in the 70's, BC Transit in the 80's, and Translink in 1999) This bus was in service until the 1990's, before it was retired.



For anyone interested, here is a ride video:
<https://www.youtube.com/watch?v=r557DkNjWiE>



FERRY ADVENTURE TO: VANCOUVER ISLAND WITH...



At around late August of 2017, my family and I went on a ferry adventure to Vancouver Island. We took the Horseshoe Bay to Departure Bay, as we went to the city of Nanaimo first.

First, I would like to show you some highlights from the ferry ride.



M/V Coastal Renaissance is the ferry I went on. It was manufactured in 2007 by a German company called Flensburger Schiffbau-Gesellschaft.

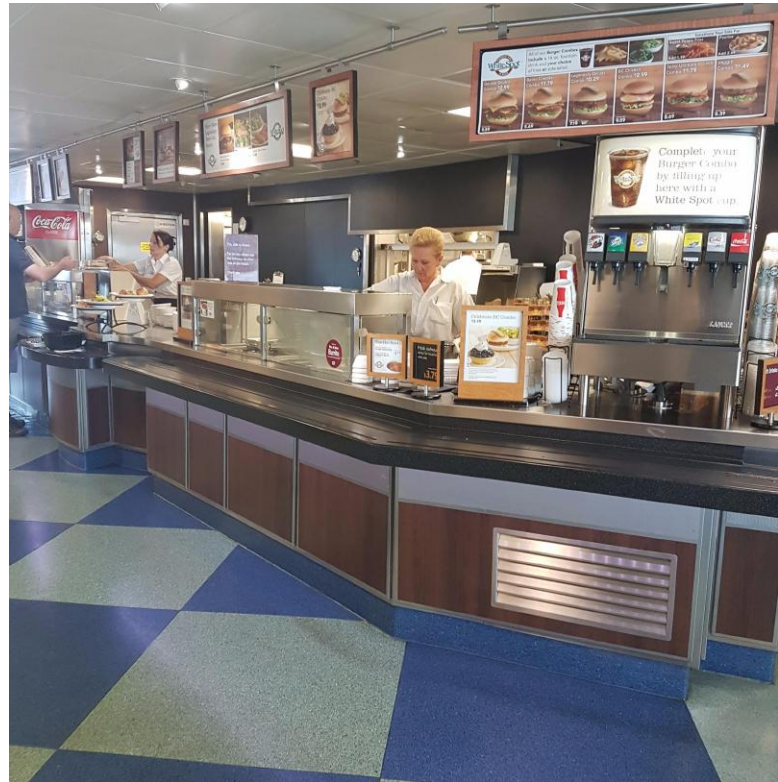
The aufzuge you see in this photo, is a generic German marine lift, built by a company called H.Braun.

Video of this aufzuge can seen here.
https://www.youtube.com/watch?v=_EYw8y34T7g

A MINI TOUR OF THE MARINE VESSEL



The passenger lounge area.



The cafe. Overpriced and shit.



The arcade. Sadly these will be removed soon due to the lack of popularity.

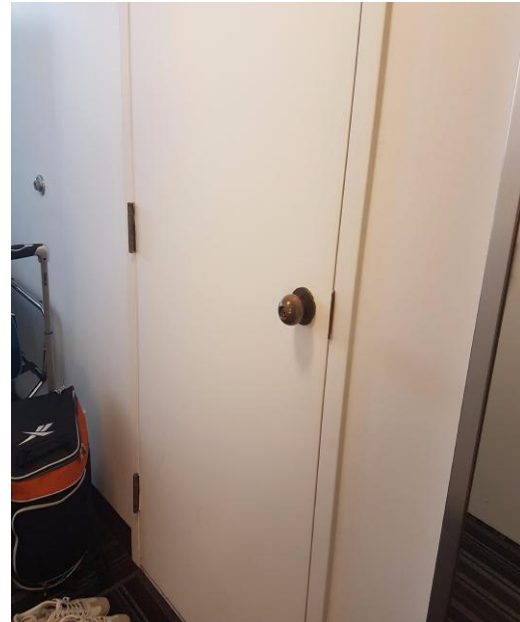
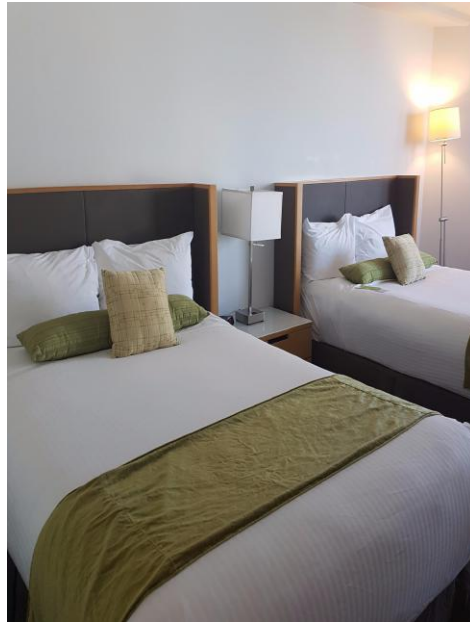


The gift shop.

Stop #1: Nanaimo, British Columbia, Canada

My family and I stayed in Nanaimo for 3 nights at the Coast Bastion Inn Hotel. We were suppose to stay at someone's house, but my dad complained about staying at other people's house. The building was built in the 1980's, but the hotel is completely renovated.

Hotel Room Tour



Buses around Nanaimo...



BC Transit operates buses in Nanaimo.

In Nanaimo, they only use New Flyer Xcelsior XN40's (CNG), and I hate them.

Engine: Cummins Westport ISL G, Transmission: ZF Ecolife 6AP1400B (Ecodeath)

We travelled to some small cities near Nanaimo. We went too....

- Parksville
- Qualicum Beach
- Coombs (Touristy city...)
- Ladysmith (Another touristy city...)

I SPOTTED A STANNAH LIFT IN CANADA!

While I was exploring Qualicum Beach....



Stannah
150
1867 • 2017

DID YOU KNOW?

Stannah was found on the same year when Canada was formed from the UK.



RYAN'S PAGE

Hi, I'm Ryan and i'm an electrician's apprentice. This month no pictures :(
So let's talk about my work related injury. When I was loading a roll of 5x16mm of copper wire into the van, my pants got stuck behind the tow hitch, which caused me to over stretch my knee. I was at home for 2 weeks. :(

Ground mounted lights

We were called to some malfunctioning ground lights and we discovered why.

Normally you would use 1cm stones, but the spot was mounted incorrectly.

Can wick away on this installation that was not done so when the lights get hot moisture

Would wick up into the fixtures the fixtures were replaced and mounted correctly.

Answer to last month's quiz:

Plug sockets cannot be open on the back and cannot be wired with flex.

This month's quiz:

If one were to pull a wire through a wall, does one need to use a PVC pipe?

YES/NO



What did I find in Sheffield?

I found some old lifts in a mostly original state, a massive shopping centre with its own bus, train and tram station, and some trams which are very weird looking on the inside.

SHITTYCOACH SUPERTRAM

Yuck. A tram run by shittycoach, and you can tell it's shit because they haven't been bothered to install ticket machines. Instead, you have to buy tickets off a conductor who runs up and down the tram saying the same thing over and over again. It's as if you're on a pacer, and every northerner knows how badly those things aged.

And that tram on the bottom isn't actually a tram - it's an actual train. Notice the 6 digit number on the front, something which only trains have. That is the new class 399, and it will be running on actual railway lines, going past places including Doncaster, Wakefield and York.



Page 2

THE MEADOWHALL SHOPPING CENTRE + RAIL STATION

I have never seen a shopping centre that has its own dedicated bus, tram and train station. A class 185 heading to Cleethorpes usually calls at that station, and you can even get a train to places like Wakefield and Leeds, but that would be an hour journey on a 142. It would be quicker if you went to Doncaster and then got a 321.

It is a very nice 1980s out of town shopping centre, and was built in a very similar style to Lakeside, which was also built around the same time.

But it isn't anymore, and when I went the entire shopping centre had been refurbished, and it was refurbished very well. Nobody will ever notice that it used to look really nice and 80s unless they went to Debenhams.

For a few years now, Debenhams have stopped caring about this particular shop. This is actually a good thing because it means they haven't bothered to refurbish it much. The shop has a lot of old signage still intact, like that Debenhams logo in the picture, it looks very 1980s on the inside, the signs on the outside are very 1980s and the lift is still in its original 1980s condition. Nice.



Page 3

JOHN LEWIS IN THE CITY CENTRE

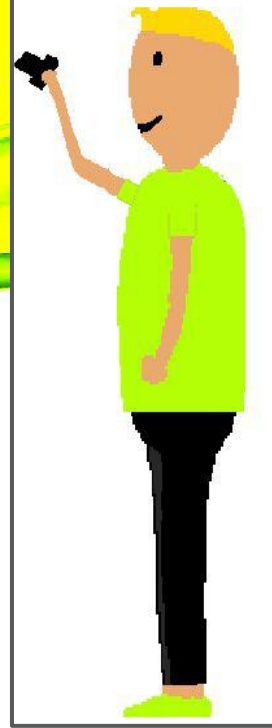
I just NEED to talk about John Lewis. The lifts there are amazing. When they were refurbished, it was hardly that intrusive, and the new things they added were designed to look like the old existing features, like the indicator, the hideous dewhurst buttons (who would press those?!) and the KoneOtis voice. And look at the outside indicator!



This all shows how superior Otis were with designing and building lifts back in the 20th century. What they built was not supposed to be thought of for at least 20 years.

BEN'S PAGES

I have done loads of things this month. I have been to Poznan in Poland, Basel in Switzerland, and Dublin in Ireland.



GATWICK'S LOST TRANSIT TRAIN



As well as the main transit train at Gatwick which goes between the 2 terminals, there also used to be a very short airside transit train that went from the terminal to one of the airplane buildings. It was very short and today a walkway has been built in its place. In this picture you can see that the tracks have been removed for a road at one part, and at another part they have built a building on the tracks. This long forgotten about transit train will never run again.

COACH & BUS UK 2017



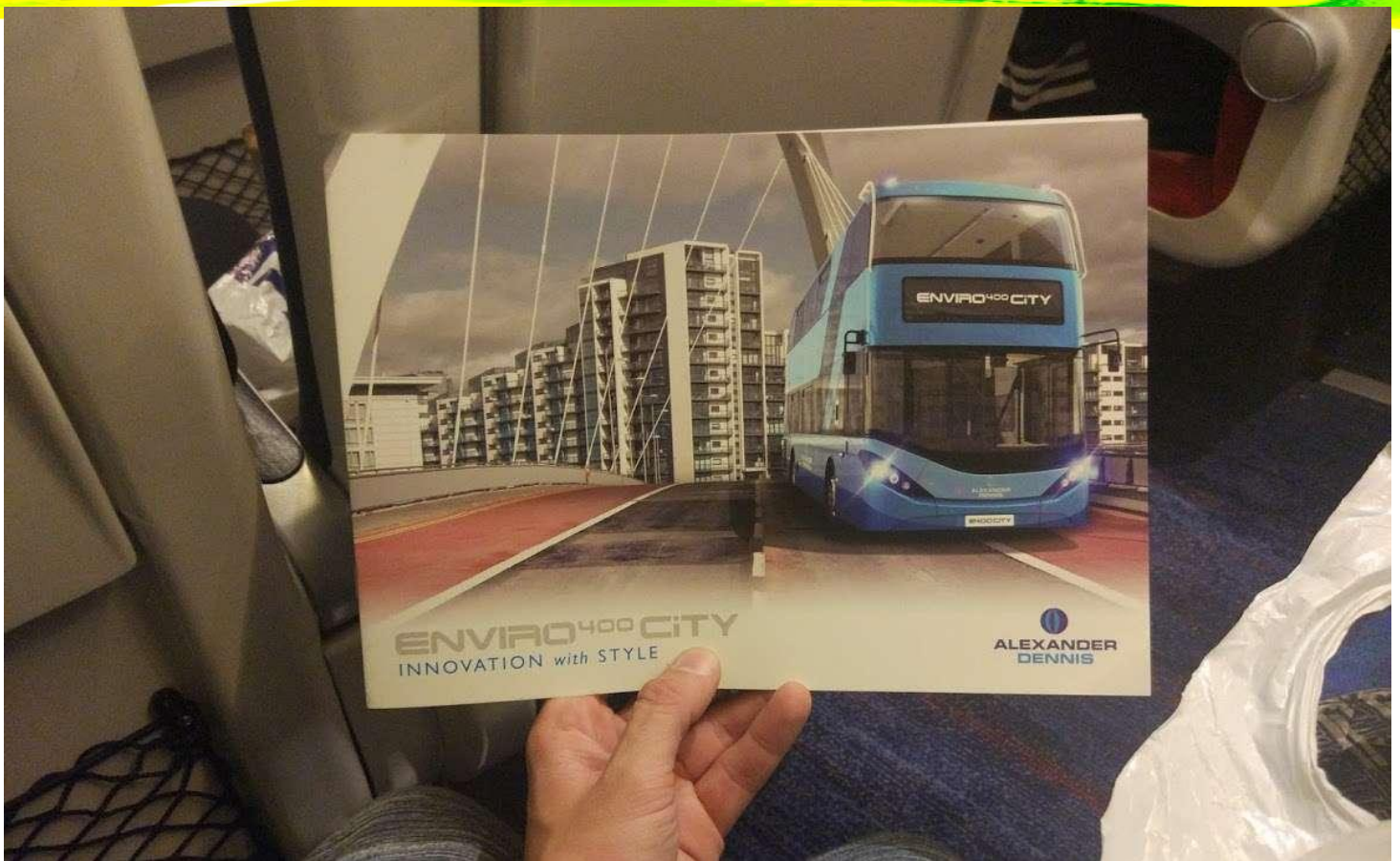
I went to the annual bus show at the NEC in Birmingham. This show is all about new buses and bus products for companies.

The event is very much for professionals and if any bus enthusiasts are caught at the event they are kicked out.



There was even a Heathrow pod stand





Everyone is going electric. Electric buses are the future.

There was a talk from a guy from South Croydon bus garage, which has started operating Optare electric buses. What I didn't realise was how big the infrastructure cost was of supplying the electricity distribution to the depot for high KW charging.



Caetano electric bus chassis

There were loads of stands supplying various bus products.



ELECTRIC BUS RIVALRY



There were loads of electric buses on show. The future of buses is obviously electric, meaning that there is massive changes in the industry.

We pretended that we were looking to buy a bus (definitely not bus enthusiasts) and we had a very interesting talk with someone from BYD. He told us about how the Irizar electric (pictured left) used old battery technology and was not as good as the BYD.

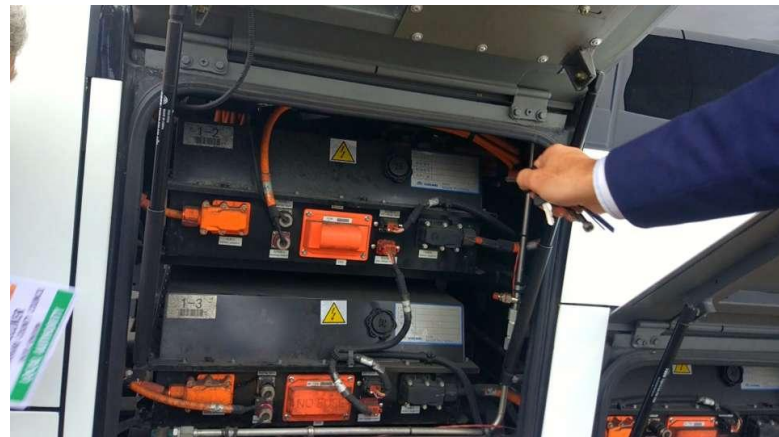
Also at the event was a new chinese rival, Yutong.

The guy showing off their bus told us about how all components of the bus were build by Yutong, and did not use a single brought in part.

He also told us that their propshaft motor was better than BYDs wheel hub motors as the motor didn't take shock from the rode (I disagree as wheel hub motors have less parts and no propshaft resistance). Sadly the guy was unable to tell be if the bus used induction or synchronous motors (a very simple question which he should have known).



The bus has battery packs in every space they could put one in.



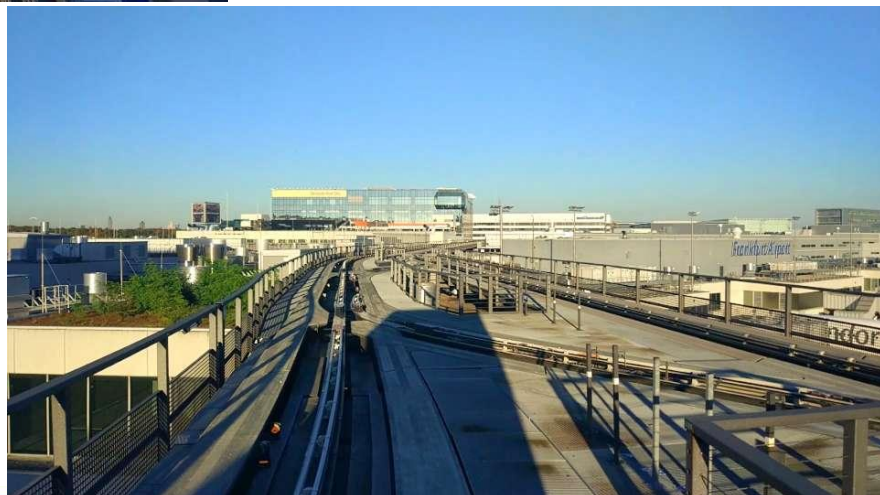
FRANKFURT AIRPORT TRANSIT

A new station has just opened on the Frankfurt Airport transit train. This transit train is a Bombardier CX-200. It goes between 4 parts of the airport.

This transit is very unusual and interesting. Each transit train has 2 coaches, one is airside and one is landside. It is very interesting that you can travel between terminals both before and after you have passed security. When you fly from the airport you can either pass security before or after you travel to the terminal you fly from.



Frankfurt airport is by far the best airport I have ever flyed from. The people flow was beyond excellent. X-ray is at the gate, which makes it more efficient and much less crowded. The transit tram has separate cartridges for landside and airside.



CUSTOM TRAFFIC LIGHTS



These custom traffic lights have been installed at trafalgar square to celebrate the gay pride event.

It is very interesting to see these custom lights as they are actually Peek traffic lights with Siemens LEDs. They look like any other traffic light apart from the custom displays.



BASEL ADVENTURE

CHEAP FLIGHT ADVENTURE TO



I went on a cheap flight adventure to Basel. My plane was late and I didn't get very long in Basel, but I still found loads of amazing lifts simply because Basel has so many.



Basel is home to loads of rare Schindlers, including this very rare Schindler direct drive with destination dispatch, even though there is only one lift in the set.



It is crazy how many interesting lifts there are here. Above is an awesome Schindler R series, which there are loads of. Left is an awesome 60s Schindler, very rare and awesome.

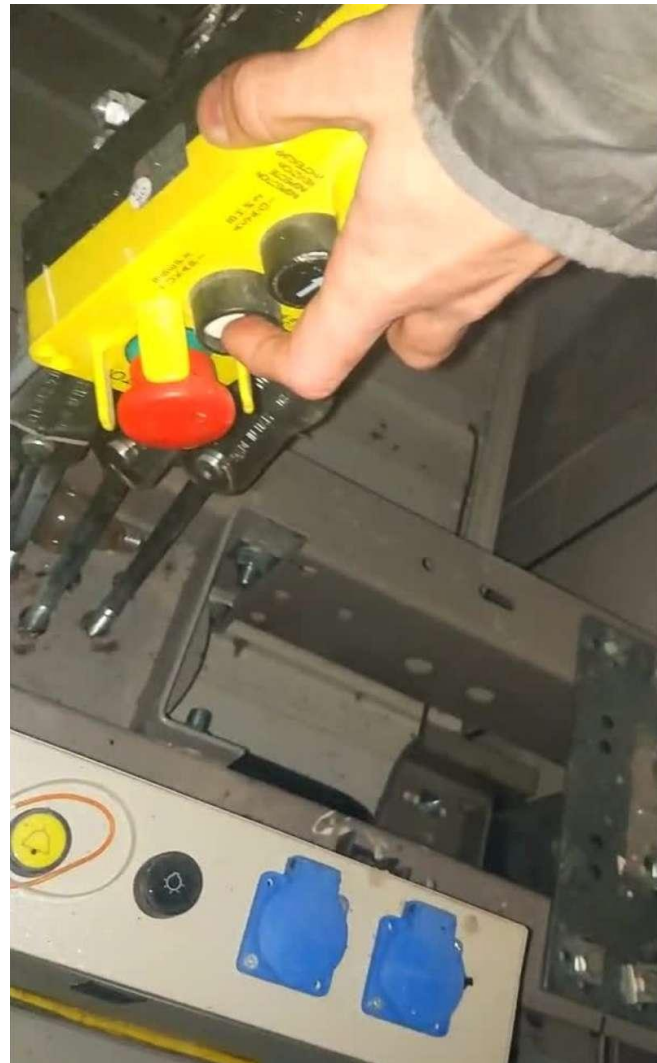


POZNAN ADVENTURE

CHEAP FLIGHT ADVENTURE TO
POZNAN



Poznan is a very interesting place. It is full of trams and towers. It is a very awesome place to look for lifts.



Floor 0.5!



There are towers everywhere. It has a very communist feel to it. Most of the towers have inner door less lifts which are very nice.





Poznan has some epic 1950s trams which are second hand from Germany. These trams are completely awesome.

The interior looks amazing. It is so nice that these awesome old trams are still in service.



Here is one of the 1950s trams on a new short underground section of the tram routes. It is such a contrast to see such an old tram at this modern station.





The tram that I named "2 little trams" on the fast tram route. This tram is a modern version of the old design of having a tram and trailer.

The fast tram route is very nice. It uses the same trams so it doesn't go any faster than the other routes, but it is still very interesting.



There are so many interesting trams here. All of them are interesting in their different ways.

A modern tram.

The dot matrix that displays the route number in a circle above the tram is odd looking.



The interior of one of the new low floor trams.



There are so many epic trams. All of them have the same acceleration of 3 mph/sec and go a top speed of just over 30 mph.



DUBLIN ADVENTURE

CHEAP FLIGHT ADVENTURE TO

DUBLIN

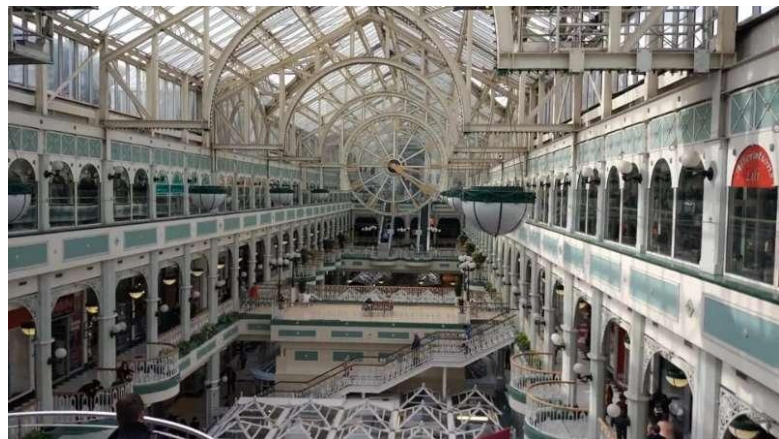
Me and Jordan went to Dublin.
We went here because we could
both get here from our local
airports.



The Dart trains are very interesting
and old and make a great sound.
They are the most interesting thing in
Dublin.



The Dart trains have a very nice
old interior. The motors are DC
with DC pulsing. Also all the
trains here are broad gauge,
rather than standard gauge in
Great Britain.



YELLOW MAN LIGHTS IN DUBLIN

Ireland has a yellow man on all of their pedestrian lights. I don't really know why they do this, but it is very interesting.

I don't know of any other place in the world that does this. It is interesting to see common types of traffic light, but with a yellow man.

Siemens



Above: AluStar

Below: Mellor





The trams were pretty average. There are 2 tram routes which don't connect with each other. The trams are Alstom Citadis, which is rather bog standard.

Wrightbus series 1 with old seats that look much older than this model of bus.

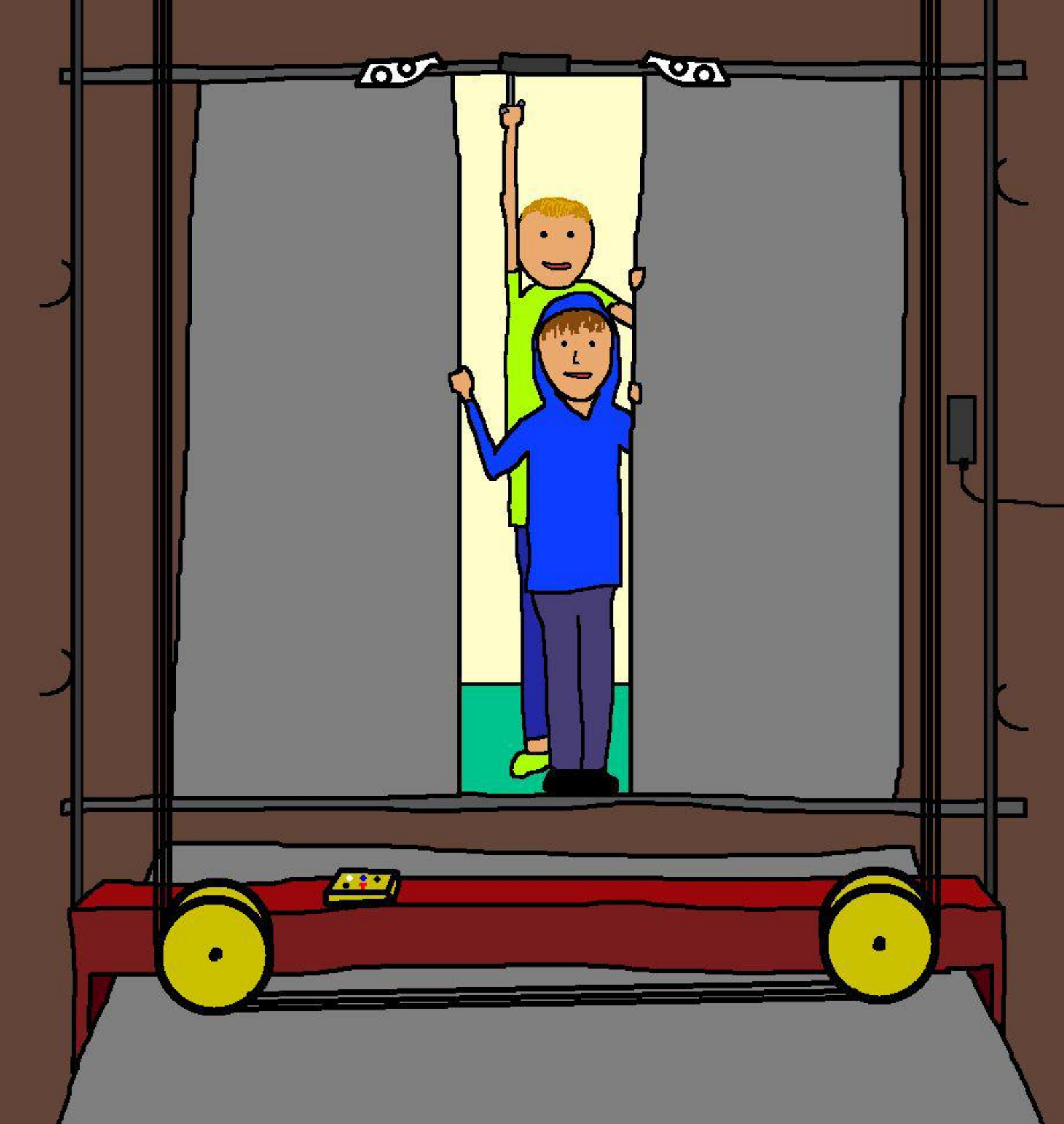


Ecodisc with a door close button on the outside. As far as I know there is no multiplex option for a close button to be on a landing call station. Does this mean that it is set as a normal close button, which would mean that someone outside the lift can make the doors close while the lift is on a different floor.

On top a cheap lift. Getting on top lifts is hard here has everybody notices what you are doing here.







THE END