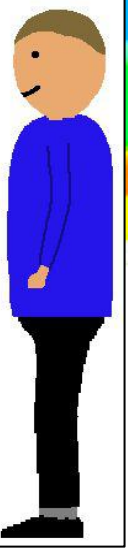




# Moo Cow Diarrhoea Tasting Club MAGAZINE! (AUGUST 2018)

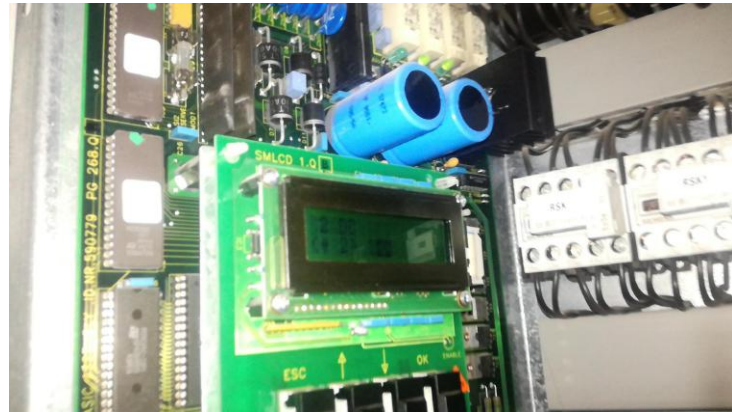
# FAILS IN GERMANY'S PAGE

## More motor room fun!



This is probably the best motor room We found this month. A completely original Haushahn relay logic. The lift car is original as well apart from the fact that they added inner doors - GRRR

I finally managed to find a Schindler SMLCD to experiment with, the logic is password protected But unlike a lot of other logics, you can still get Into the fault log which is probably the most Important thing if a different company is maintaining this lift, this was the very first Version of the SMLCD, i wonder if the newest Version operates differently to this one.

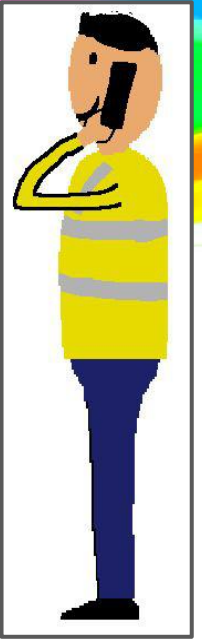


We then went to some towers to visit the motor rooms which weren't very interesting as they are all just Otis mods. The building has 20 floors and the lift just runs at 1.4 m/s sadly.



# JORDAN'S PAGES

## A CLIMBING FRAME IN A SHOPPING CENTRE



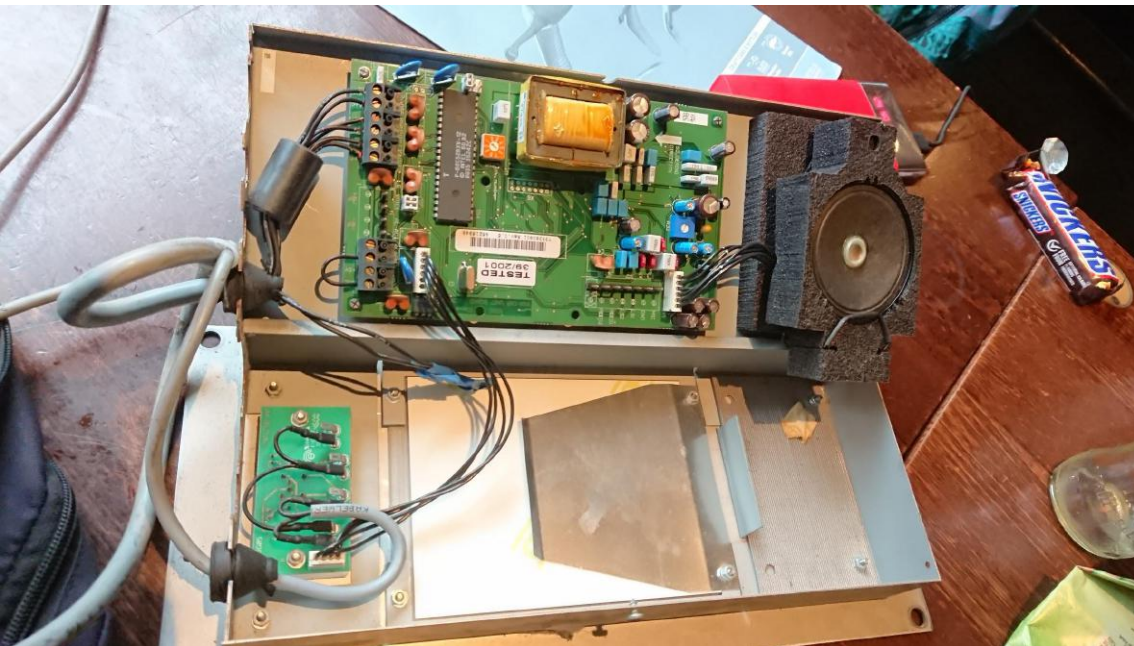
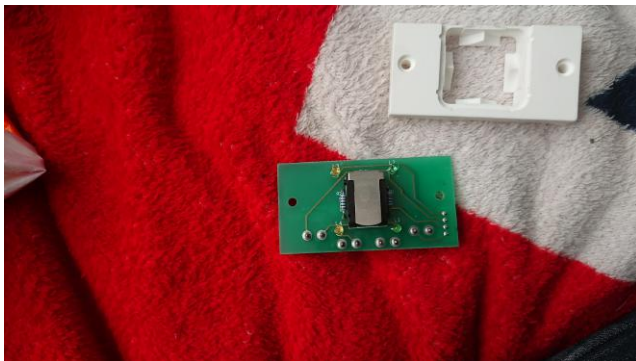
Me and Ben found a climbing frame in a shopping centre and climbed it when security was not looking. The bottom of it is supported by a steel frame while the top does not really have any supports. The higher you climb to the top of the climbing frame the more the structure shakes.





# KONE M-SERIES KONEXION UNIT

I was lucky. I was with Ben looking for lifts to film/surf when we bumped into an engineer. The engineer was very friendly and worked for schindler and was modernising an Awesome Kone M Series. We was speaking to him for about 30 minutes while he was working in the car on some wiring for the new COP panel. He was shocked at the knowledge we had and we told him we acquired the knowledge from years and years of tampering. He was amazed. I told him that I also like collecting lift buttons and he said he had an old autodialer in his van which he kindly gave to me as it was going to end up in the bin anyway. Anyway below is an overstretched picture of the circuit board to the alarm button. As you can see it has 2 amber leds and 2 green leds.





# THE OTIS MURDERS!!!

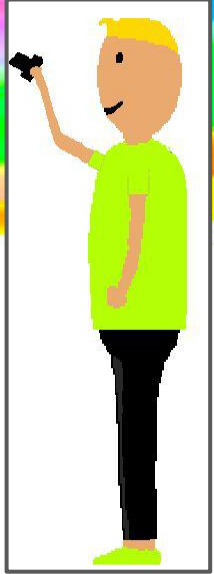
These were 80s otis lifts which have been forcefully pulled out of there shaft. The motor room has been completely smashed off the top of the building and the tracks have all been bent and forcefully removed at the bottom of the shaft. As you can see when looking up the shaft you can just see the sky. We need to stop innocent 80s otis's from being murdered and we cannot do that without your help. If you see any old otises getting murdered you should text someone and tell em what there doing. We don't want to lose anymore old otis's do we? So next time you see someone doing anything to an 80s otis that murders it you will text someone.



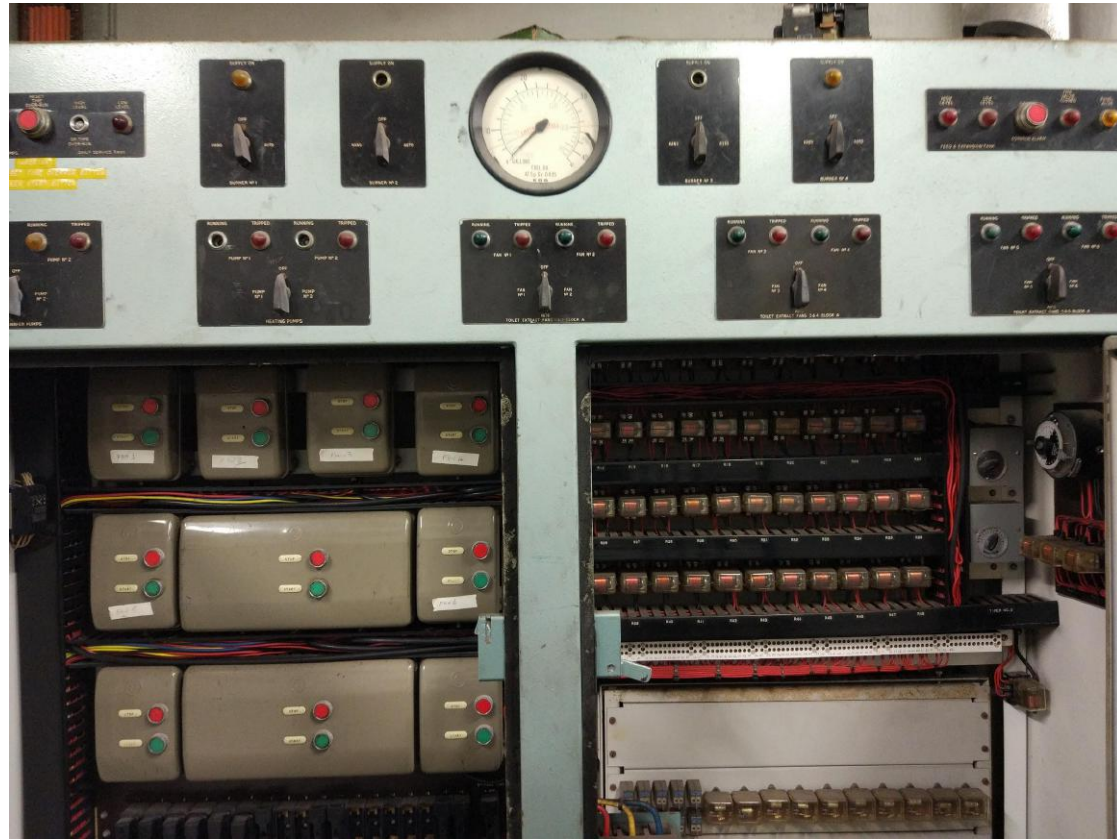


# BEN'S PAGES

## TRELICK TOWER BOILER ROOM

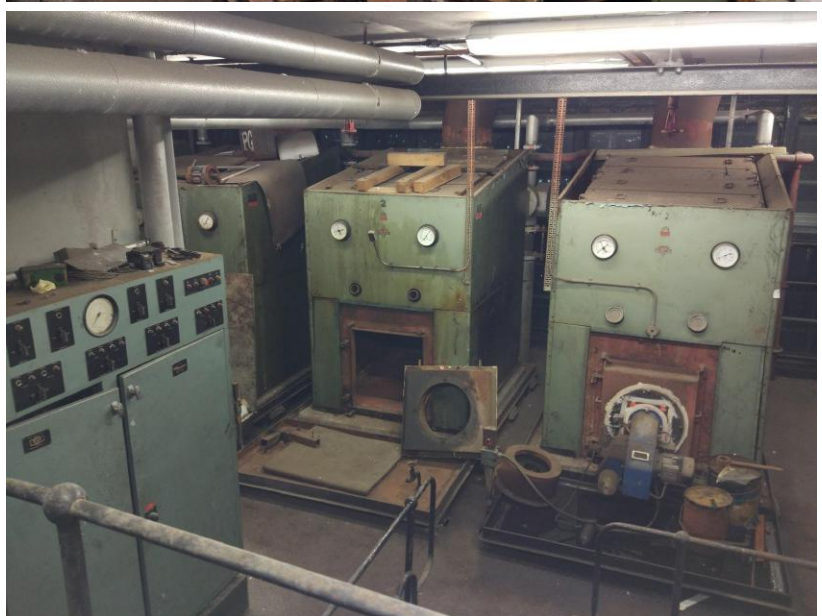


When exploring Trellick Tower I was amazed to find a completely untouched boiler room from when the tower was built. Original boiler rooms are even rarer than old lifts and there is nowhere that preserves this sort of old equipment due to its size.





This boiler room is completely epic. It is so nice to walk around all this old equipment. Modern day equipment is just not the same. The entire look to this place is amazing with the very old industrial staircases.







Very old fire alarms in Trellick tower

Trellick tower motor room. Sadly everything has been replaced, but the room itself looks nice and old.



Rare Page Signals mellor with fibre optic arrow.

The arrow is actually lit in the picture but it is very faint.

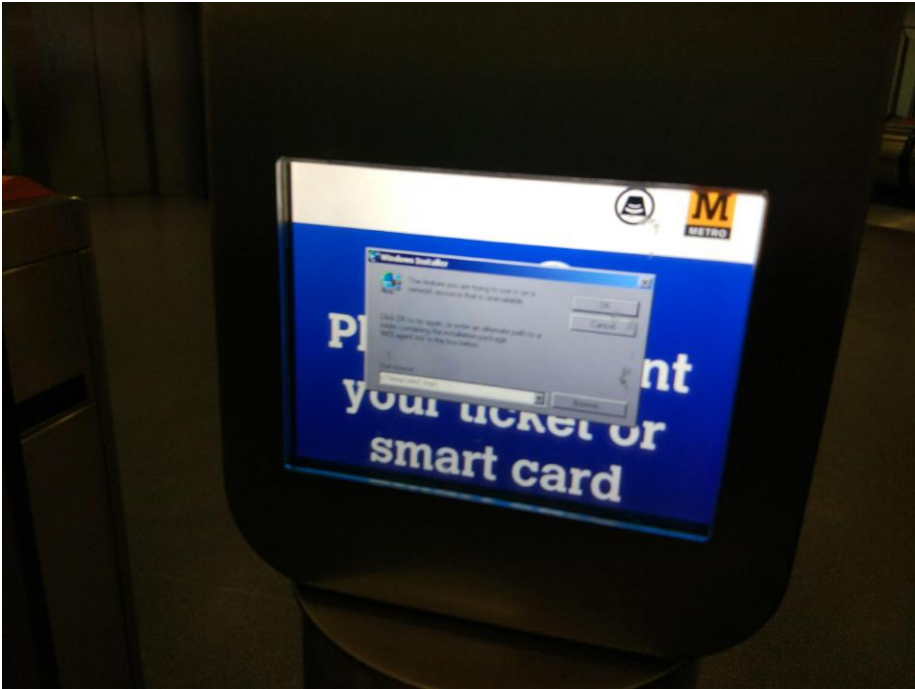






Some very creepy old lights  
above a plant room door in a  
backstreet in Newcastle

The ticket barriers on the Tyne and Wear metro run windows embedded. We noticed that one had a dialog on screen. What a stupid choice. This sort of system should run a very stripped down version of linux that just does the required functionality. Windows embedded is rubbish for this, it will use more processing power and is prone to dialogs opening that get in the way.



This is not a ticket machine, but just the screen on a ticket barrier. Whoever thought that this needed windows embedded needs to be sacked.



Mr Crucifix has decided that he now  
also likes saying hello to police cars



# BEST COMMENTS OF THE MONTH

I am now doing a page of the best comments I get every month. This is because without my subscribers there would be no point in making youtube videos.



**dykodesigns2yt** 1 week ago

Amazing! You guys have the skill of Mission Impossible agents. I just imagine the boiler room with the music from that classic 60's spy series for added atmosphere. That boiler room would make a nice setpiece for spy movies. Those old boilers also have a lot of Bakelite switches, that's a material you don't really see anymore. My uncle collects old electrical outlets and switches and many of them are made from Bakelite.

Reply · 4 · 👍 🗨️ ❤️



**deco floyd** 4 days ago

Ben ive been glued into your lift videos for the last few nights, great job and you have me wanting to be on a lift with you when surfing!! Can you do Broadwater Farm in Tottenham, north London? the uk government want to pull the place down. i used to live in the area and had many friends that lived in the estate. there was lots of 70's lifts there that where badly modernised in the 90's for you to hate on, it would be great watching!!

Reply · 1 · 👍 🗨️ ❤️



**qwertyFUBAR** 1 week ago (edited)

I like you for 'trespassing' and doing other things. Your presence in spooky places is a benign presence, leaving behind no trails and doing nothing more than turning on lights to chase darkness from corners for awhile. If I were a ghost haunting these places your visit would be the bright spot in my eternal torment and I'd recall fondly the few moments when the nice intelligent voices of you and your friends passed through my space, like small inquisitive animals observant and appreciative of every little corner. What a welcome change from the ugly and depressing humans that slog though my spaces day after day, some only looking for a spot to piss. People who piss in elevators are the worst. There should be upward looking cameras so their Johnsons and Janedoes could be paraded on the Internet.

Reply · 👍 🗨️ ❤️



**Edmund Fisher** 1 day ago

Woo, I've surfed the same lifts that Beno has surfed! You should have gone to the House of Fraser, they have an amazing rooftop view. I don't know how Ally got caught on the transporter bridge, I've been on it a few times before and stayed there to watch the sunset and never got caught.

Reply · 1 · 👍 🗨️ ❤️

Maybe Ally Law was being very loud



**Knuckles the Echidna** 1 week ago

Nice video you guys are awesome!

Reply · 1 · 👍 🗨️ ❤️



**tesco 4 dollar actor** 25 minutes ago

Comments:  
15% normal comments  
85% Allegro Master doing random shit

Reply · 👍 🗨️ ❤️

100% accurate!



**Will Marsden** 2 days ago

This kind of behaviour causes the system to send Agents after you man, be careful aye.

Reply · 👍 🗨️ ❤️

HaHa!



**Allegro Master** 1 day ago

FIRST'S GOT TALENT

Reply · 👍 🗨️ ❤️



**Allegro Master** 1 day ago

SEONG JIN CHO

Reply · 👍 🗨️ ❤️



**Allegro Master** 1 day ago (edited)

KIM KAP SOO

Reply · 👍 🗨️ ❤️



**Allegro Master** 1 day ago

JAY RUIZ!!!!!!

Reply · 👍 🗨️ ❤️



**Allegro Master** 1 day ago

MARK BONGAT!!!!!!

Reply · 👍 🗨️ ❤️



**Allegro Master** 1 day ago

JP SORIANO!!!!!!!!!!

Reply · 👍 🗨️ ❤️



**Allegro Master** 1 day ago

MICAELA PAPA!!!!!!

Reply · 👍 🗨️ ❤️



**Allegro Master** 1 day ago

ATOM ARAULLO!!!!!!

Reply · 👍 🗨️ ❤️



**Allegro Master** 1 day ago (edited)

TED FAIL00000000NNNNNN!!!!!!

Reply · 👍 🗨️ ❤️

Fucking hell!

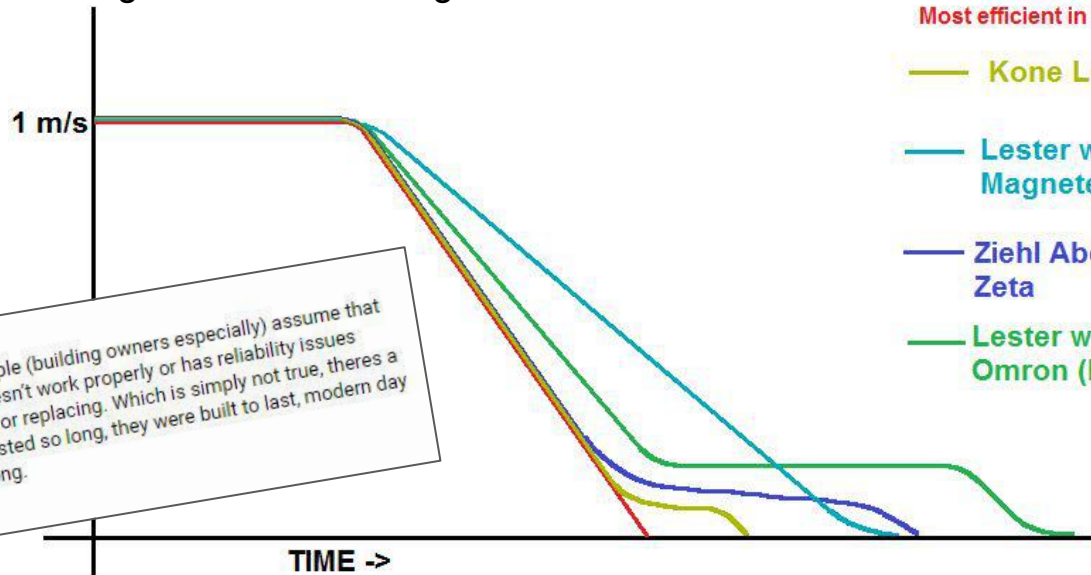


# NOTHING CAN BEAT AN M SERIES

The Schindler M series is the most efficient lift logic ever made. There are no modern day logics that are better than it. There is no reason to ever replace this logic with a new one as the new one will never be as good. Schindler still make a version of their logic today called the Schindler 7000 but sadly it is only for high rise buildings. The problem is that lift companies often replace M series logic with other not so good logics when modernizing the lift. This is disgusting and really pisses me off. A new logic is NOT a better logic.

I made a video on this and I got some interesting comments.

- Schindler M series  
Most efficient in the world
- Kone LCE
- Lester with Magnetek
- Ziehl Abegg Zeta
- Lester with Omron (blind VF)



**luke durrant** 6 days ago  
The problem is that many people (building owners especially) assume that because a lift is old that it doesn't work properly or has reliability issues therefore needs modernising or replacing. Which is simply not true, theres a reason many old lifts have lasted so long, they were built to last, modern day lifts aren't built to last that long.

**dykodesigns2yt** 1 week ago  
I wonder if Schindler's M-series logic is still covered by patents. All these big companies like Kone, Otis, Schindler innovate a lot and have big R&D budgets but also a lot of patents. It's not uncommon that big companies have mutual license agreements on using each other's tech. Although I've read somewhere that Otis once sued Schindler for copying their gen2 belt drive design. They settled it and formed some mutual license agreement so that they can use each others tech, a bit like a gentlemen's agreement. I reckon that Lester controls may not have the money to license this sort of proprietary technology even if they have the technical means of copying it, they can't market it due to patents. And of course the design engineers may be bound by non-disclosure agreements even though companies try to lure each others top employees like in the semi conductor industry.

**BENO** 1 day ago  
It is very unlikely that shaft bar and tacho is covered by a patent. It is a very standard system. Schindler have just perfected it. One thing that Schindler does that no other lift company would ever do is to have overrun tolerance. M series and Eurolift are not scared to overrun the floor slightly and immediately move back to it before applying the brake. It seems that all other lift companies seem would never dream of doing this and have lifts approach the floor very slowly for the last bit to make sure it doesn't go past it.

**dykodesigns2yt** 1 day ago  
I wonder what the average stop tolerance is for high-speed lifts (ones that go 4 m/s), just last night I was thinking about a shaft positioning system using a strip with holes at 10mm intervals with an optical encoder (like a rotary encoder in a old fashioned computer mouse with a trackball) and a counter that measures the distance to keep track of the position. I reasoned that a tolerance of +/- 5mm stopping distance should be nice. I sometimes have these philosophical daydream moments..... Schindler's approach seems very novel and quite logical. It would make it a lot easier to stop correctly even with high-speed lifts.

**morthren** 1 week ago  
It's just criminal that those M-Series have been modernised!! The cabs could have been tarted up but it seems the only goal of a second rate lift company is to screw the building owner for as much £££ they can get away with! This has really annoyed me!

**Love Lifts** 1 week ago  
Wow, very informative video there! I think the Kone mod is the best too. The last lifts you showed I think have been modernised the same way as the glass lift at the Maylord centre in Hereford, which was an 80's Otis, now ruined by Jacksons. It does start up painfully slowly but levels quickly which I don't really understand, then only a second or 2 later it opens its doors. Very interesting and great to know that Lester has got rid of their blind VF...! Great video Beno! Oh and Schindler M Series logic is amazing!



# TYNE AND WEAR METRO



Unlike Manchester Trams which are getting more and more dull every time I visit, Newcastle metro is still very interesting and fun to go on.

This metro is a very interesting system. It has a very different feel to it from all the other metros in the UK



The trains are still original from when the system opened in the 1970s. The trains have DC motors with resistor starter.





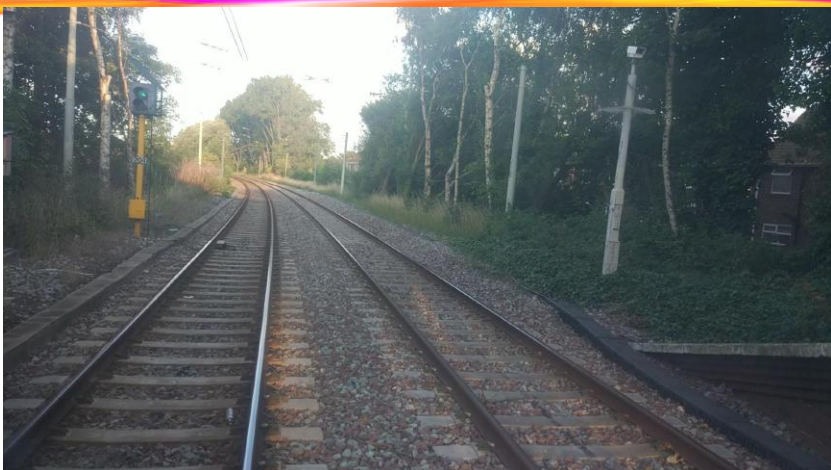
One of the best parts about this metro is that the drivers cab only takes up part of the front of the train and passengers can also sit at the front.

One part of the route goes on the mainline. This is very different from most metros which are completely separate. Apparently this metro was based on Karlsruhe in Germany.

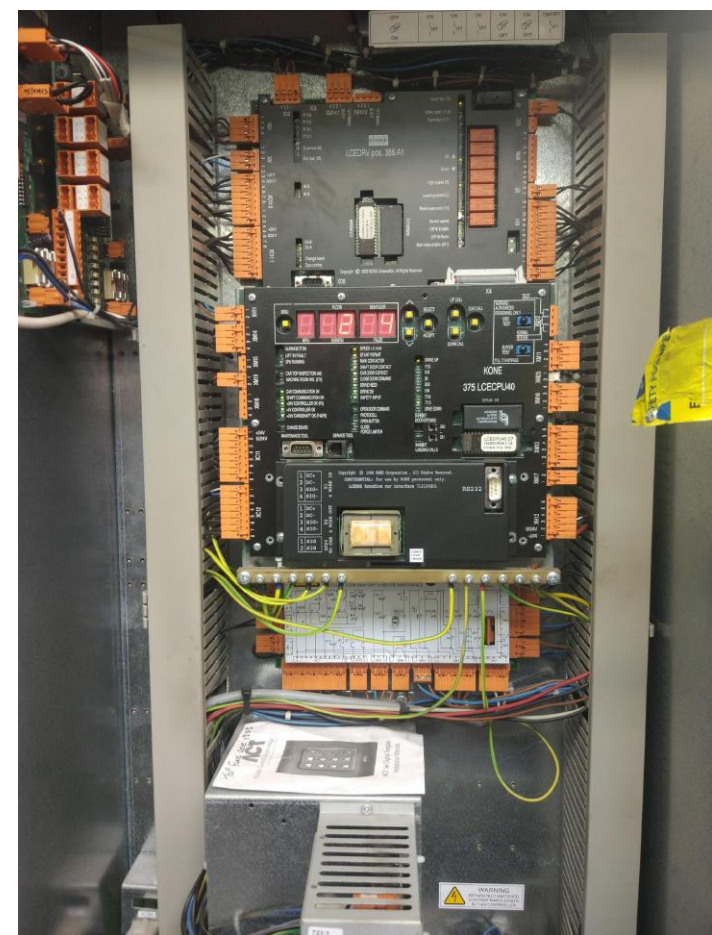


There are so many different views and parts that all look very different on this metro system. It makes it very interesting.





There are so many different scenes across the metro.

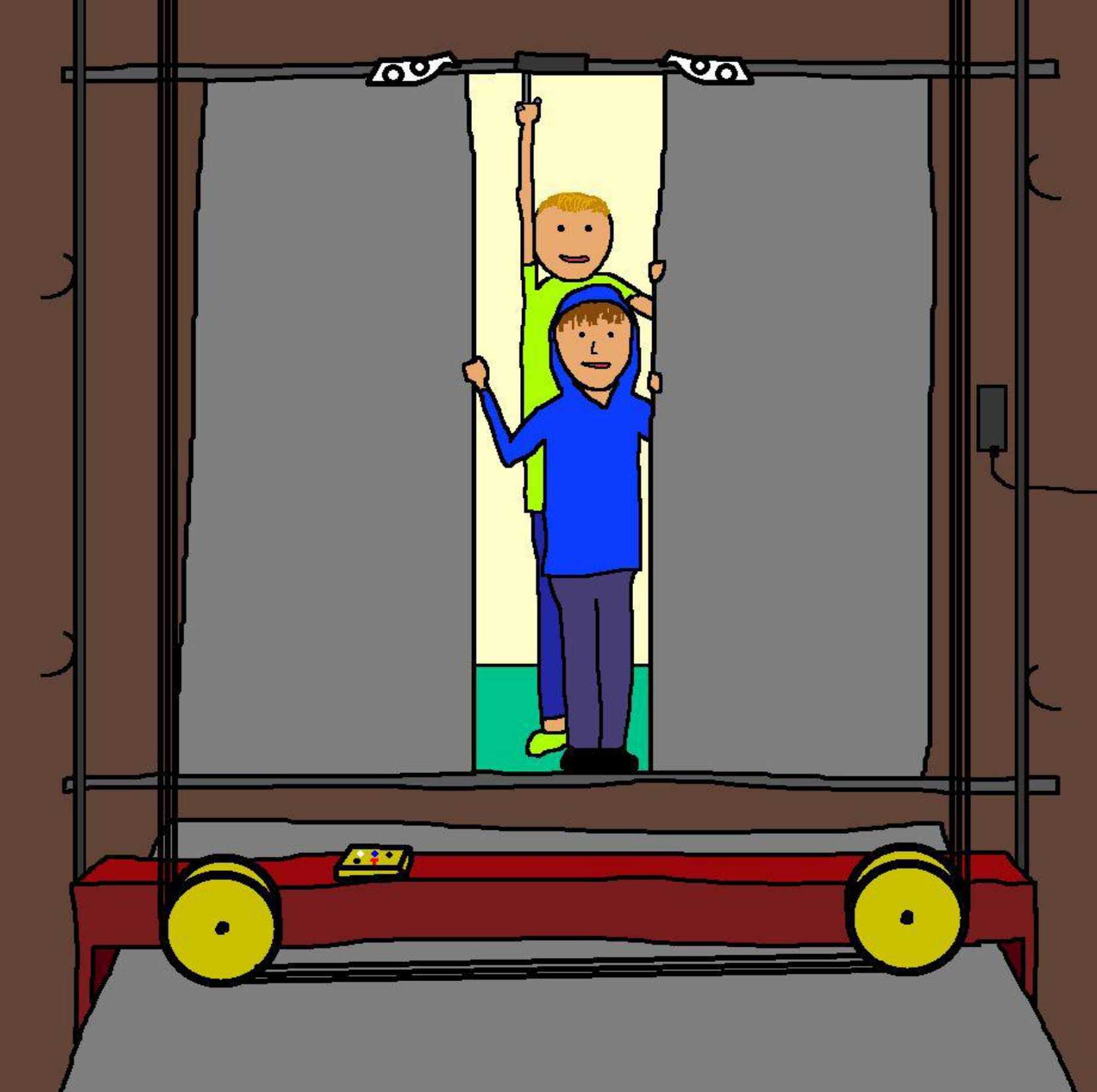


Here is an interesting Kone LCE mod of an old lift. This mod actually uses an Omron VF which is wired up to the LCE. This is a blind VF system, but Kone has set it up very well and it doesn't spend ages levelling. This shows how bad Lester is.









**THE END**