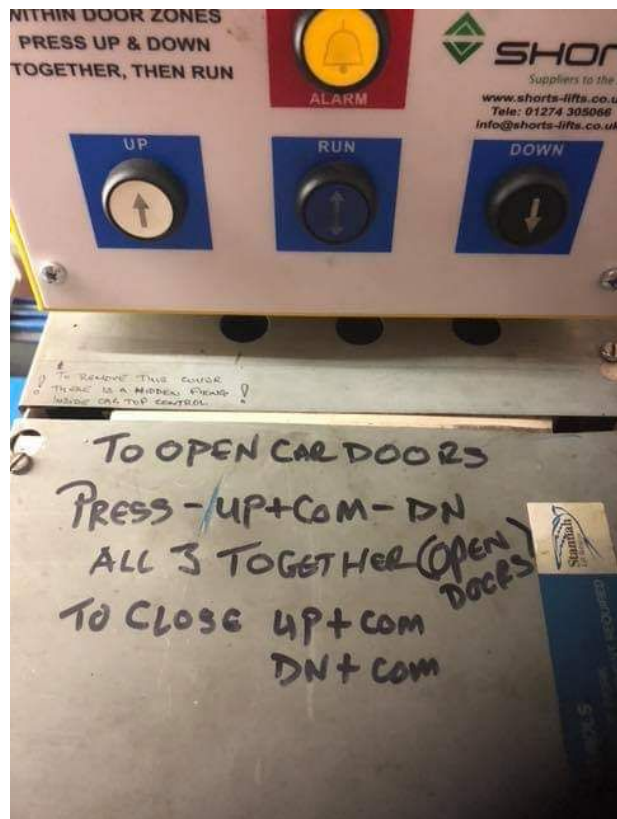


# Moo Cow Diarrhoea Tasting Club MAGAZINE! (JUNE 2019)



# SELECTION OF LIFT SURFING PHOTOS FROM OUR MEMBERS



Unusual writing on car top



What is in the lift pit today?



Epic old lift shaft



Here is what real quality looks like.  
Epic Mitsubishi.

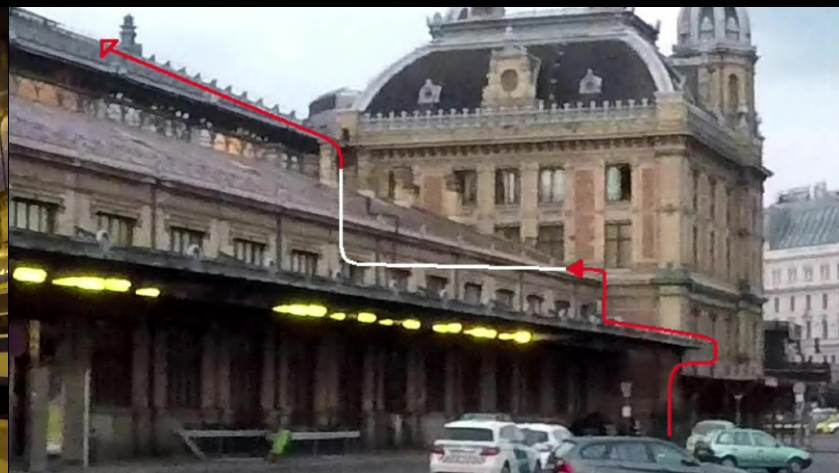


Lift used as bag services

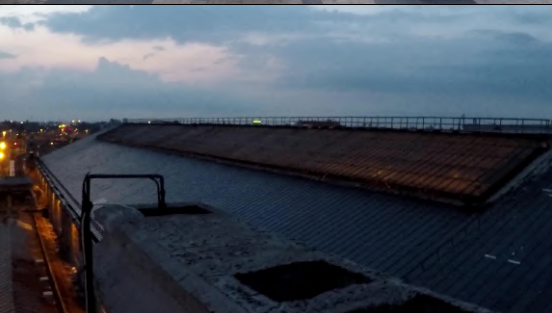


# URBEX LIFTS

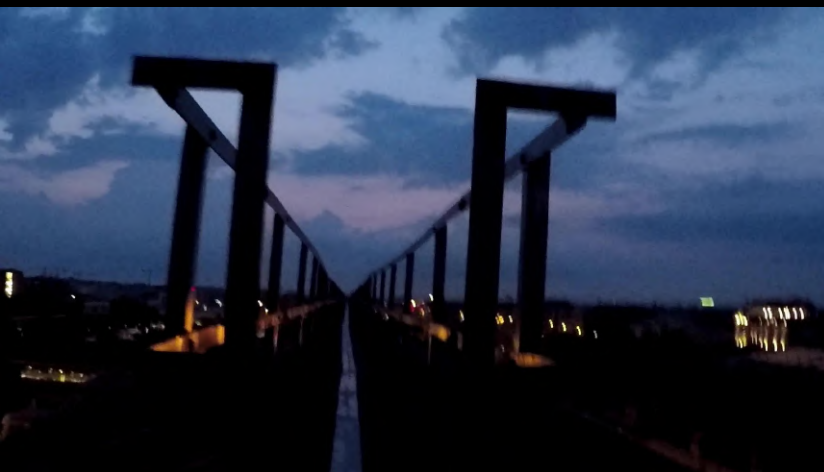
## 4 AM Railway Station Roof Climb



I went there late at night and I realised that this place is always busy so my only option was to go early in the morning when there are just a few persons staring at you



This is literally the best time of the day: everyone is completely tired and no one really gives a shit about you doing unexpected things

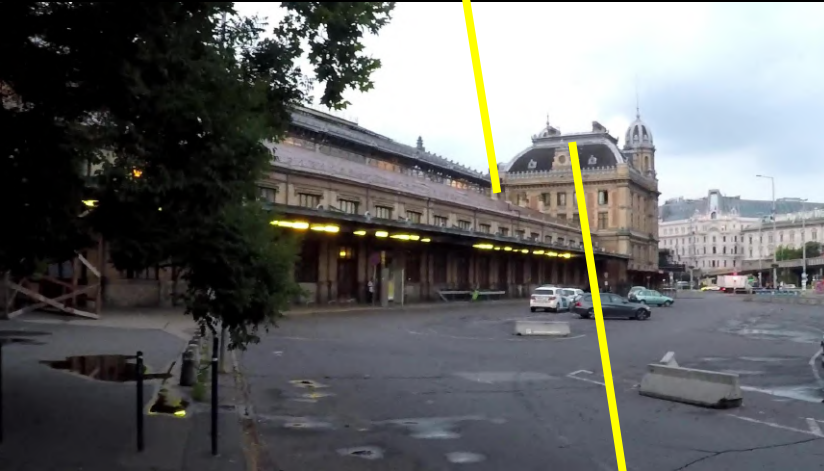




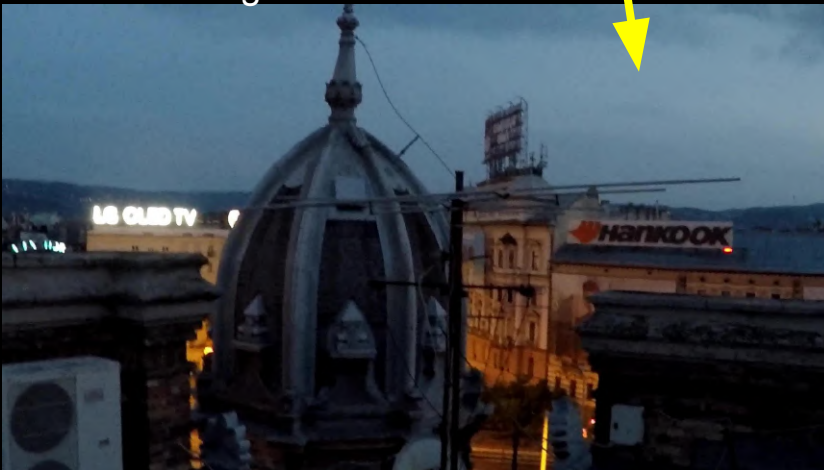
# URBEXLIFTS Railway Station Roof



Air conditioning units are the best to climb!



And I managed to climb one of the towers



This roof is a perfect trainspotting place





Isn't that nice of them giving such a luxury seat on the back of their trains for anyone who got late



And of course, the best thing is that you can now finally count sleepers! (if you can keep up with the speed or alternatively you can wire up your own inspection control)

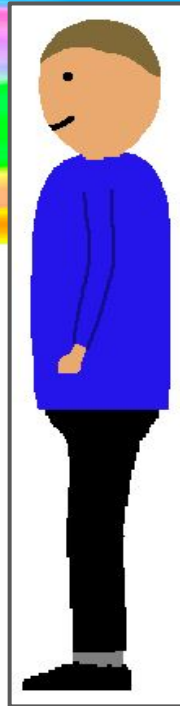


Getting spotted time! Do you think a police car is faster than this train?





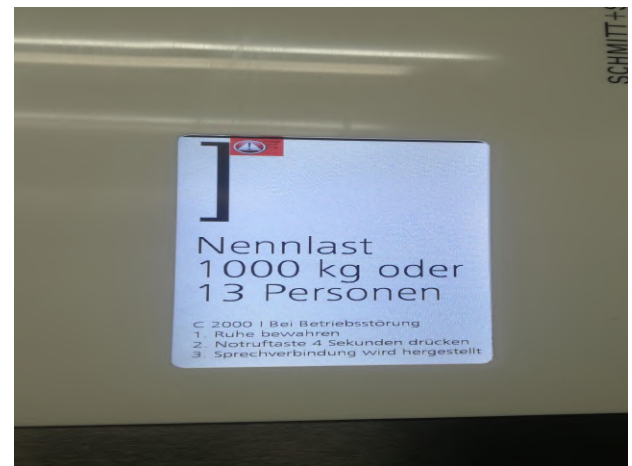
# FAILS IN GERMANY'S PAGE



As always, i visited loads of motor rooms this month!

Newlift logic, nothing interesting, but as usual the engineers didn't have a clue what they were doing. This lift now pre-doors and levels intelligently. Making a generic with NewLift logic intelligent is actually really easy if it is fully shaft encoded, but the engineers are dumb. Sadly on this older Newlift logic you can not enable pre-start.

Floor J! Of course we can not let a month go by without reprogramming a lift! This time i just Changed some indicator settings on a Schmitt&Sohn lift. Of course i changed it back afterwards. I just did it to prove that they can't stop Me getting into the settings of their rebranded logic.



The most risky motor rooms are always the best motor rooms. Even tho this actually is very risky. German people are idiots who always get involved.

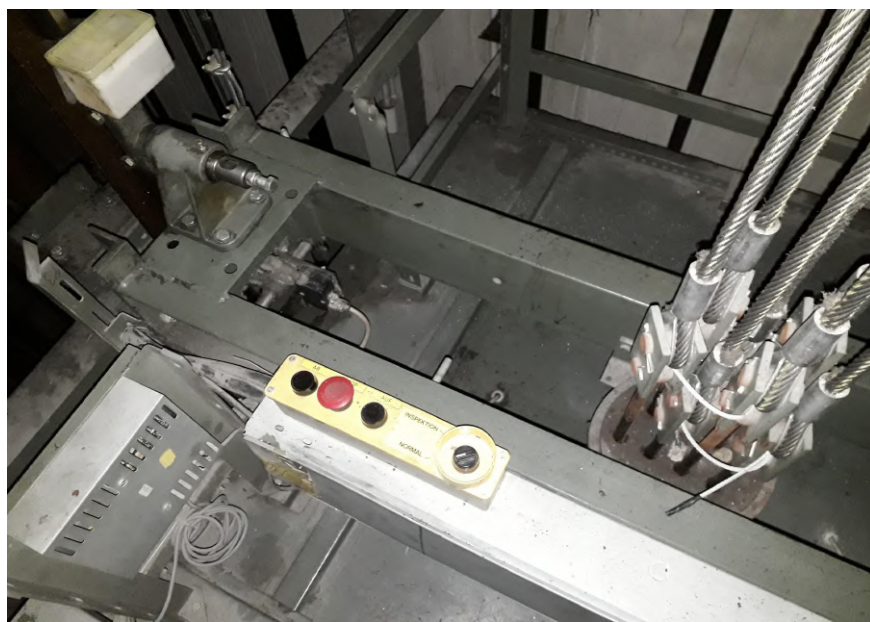


# TecStuff Lifts Pages

## Epic 3m/s Schindler M-Series lifts in a posh office building



This building has 12 lifts in total most are M-Series from 1991 but a few had been modernized to Eurolifts. Here the mostly original service and main lifts.



LET'S SURF THEM!

Schindlers full intelligent positioning system



# TecStuff Lifts

Here some random lift motor room pictures.



Haushahn modernised  
by Schindler



1991 Schmersal lifts with PLC logic



1992 Tepper motor  
room with  
Schmitt&Sohn service



# TecStuff Lifts

## Lifts at Galeria Kaufhof shopping centre in Düsseldorf



The 4 main lifts  
sadly only 2 are still working

and 2 Paternosters



Inside one of the main lifts



Thyssen modernised  
by generic in the car park



Schäfer call button for the  
main lifts



# TecStuff Lifts

## 1973 Osma lift

Single speed with very simple relay logic



Low power Call and floor board. This lift uses floor plates in the shaft, to know its position





# TecStuff Lifts

Here some random lift shaft pictures



1st generation Ecodisc inspection controls



Osma lift cartop



1992 Tepper lift shaft



Cheap Otis gen2



# ADAPT MOTION

## Summary

This month was rather boring in terms of lift surfing etc. There were only 2 times where I was going to see lifts and both of those times I was near Düsseldorf!

I met someone from the Moo Cow group there and we had a great time!

And I now have a brand new phone, the Mi9T. Everything is good except the sound quality its a bit dull but for the price everything else is amazingly good!

I am also doing my EU drivers licence A1 (Motorbike)

## Sample Photos from my new phone





# ADAPT MOTION



That went well



New  
Variable PSU

Old Tram in Düsseldorf

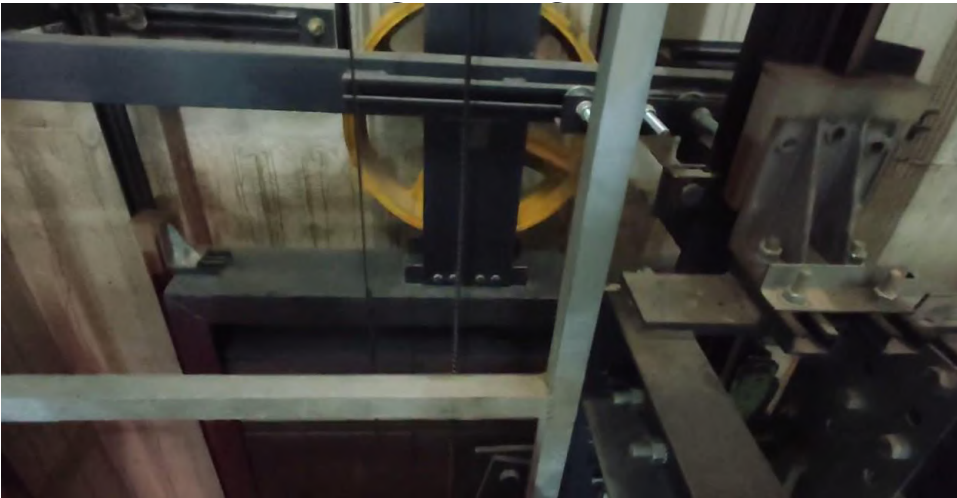
Düsseldorf Central Station.  
Wide Lens view!



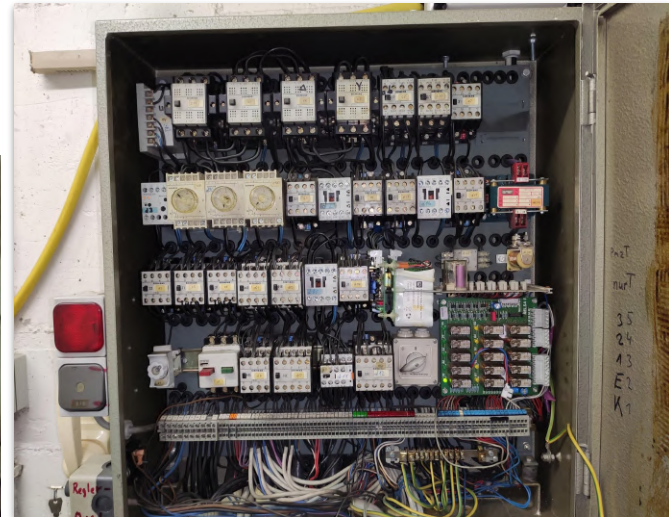


# ADAPT MOTION

## Now lets move on with some



Wobbly counterweight on a Koneric



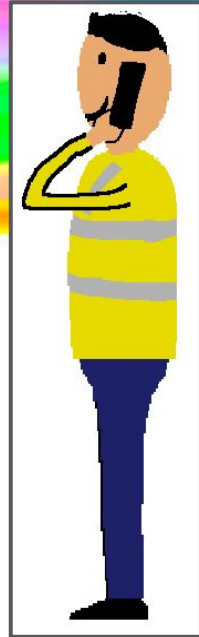
Old Relay Tepper with modernized call board

In case of fire ~~don't~~ use the lift





# JORDAN'S PAGE



Here I have an otis lift which I have not managed to get into. I was walking past buildings on the highstreet in DADADA and then I noticed through a window that there was an otis lift. It annoyed me because I could not gain entry into this building. I would have had more chance if it was not 1am so I need to return to this building sometime in the future when it is day time. Although the place its located is not worth dedicating time. So I will only try again if I am passing through the area for whatever reason.

## MR NIBBLESON STEALS DRAIN COVERS

There once was a man called Mr Nibbleson. He was a stereotypical chav. He enjoyed driving a chavy car with tinted windows. Decat loud exhaust. Lowered coils which have been cut in a dodgy manner where the springs could pop off at any moment. He enjoyed running old ladys over as it gave him peace of mind while blaring out loud sounds from his speaker system. He often dumped the bodies into the river as he run the old ladies over at 2am in a village where nothing ever happens. He got scared when it came on the BefaceNews that some young child aged 6 months old had found body parts washed up on the river bank. The 6 month old child recognised this body part as a spine as his father was a messed up serial killer. His father often let his 6 month old son watch to ensure he learned the lesson of "How to kill someone with Jeff in 10 easy steps?" 1. Pour bleach down their throats. 2. Get the hammer and chainsaw. 3. Cut them up into small bits so they don't take up too much space. 4. Put the dead body parts in a heat resistant bag and use the space launcher gun to launch their body parts into space. After a few years astronauts noticed they were flying past dead peoples body parts and decided to bring a selection of the down to earth. The body parts we identified as. Miss Jenson, Miss Willbert, Mrs Tygason, Mr Woolworths, Mr Jones, Mr Dr Hurbert hartley smithinsons and Mr one eight eight four two four six six. Mr Nibbleson go so stressed that his mind exploded internally and he drunk bleach.

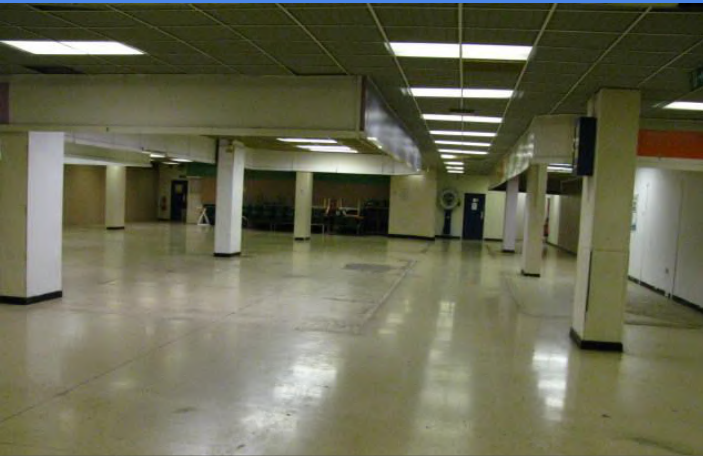


# The Trafalgar Centre - Reimagined

The Trafalgar Centre In Chatham is a small indoor shopping centre which was more a indoor market. This is a grotty place with very small shops. In 2013, only a third of the shops were occupied. The disused shops have had their temporary walls removed, and the central part of the center looked very empty and bare. In 2014 the Trafalgar Centre sadly closed down. The car park above it is still open, the car park is owned by NCP.



Photos from  
[beno.org.uk](http://beno.org.uk)



The deserted 'main' shopping area

Very Cheap Temporary Walls



Creepy

Loads of empty shop units

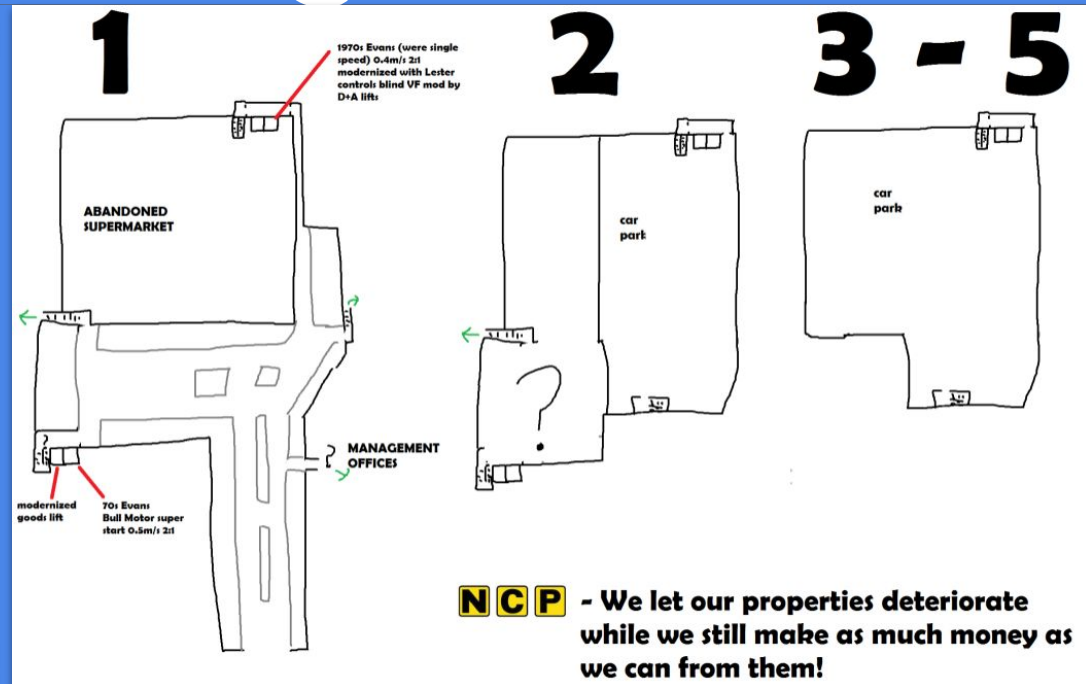
Very old design



# The Trafalgar Centre - Reimagined

I set myself the challenge of re-creating The Trafalgar Centre inside of a game called Scrap Mechanic. Ben helpfully created a floor plan to help alongside with old videos. I'm adding all the small details too, however some things will be different. Be sure to check in to next month's magazine for an update of the project.

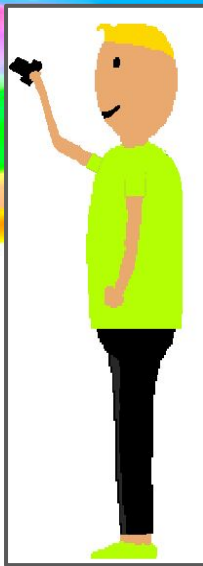
Here is a small teaser of the progress so far..



By MonkeyGaming



# BEN'S PAGES



EcoChair surfing. The best thing to do when you are bored and can't get to any lifts to surf!



This month I almost got run over by a funicular



I CUT KEYS!  
But sadly it only cuts the most obvious basic keys which nobody should be using in the first place. I tried my lift keys but it wasn't able to cut any of them!

Security trying to look impressive with a car that looks a bit like a police car, and has the words "dog unti" on the side of it.





# CRITICAL MASS JUNE 2019



This month I met It\_Croacked and surfed some lifts with him. His first ever lift surf was a 3 m/s Schindler. A very fast lift for someone new to lift surfing! Later on we went to Critical mass. It was eventful as usual. Everyone stopped and blocked up several busy road junctions, which annoyed loads of drivers.



# PRACTISING USING CLIMBING EQUIPMENT



This month I have been practising using my climbing equipment. I have a 60 meter dynamic rope, 2 1 meter static slings, abseiling device, 2 carabinas, and some extra rope which a use to make a prusik knot ascender. To get up a tree involves throwing the rope over the highest branch I can throw it to, then ascend it, then attach onto the branch with the sling, then re-throw the rope and do the same thing again until I get to the top.



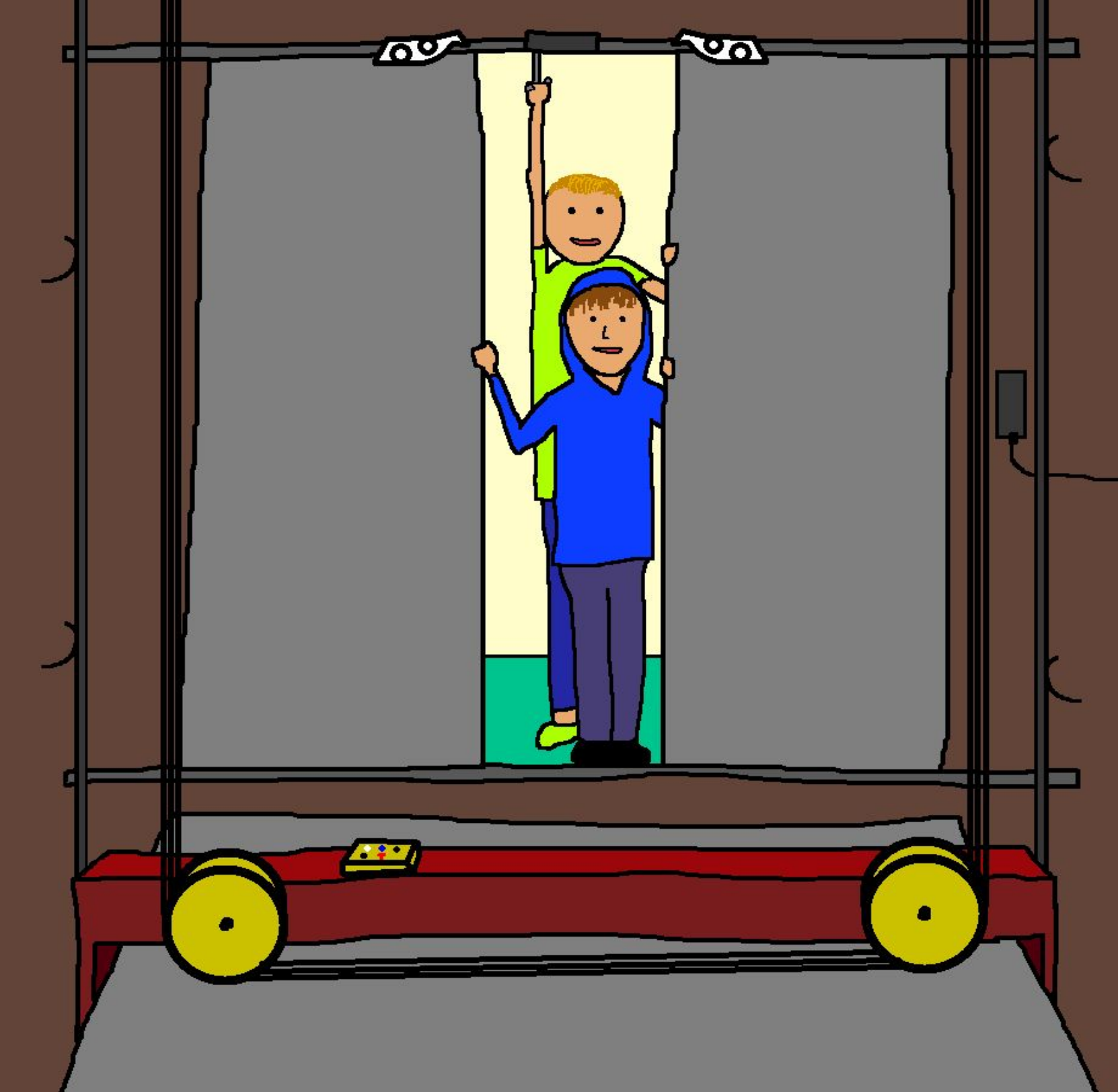












**THE END**