

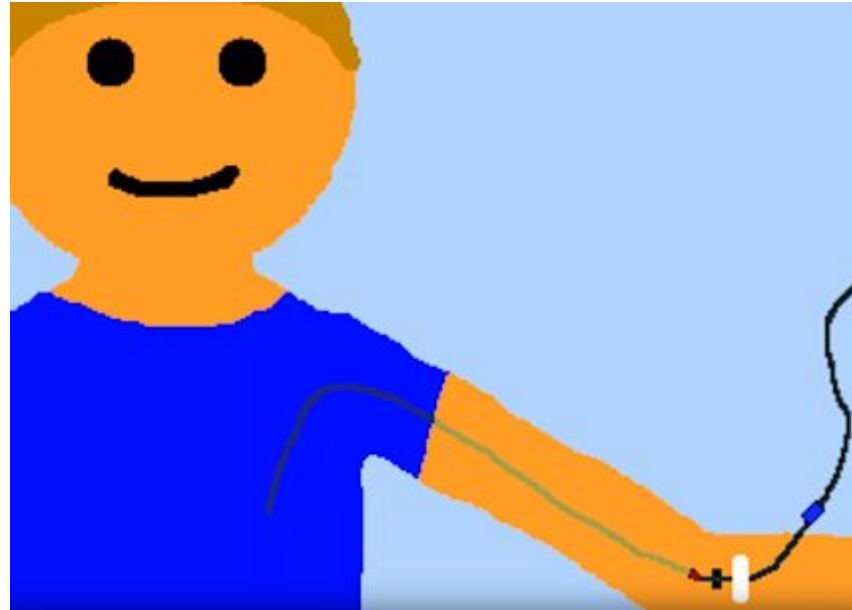
# Moo Cow Diarrhoea Tasting Club MAGAZINE! (JULY 2019)

# Challenge question of the week

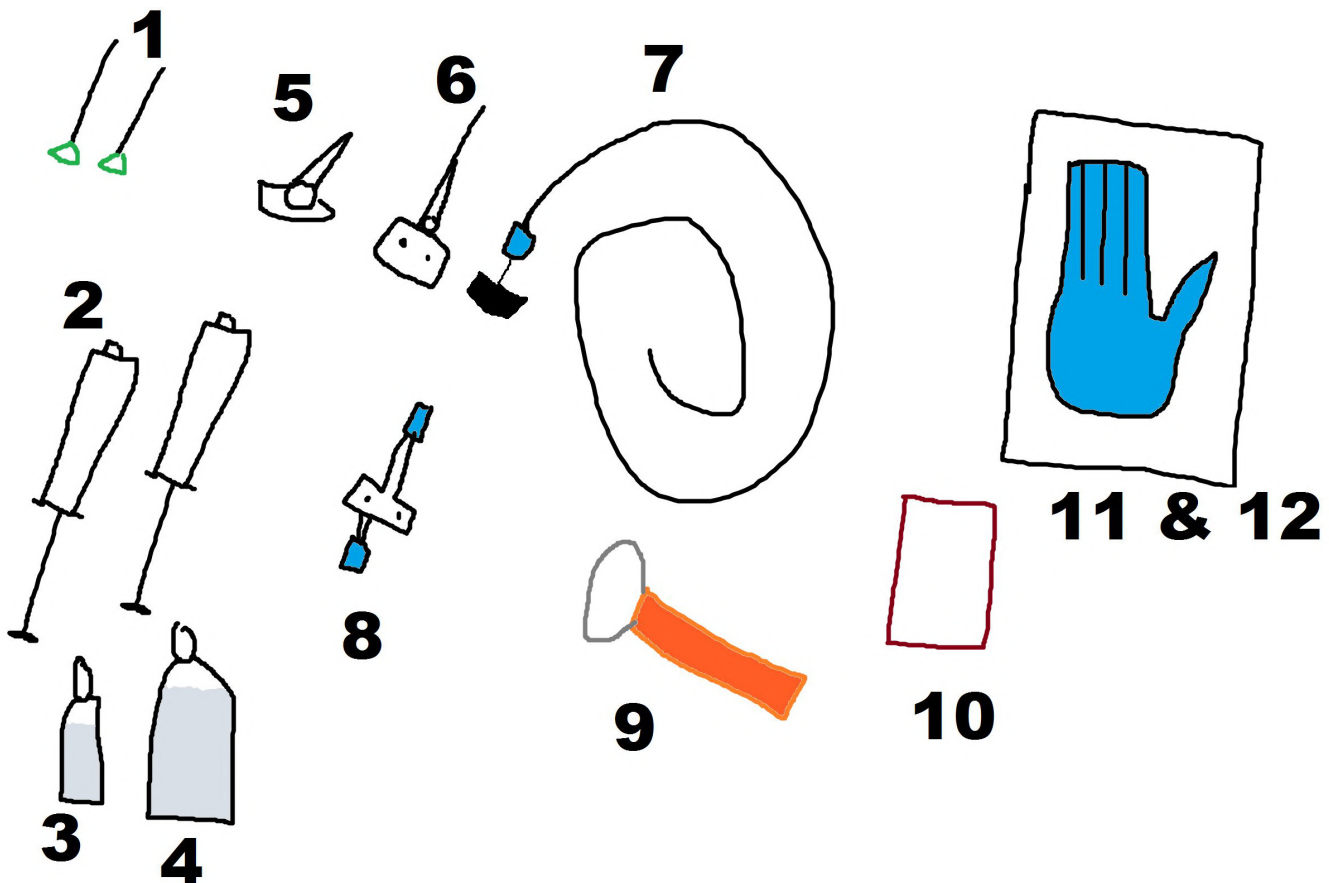
How to insert a 70 cm IV line from under the elbow so the line ends in a large vein that doesn't get irritated beyond the shoulder near the heart (for medium term IV usage)

Here is what you need, but how do you do it?

1. 2 filter needles
2. 2 syringes
3. Heparin in a bottle
4. 0.9% saline in a bottle (aka water that matches your blood PH)
5. Plastic needle
6. Big painful needle
7. 70 cm IV line. This contains a metal wire inside the IV line
8. IV extension
9. Brush with Alcohol in it
10. Extra alcohol wipes
11. Gloves
12. The packaging of the gloves doubles up as your sterile workspace



The answer will be revealed next week!





## How accurate is Wikipedia's page about lift surfing?

"Elevator surfing typically occurs in skyscrapers or on college campuses" - No idea where they got this from. It is most common in council estates, but it happens in any type of lift.

"Surfers can be crushed between the elevator and the top or sides of the elevator shaft" - You can't be crushed at the top unless possibly the lift overruns the top limit at full speed.

"participants will usually go into such a building early in the morning, before too many people arrive to use the elevators, or late at night, when most of the building's occupants have left" - Complete nonsense. There is no particular time in general. It would depend on the individual building. You scope out a building and work around the pros and cons of the building.

"if the key cannot be accessed, by lock picking" - Lock picking refers to tensioning a lock cylinder and moving the pins into place. Lift doors are not locked with a cylinder.

"A common misconception is that the emergency hatch in the roof of the elevator can be opened from inside of the elevator car. However, this is rarely the case, and these are, instead, designed for the use of emergency crews to rescue trapped passengers." - Rather misleading sentence. The hatch can be opened from the inside on fire lifts using a triangle key. Normal lifts often don't have a hatch.

"This activity typically takes place when there is not much movement with the elevators, which lowers the risk and involvement." - Not the slightest bit true. It depends on the building and the pros and cons of the individual lift. If you are wanting to relax on inspection then the less people the better. If you want full speed in a skyscraper then you need there to be people using the lift. If you do not want to safety break the lift or use inspection, so in other words, doing it unnoticed, then you need the building to be busy so if the lift goes to the top you don't have to wait long for someone to call it down. It is foolish to put it into inspection at the top if unverified.



# URBEXLIFTS

## ALL SCHINDLER M SERIES HOTEL



So today was meant to be just a bog standard boring day finding shit generic, modernised lifts and locked doors all over the place but this time I got lucky. I just came across the awesome hotel that Ben visited in his cheap flight adventure to Budapest. No one started questioning me on my whole exploration despite this hotel being ultra posh

Let's see the lifts!

The buttons on all public lifts have been replaced I guess because they kept breaking or just for the lift to look a bit more posh. I have seen quite a few broken buttons in the motor rooms



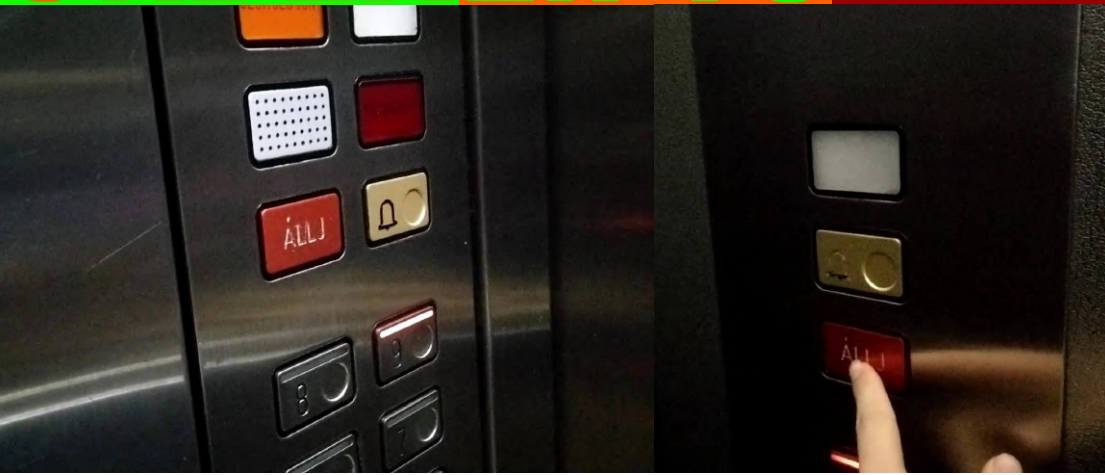
On the new panel, each button makes a different sound when you touch it. This allows you to practice piano while being super bored for the whole 20 seconds you spend in the lift. They kept original buttons and fixtures on all service lifts

I try to always check if there is a way back without opening a fire exit in front of security desk. Guess what: The first time I did forget about it was in this hotel right in front of security. I just decided to walk off completely ignoring him asking pointless utter shit



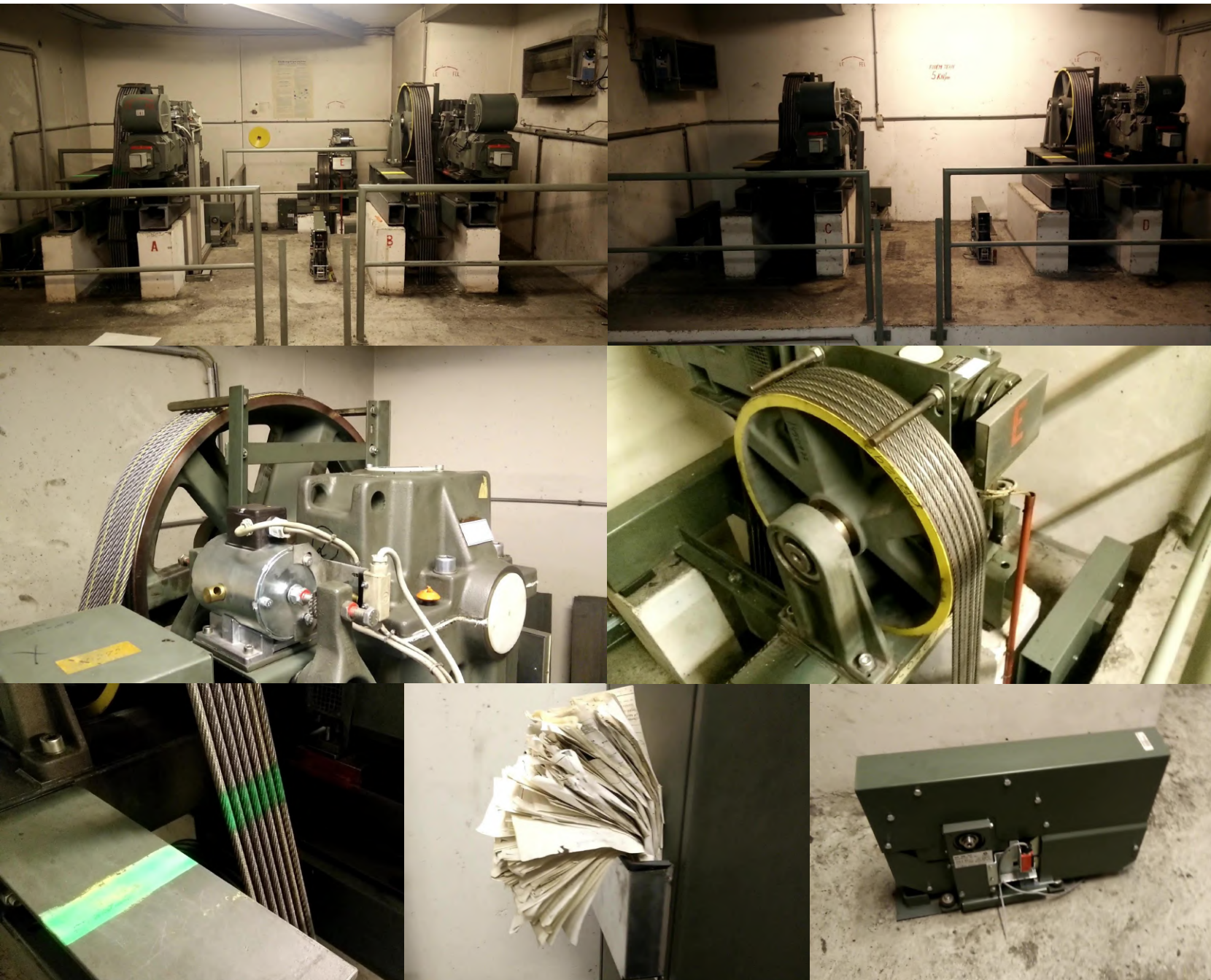


# URBEXLIFTS ALL M SERIES HOTEL



Stop buttons are very weird in this hotel. They just make the lift stop at the next floor and usually also opening the doors. This means you can override floor lockings. The only exception is the little hydraulic lift connecting the building to the car park.

Oh and a big thank you for leaving your motor rooms unlocked during my visit. I am very satisfied with the rooms, the only problem was the lift motor fan making a bad noise in the smaller motor room



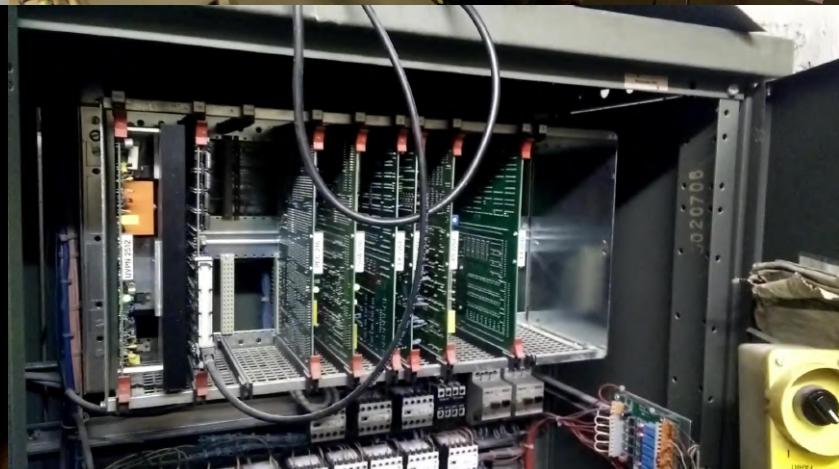
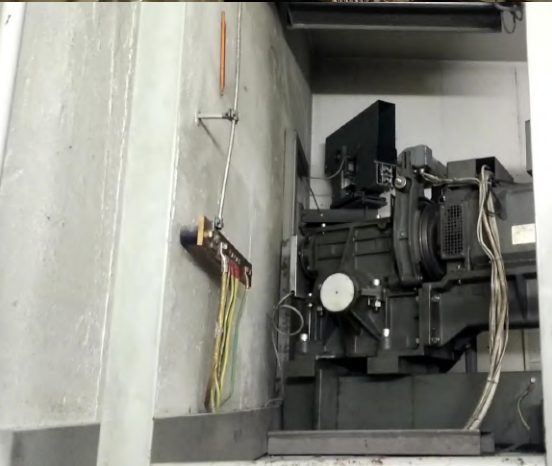
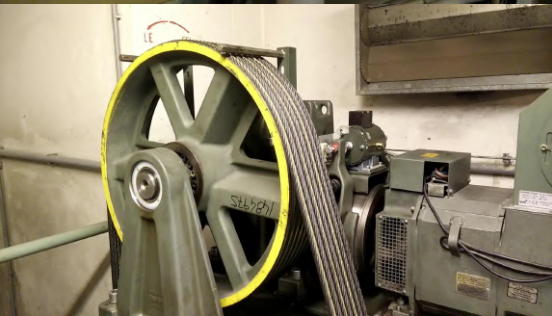


## OUT OF SERVICE

They will have to buy more of these signs if the lifts get modernized



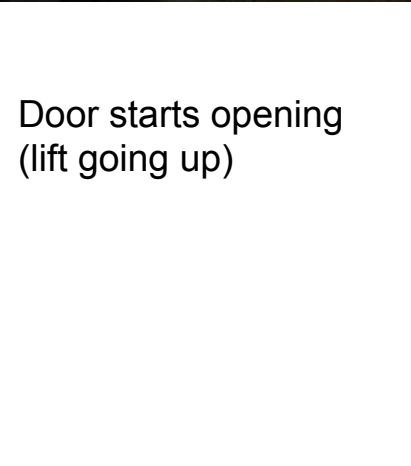
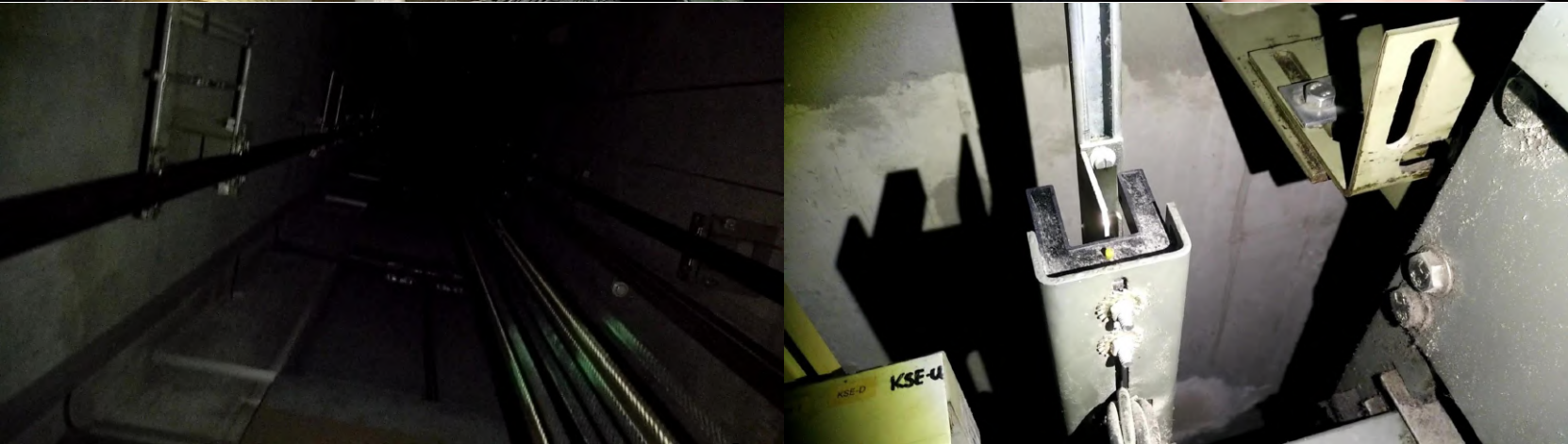
Random box in the motor room full of random stuff



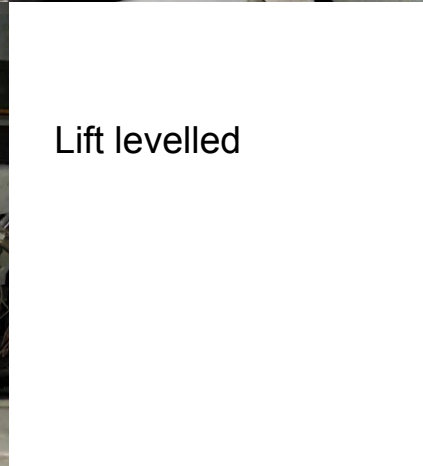
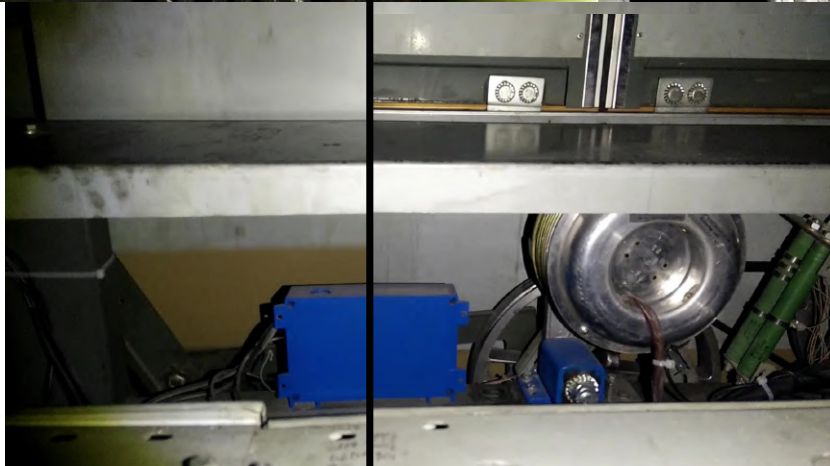


# URBEXLIFTS ALL M SERIES HOTEL

Let's surf the lifts!



Door starts opening  
(lift going up)



Lift levelled



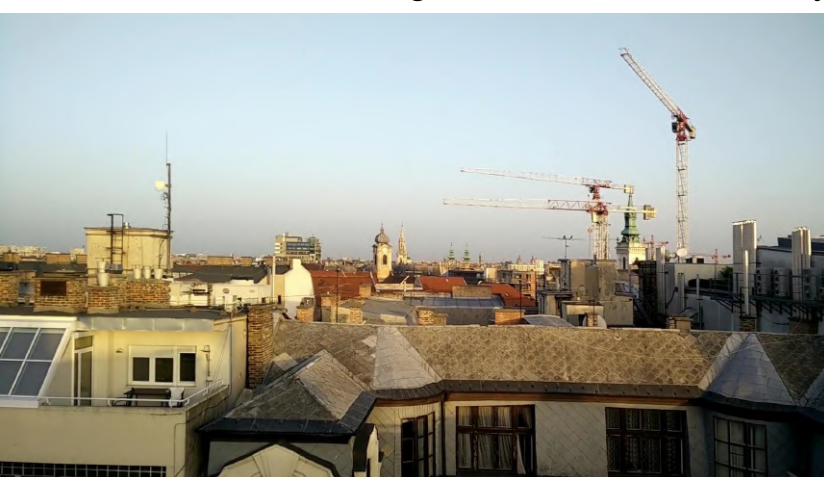




I don't know what to say about this picture



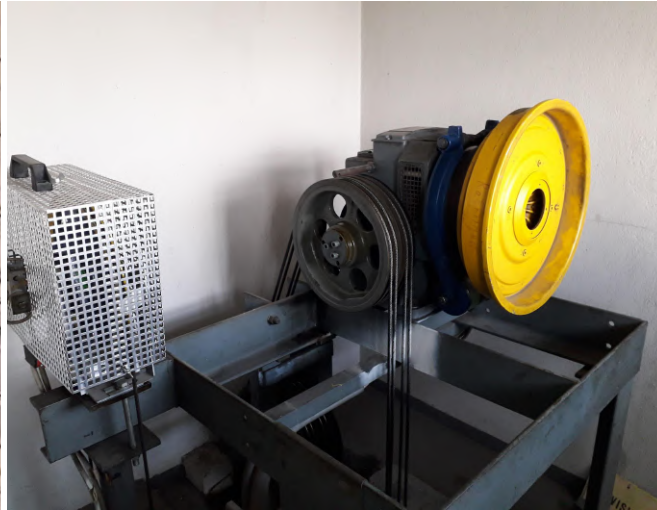
The last door I tried to get on the roof was finally a success



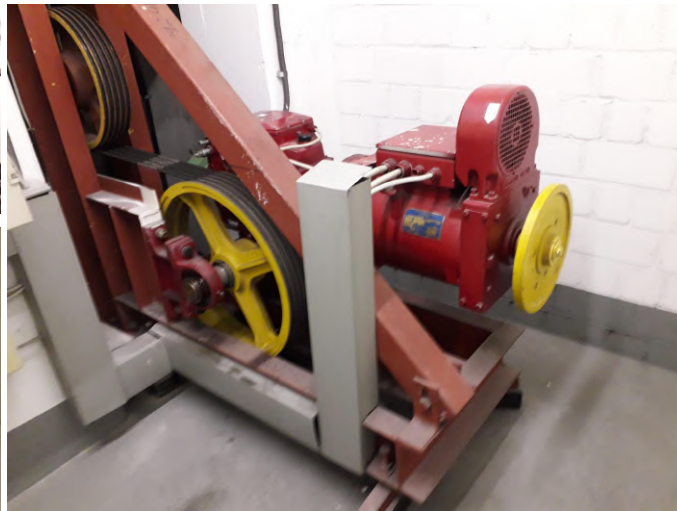


# Tecstuff Lifts

Random pictures of lift motors



2nd gen Ecodisc  
1975 Thyssen



Schindler 3300  
90s Generic



1963 Schindler  
Ziehl Abegg



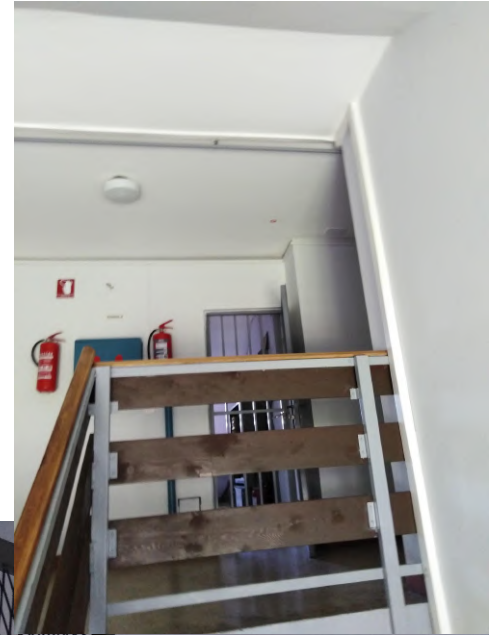


# Diamond Does Stuff

## Nice old Končar motor room!

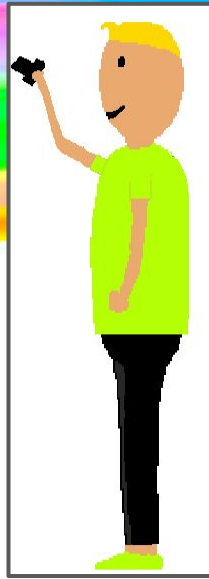
I was recently in an old building with a modded old Končar and noticed you could hear the relays really clearly even from the ground floor, so i went to the top and sure enough, the motor room was open! There was a locked gate but i could shove my phone through and record! The motor has been replaced but the old one is still there!

<https://www.youtube.com/watch?v=vNxFQOxKc-c&t=113s>





# BEN'S PAGES



Above: A classic Mitsubishi in a tall tower. Part of my surfable collection of lifts in London

Left: An amazing crane at a skyscraper in Bank. I want to climb it so much by it has a stupid injunction.

Below: The new Enviro 400 BYDs are now in service

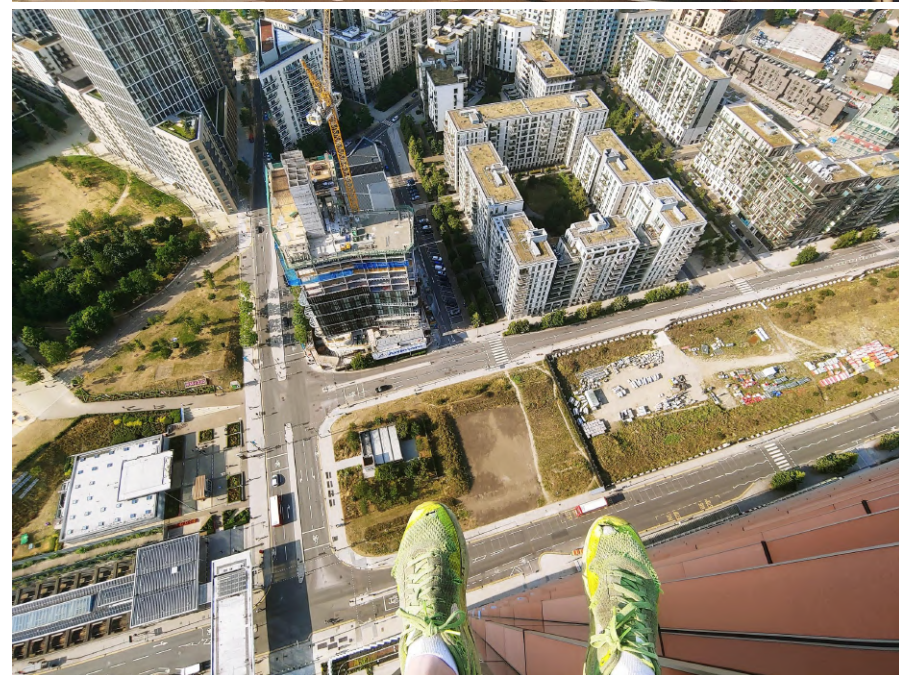




# MANHATTAN LOFT GARDENS



This 140 meter tower looks like it had a monster come and bite chunks out of it. It is a very interesting tower and we managed to get onto the roof!

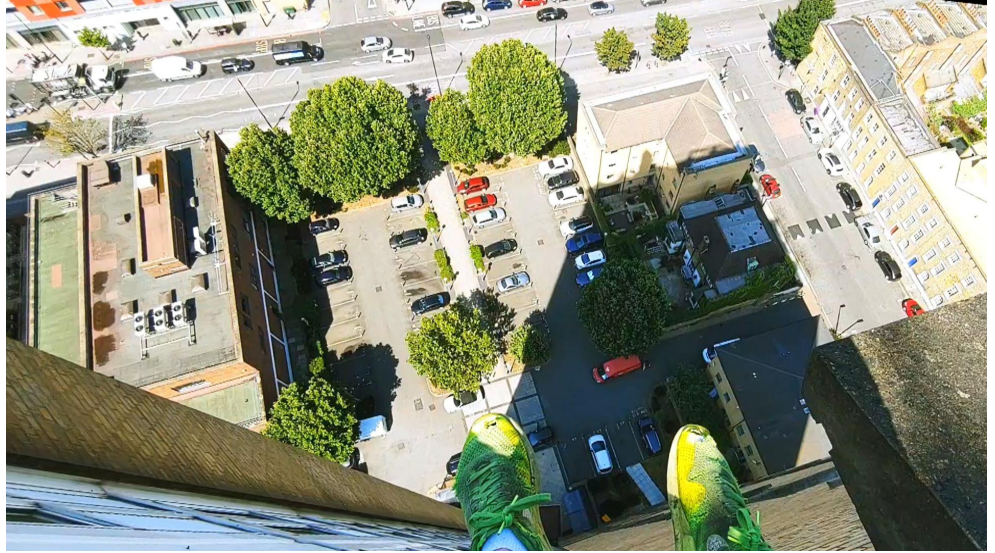




# WINTERTON HOUSE



Winterton house is a tower block that I have had not much luck getting into until now. It is a very interesting block and has an unusual structure on the roof.



It turns out that the building was heavily modernised in 1997 (which is why it doesn't look as old as it is). It used to look very different when it was built in 1968!





# WILL I EVER FIND AN ALDOUS AND CAMPBELL AGAIN

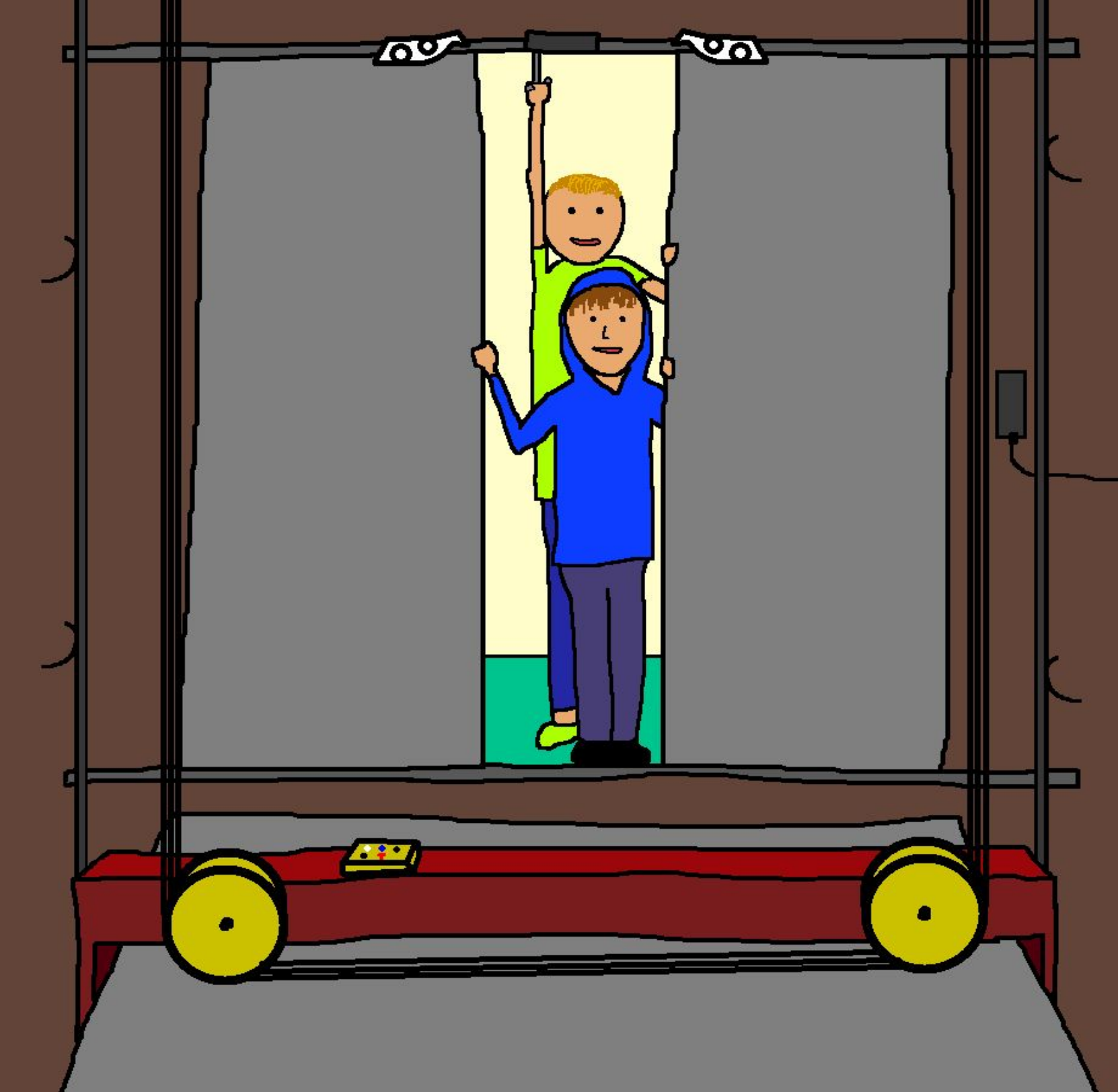
One of the best lift companies of all time. Aldous and Campbell made classic lifts. The last time I found a working one was before I started on youtube over 10 years ago. How can such an amazing company be lost to history.











**THE END**