

**Moo Cow Diarrhoea
Tasting Club MAGAZINE!
(OCTOBER 2019)**

URBEXLIFTS

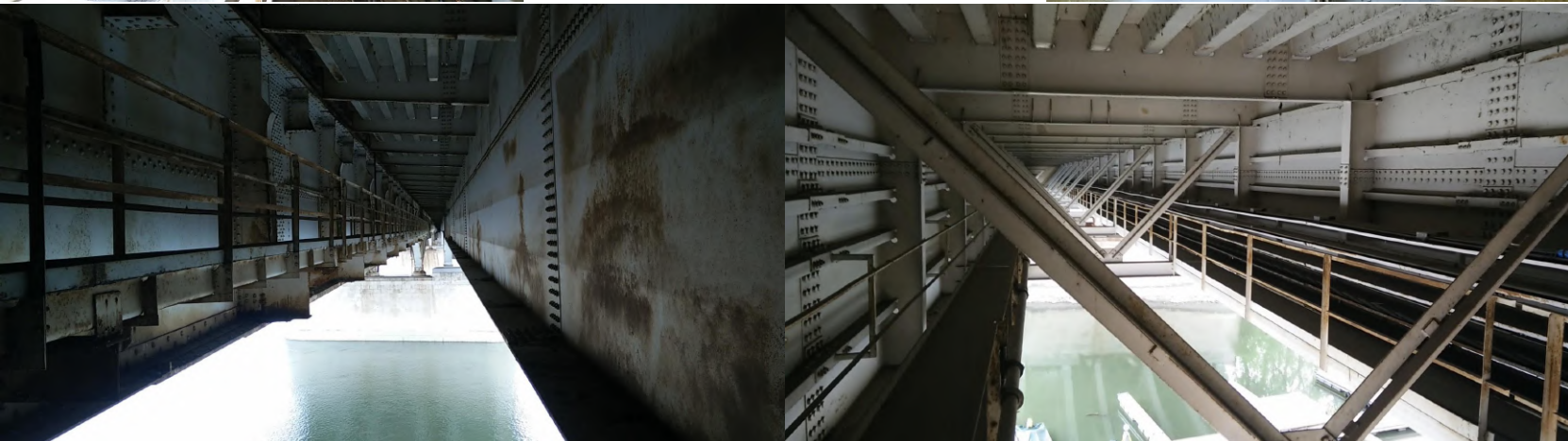
ÁRPÁD BRIDGE URBEX



I have finally managed to climb into another bridge in Budapest. This one looks really boring from the outside so I had to check inside and it was a quite surprise. It looks absolutely amazing! This bridge is connecting Margaret island to Pest and Buda, I have only managed to climb the part that is connecting the island to Buda but the other part looks basically the same



Here is the alarmed door that would lead to some offices and storage under the bridge on the island and then would continue to the other part of the bridge (Trust me, I have no clue how to bypass this alarm switch)



URBEXLIFTS ÁRPÁD BRIDGE URBEX

Here is the outside and the view from on top a pillar



There are 3 individual bridges one on one pillar, trams are running on the middle, the sides is for cars and pedestrians



The bridge in its full length on google earth looks like this



And here is a regular bog-standard floating toilet

URBEXLIFTS

First ever crane climb in Hungary - let's drive it!



As far as I know, I'm the first one to illegally climb a crane in Hungary for non-suicide reasons



There are loads of tall cranes on this site, the ones closer to almost finished buildings are very secured so I went to climb the least secured crane which was actually pretty tall



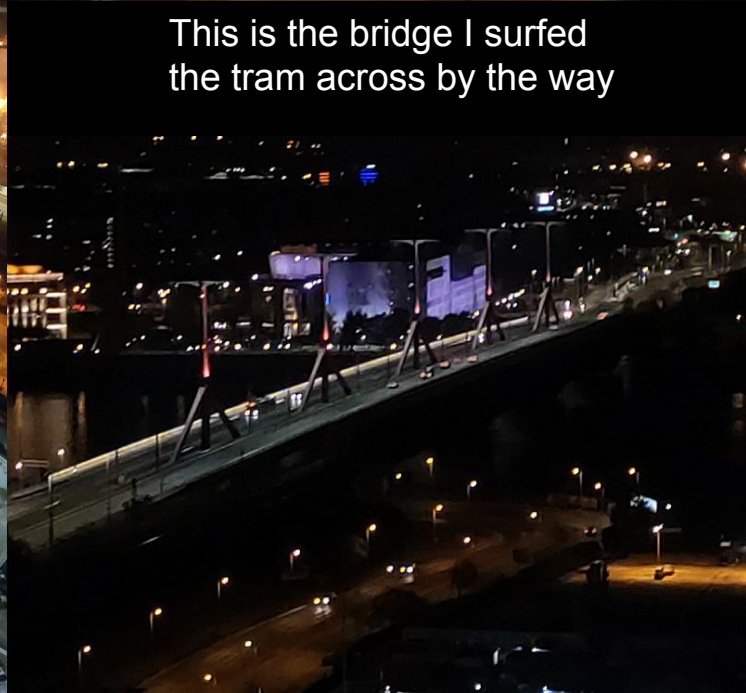
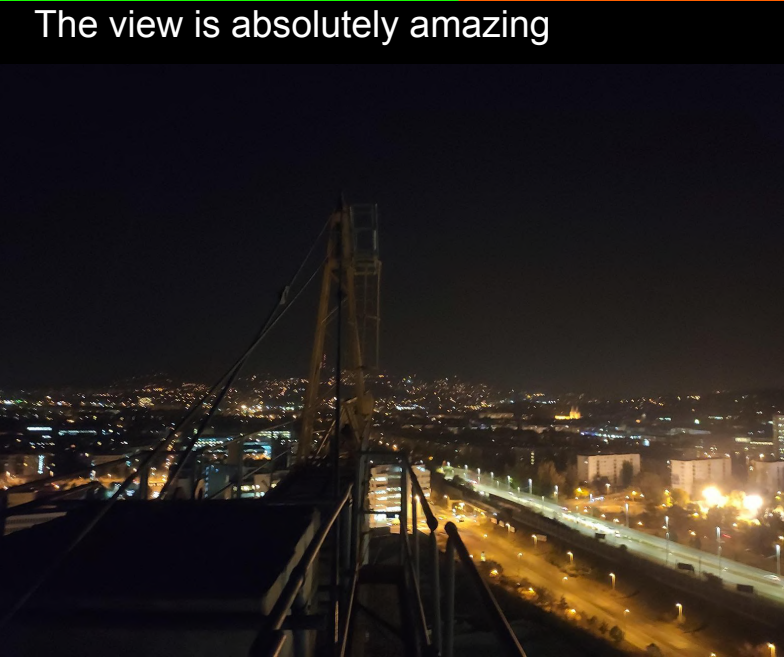
You have to climb through the cab to get on top the crane

There are so many workers sleeping here. This site is huge



URBEXLIFTS Crane climb in Hungary

The view is absolutely amazing

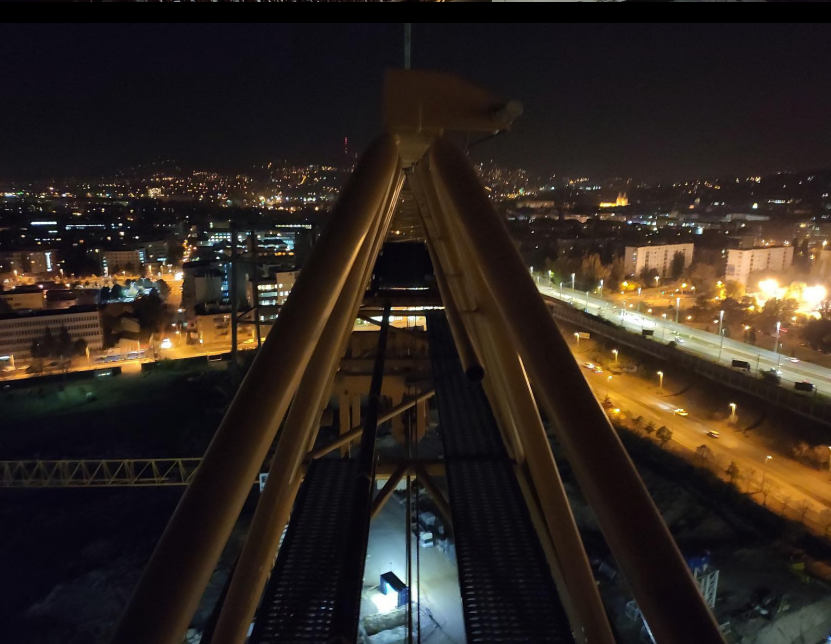


This is the bridge I surfed
the tram across by the way

Let's drive it! This is an old crane so it makes epic relay sounds. I managed to control the hook and trolley but I couldn't turn it sadly. At least security didn't notice me because that would be loud



URBEXLIFTS Crane climb in Hungary



URBEXLIFTS

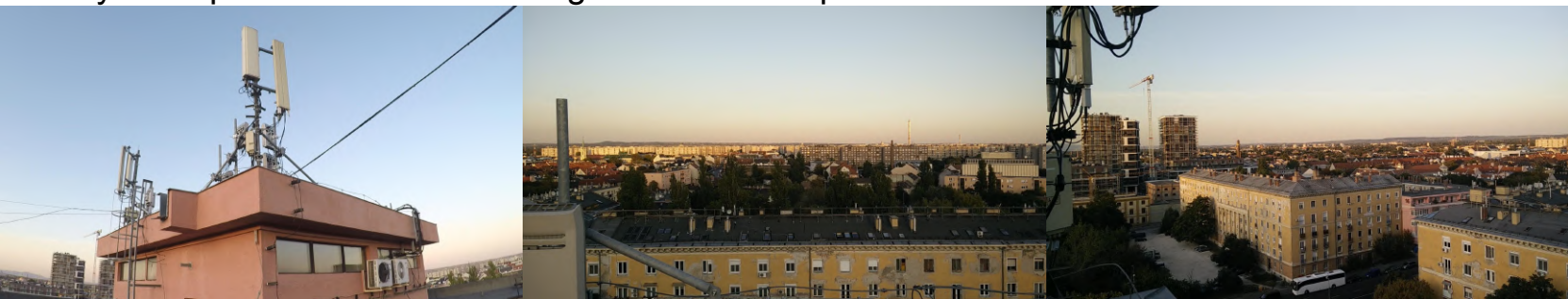
10 Storey Climbing Frame on the outside of a tower



Here is a 10 storey tower with scaffolding on one side. Lets climb it, possibly without getting seen



And here you can see that I managed to get up, even if it's impossible because they have put the effort into folding their ladders up



Climbing down was easier, even though there was a lady but surprisingly she did not even notice when I jumped down the scaffolding because she was too busy with her child



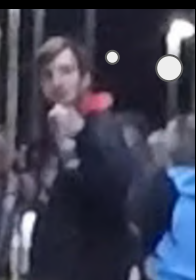
This is one part of the railway bridge where I surfed the train a few months ago

URBEXLIFTS

HIGH SPEED TRAM SURF ACROSS A BRIDGE



I don't know why I haven't done this before.
So let's do it!

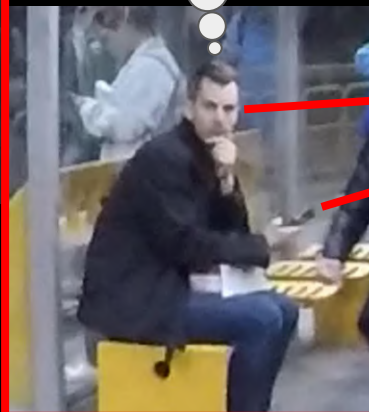


Oh wow...
I have an idea for
tomorrow!

Warning: automatic security cameras in operation
ALWAYS COVER YOUR FACE!

WTF are
you doing
behind a
tram???

Yesss, it's
time to get
popular on
facebook!



URBEXLIFTS HIGH SPEED TRAM SURF



It's not enough for me to surf it in one direction so I have done it both ways



it's so funny watching people's reactions when they spot me. They are kind of surprised and scared at the same time but they doesn't always seem to spread hate



TecstuffLifts

Hi. I'm Tecstuff here are my pages about this month, surfed many lifts and visited loads of motor rooms as usual.

pages



Nice and old Flohr Otis from 1976.



Interesting Floor positioning unit that uses shaft bars instead of selector tape.



Classic Otis relays

TecstuffLifts

Random lifts

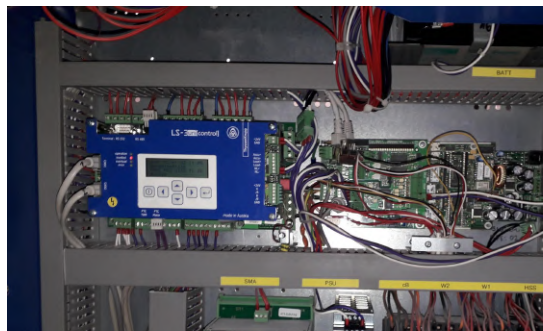


Original 1969 Westinghouse
In Belgium
Goes just 2 levels and has a nice sounding 2 speed motor.



FHW lifts modernised by ThyssenKrupp with LS 3 logic.

Sadly they lost a lot of character, they had originally DC pulsing and now they have a VF that doesn't make any sounds because it pulses at 20 kHz and is outside of human hearing. The motors are running really silent, a bit creepy to me.



Here is the freight FHW but it also got its logic replaced, this one has Thyssen TCM logic and all floors are locked in it because this one opens straight into some offices.



Baran's Pages

Lifts of Malls in Levent, İstanbul - Part 2

Last month, I showed you the lifts in Metrocity Shopping Mall. If you didn't read it, I recommend you to read that first.

In this issue, I'll show you the lifts in Kanyon and ÖzdilekPark Shopping Malls. So, let's start with Kanyon



I found 4 Gen2s and they look very cheap. Otis installs these red-black dot matrix indicators in Turkey and I don't like them because they don't fit Otis' design.



It has got the same indicator and buttons in both sides of the doors. Even the reservation keyswitch is found on both of these panels.

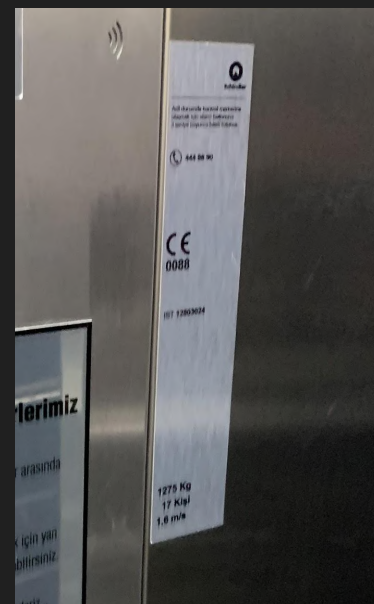


Baran's Pages

And here are the lifts in ÖzdilekPark



There are very nice Schindler 5500s with predoors. Some of them go 1 m/s, while others go 1.6 m/s



Baran's Pages

Epic Europa 2000 in Profilo Mall

Here is my first Europa 2000. Sadly, the lifts are not in a very good condition.



And I think that this one was also a Europa 2000 but it has got modernized. Again, with the cheap looking red dot matrix display.





Hello my friends! You may recall me from the January 2019 Magazine. In that edition, I spoke about Southend and how crap it was. Today my story comes from Southend Central Station.

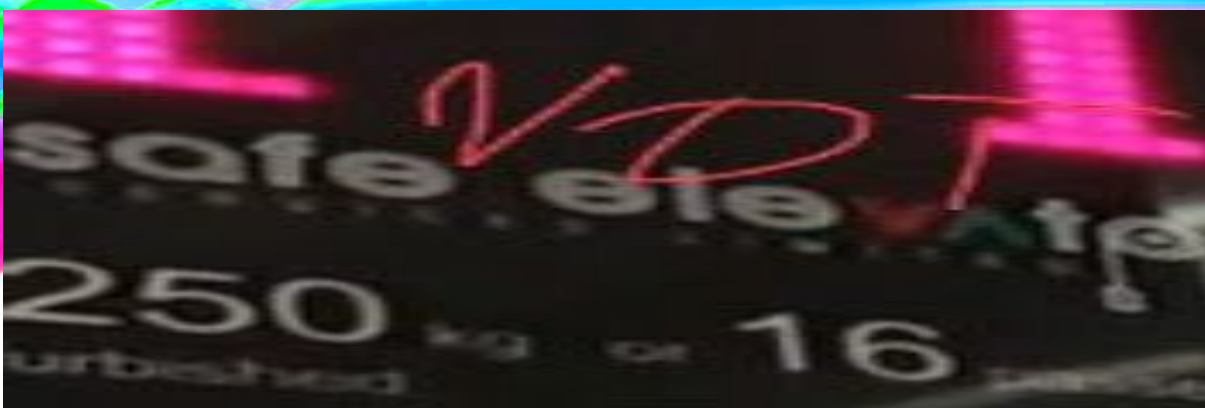
I was testing my new phone's camera by taking picture of the trains and signage. While doing this, a man in his 20s approached me saying "It's illegal to film people getting of trains" In my head, I wanted to address my rights but my anxiety got the better of me. Still, I did say "no it's not". Then he says "I'm telling the station staff" and walks off looking back at me. 10 minutes later, no one. 20 minutes, no one. Then my train arrived and I was back off home. So did the twat tell the station staff? No, no he didn't. Either he did and they didn't address me or he was just trying to piss me off. Well Done!



Class 313's on the 30th September looking beaten. I didn't go to the railtour because they get packed and it's not an enjoyable experience.



Here is the picture I took seconds before the twat approached me. Now, that's all for me. See you in next mouths magazine!



Tyrell's pages

Hi. I'm Tyrell. First of all, look above, to the picture. That is a cheap generic in Meadowhall, House of Fraser. Anyway, my slides will be a selection of what lifts to and not to go in and info about lifts as well.

1. Don't go in most Dunelm lifts (except if you have a good lift in Dunelm). They are very often cheap and crap generics made by horizon with the Piccadilly Line voice.
2. Do check out old buildings (maybe you'll find an interesting and old lift!)
3. Don't bother with generics and platform lifts at all (or scissor lifts with walls and sliding doors).
4. Go to Hong Kong to see lots of Schinder M Series and tall skyscrapers with epic lifts.
5. Don't bother with DMG and cheap generics as well.
6. DO NOT go to the lift in House of Fraser, Meadowhall (meadowhall is in Sheffield)
7. The IKEA nearby has some new Ecodiscs with the new Ecodisc voice. They are really nice.
8. Nostell Priory museum in Wakefield has an 1875 lift modded in the 1890s to no longer be hydraulic, modded in the 70s by Evans. When i went though, some stupid woman didn't let me ride it! Grrrrrrrr... Still has old cab.
9. Also, make sure to try and film as many non-boring lifts as you can.

As well as sharing info, I also like to safety break lifts and nudge mode them. I also enjoy Skyscrapersim.



An Otis lift at Brighton

Milo's fookin page

Saw a couple of tower blocks getting demolished here's two of them



CaptainSpeedbird1974's pages

Adventure in Richmond, VA



Amtrak Heritage sleeper, I thought these were all gone, so quite interesting. Build year unknown but definitely pre-1971



Amtrak Amfleet door control panel. The guard goes to any door and can control all the doors. Interestingly there are separate buttons for each direction.



A CSX SD40 in a goods yard



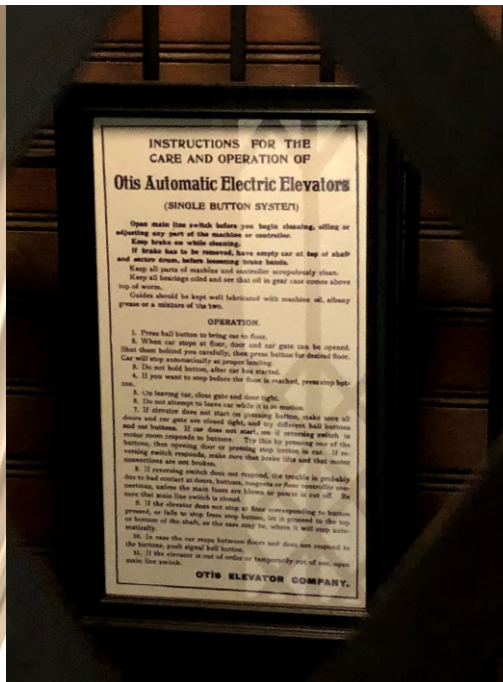
Seemingly abandoned part of the canal that is turned into a cool walking path.



Abandoned area supposedly part of the old tram network that no longer exists.

EPIC 1890s OTIS LIFT!!!!

This example was installed in a private home that has now been turned into a museum. No longer works, (the outer door has been removed) but it is still in great cosmetic condition..



This sign contains instructions on how to use the lift and how to clean it and add lubricant.

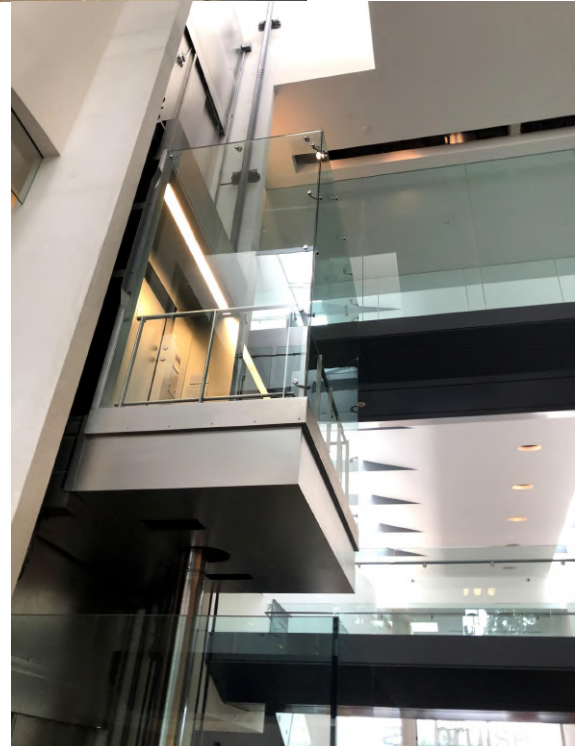
Transport in Richmond

Richmond used to have an extensive tram network, but now there are hardly any traces left of it. Now there is a BRT system called PULSE. All the buses in Richmond are Gilligs, a bus that is alright but not that interesting, weirdly these Gilligs have a front similar to the NovaBus LFS. Infact when I first saw them I believed them to be Novas.



Interesting Lifts in Richmond

Both these lifts featured here were in art museums. Also, both of these lifts have buttons which I've never seen before, and as is usual in America, it is near impossible to tell which lift company made the lift.



Quite tall for a hydraulic lift!

Some Extra Stuff.



This sculpture of children playing has been chained up to stop theft. However this changes the mood of the sculpture significantly.



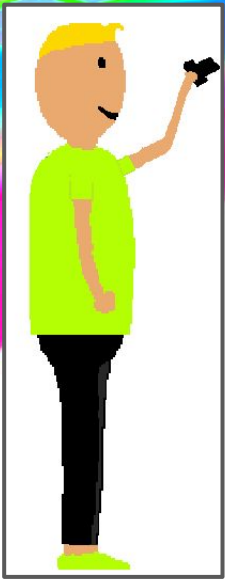
Slightly spooky area outside some toilets in a museum, looks almost like a service area.



At Richmond train station, the old tracks under the train shed have been covered over but some places let you see in.



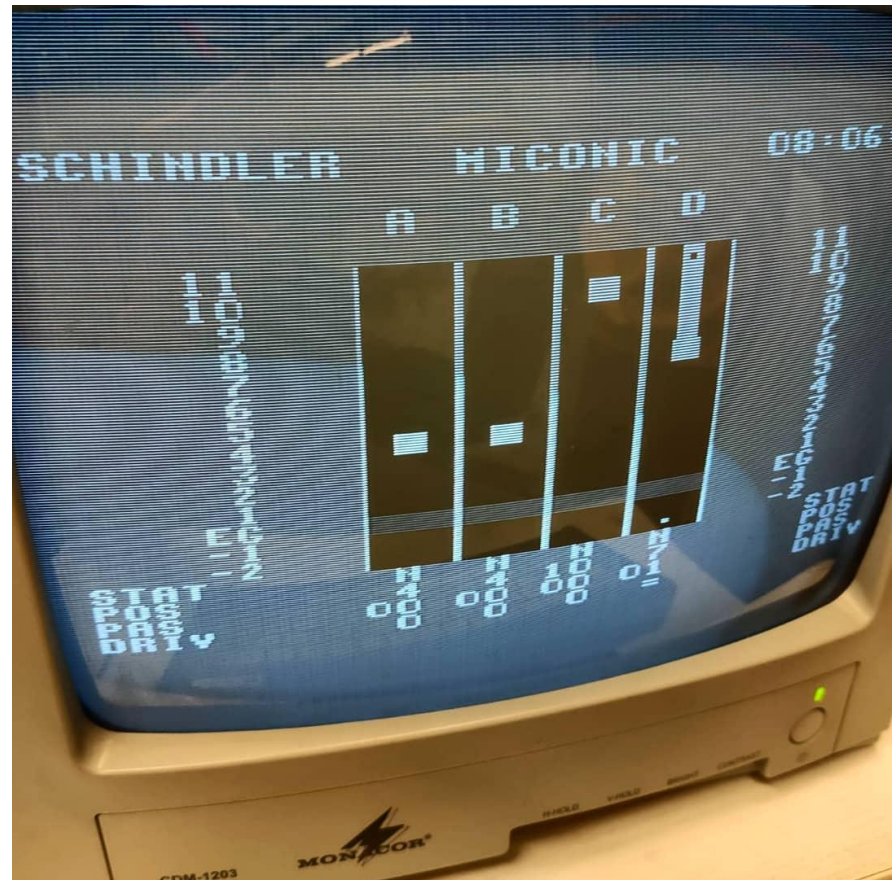
Car Park pretending to be a Shopping Centre.



BEN'S PAGES

This month I finally managed to get into a Schindler Miconic motor room from the early 1980s with a computer monitor.

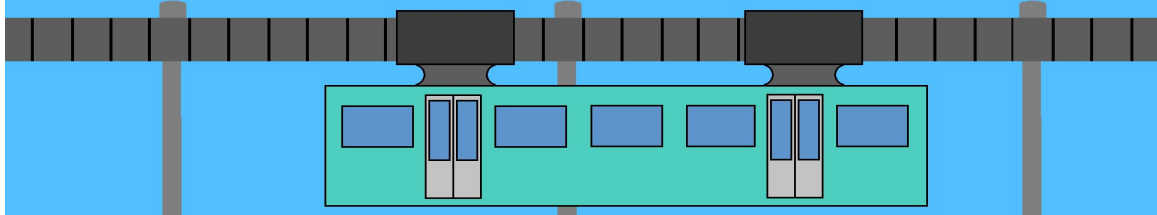
This is the best lift logic ever invented.



CHEAP FLIGHT ADVENTURE TO



DUSSELDORF



In Dusseldorf and surrounding area, there is a surprisingly large amount of interesting public transport.

There is so much to see, from Trolleybuses, U bahns, S bahns, Dangle train, trams.



In Essen, they are still running the original Docklands light railway trains.



The Wuppertal dangle train is amazing.

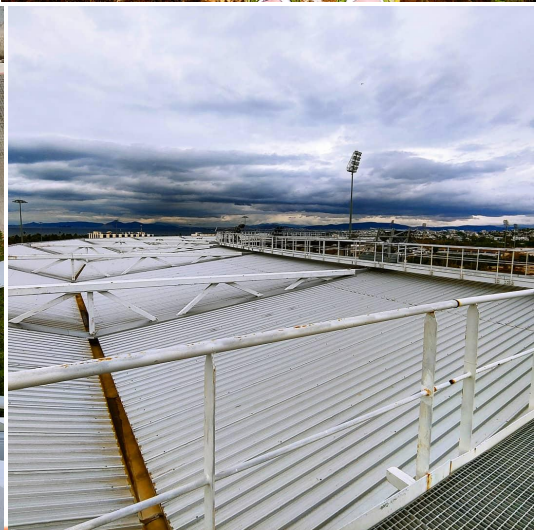
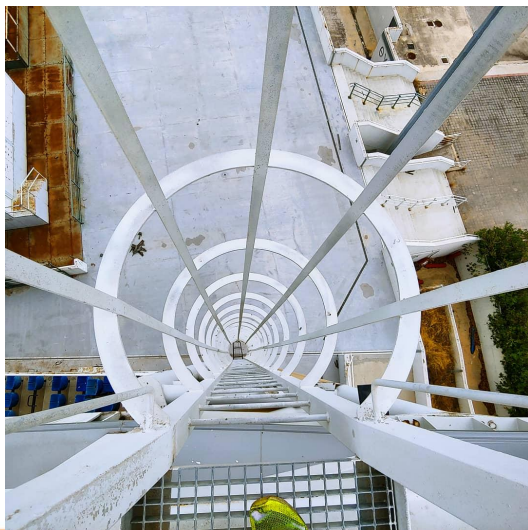
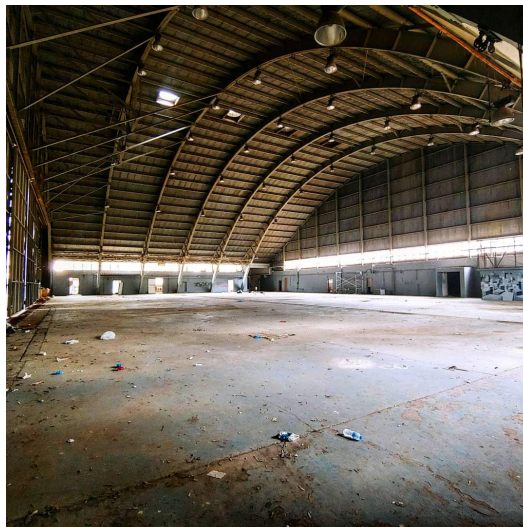


CHEAP FLIGHT ADVENTURE TO



Athens had a lot of abandoned things to see. Including an abandoned airport, abandoned olympic park, and abandoned cruise ship.

A crazy lot of things to see in a single city!

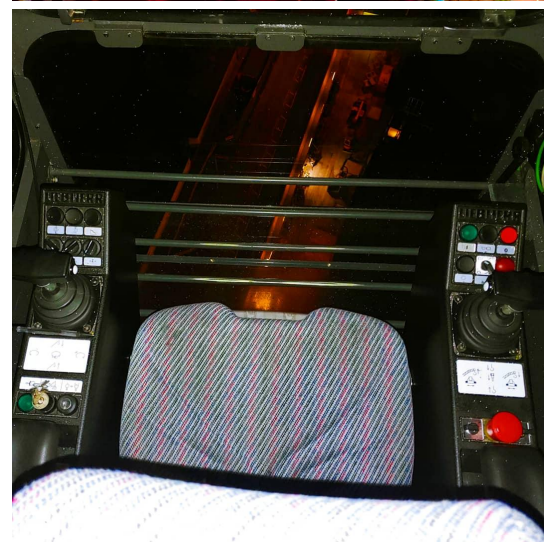
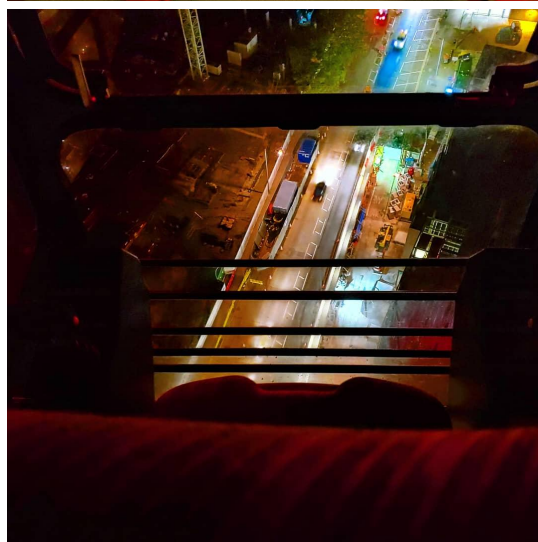
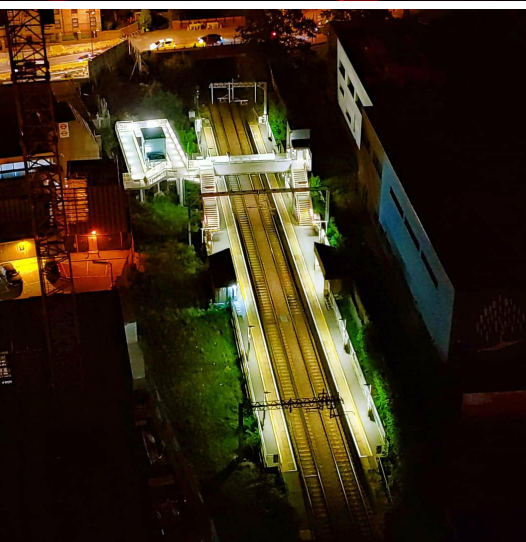
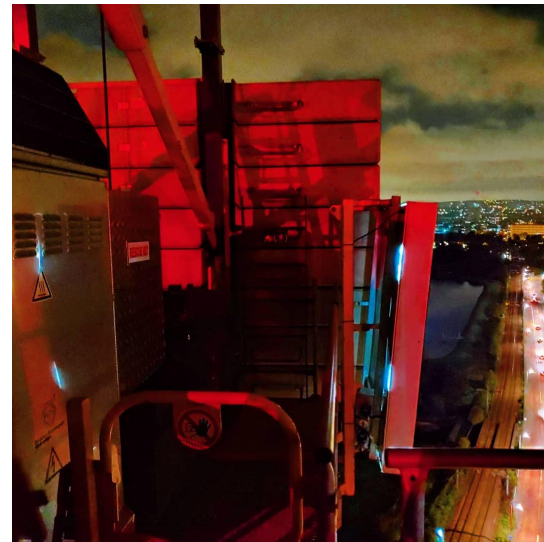
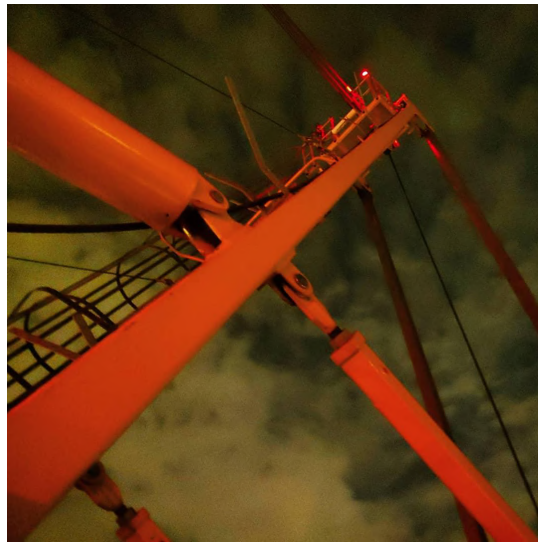


Crane climbing time

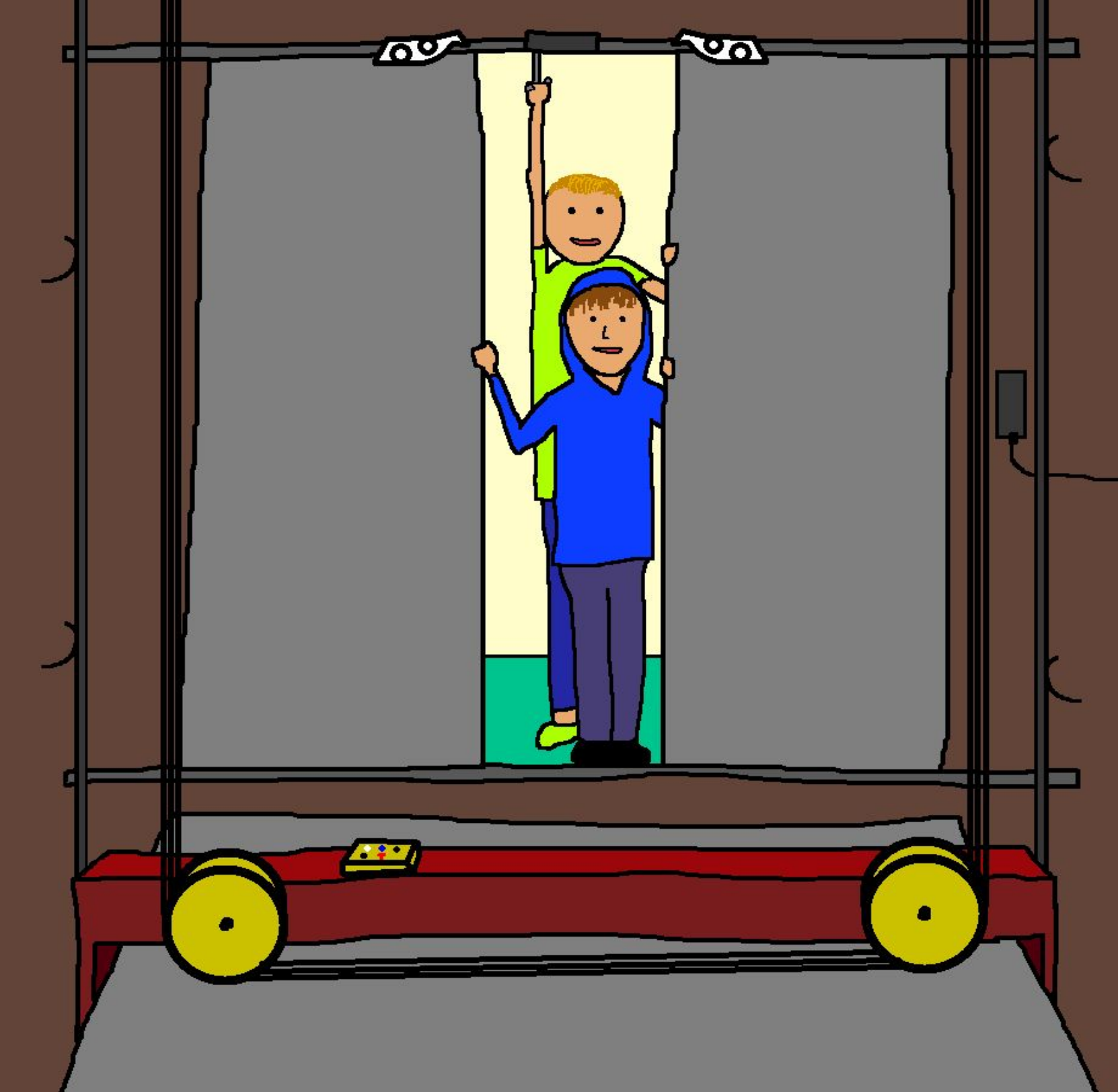


There is no better place to be than up a crane.

Sadly though, this one was on generator, and did not drive.







THE END