



(NOVEMBER 2019)

URBEXLIFTS

URBEX Hilton Castle - Huge plant rooms and roofing

This hotel has two main parts connected together, an old church that is converted and a newer hotel building



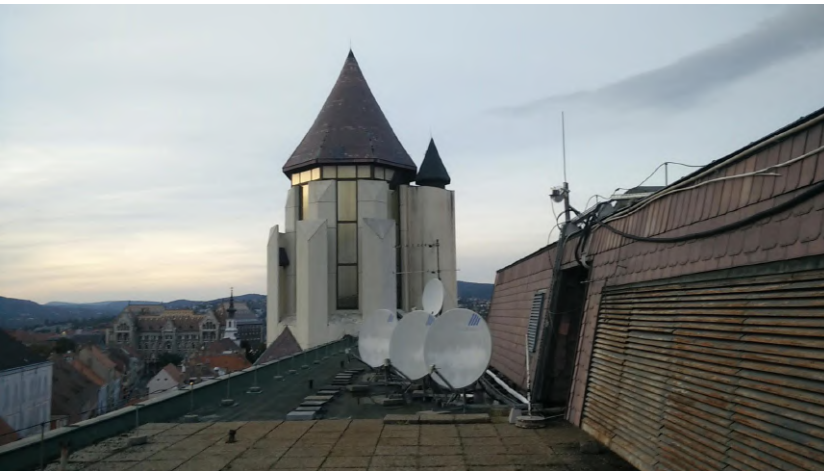
The inside is not too interesting so let's roof it!



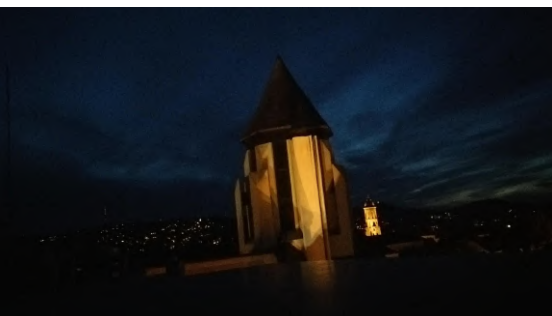
This roof gives a very nice view of Budapest



There is a big empty hole in the roof (around 3 floors deep) that has no windows and no fence around it and it's really easy to just walk into it, I had to be very careful with this, it's so unexpected



I really wanted to climb inside this weird tower, found a window to go in that was not completely shut but it was somehow stuck and the ladder from the staircase had a padlock on it



Let's get down to the plant room and explore it all ! The whole plant room is pretty much only made out of tunnels under the roof and they have to fit everything in them

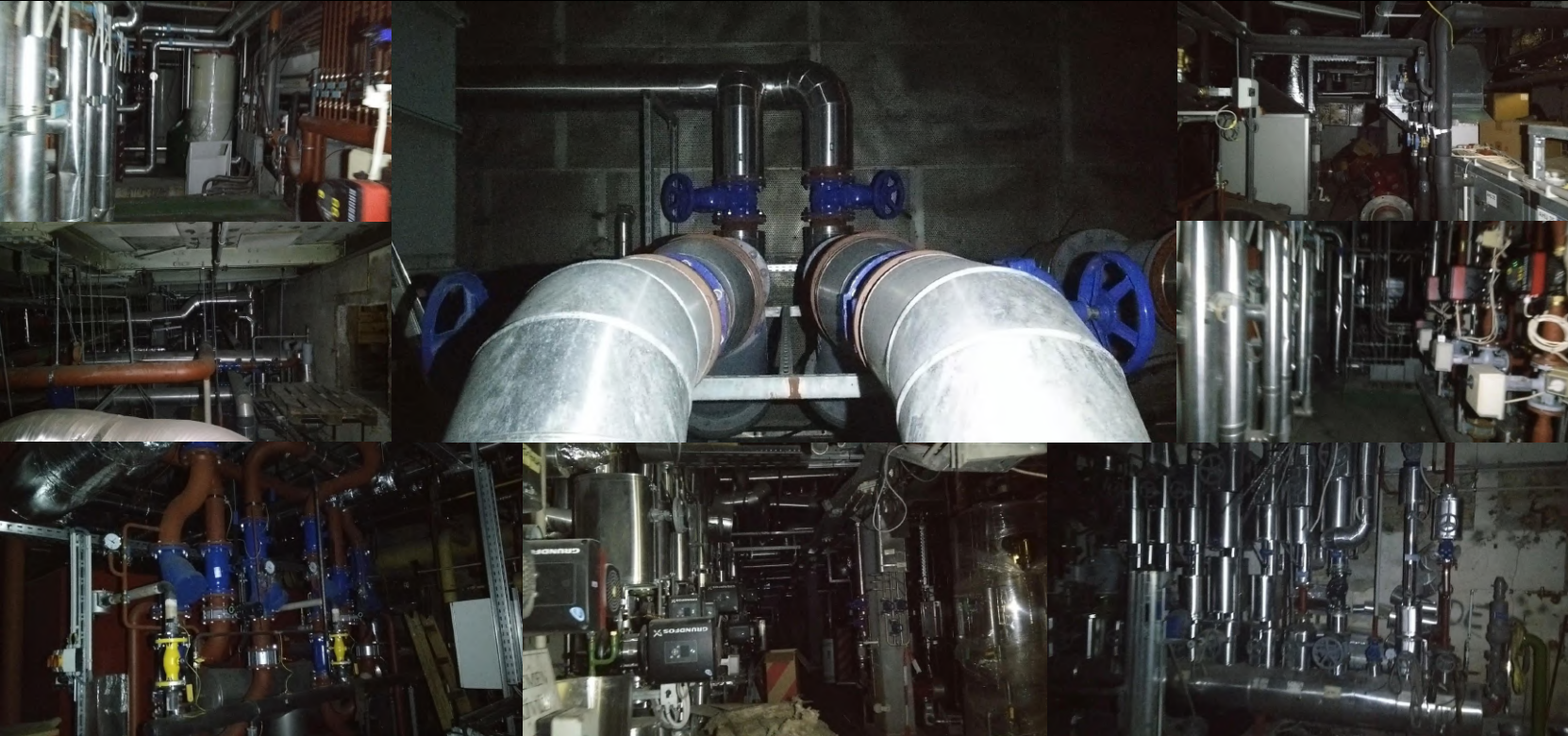


Nice to see such old equipment still running and being properly maintained

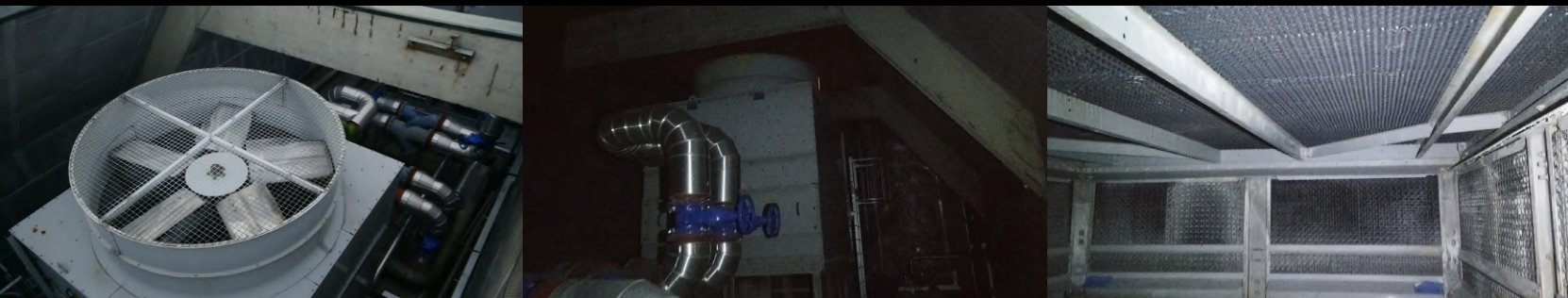




There are pipes everywhere you look!



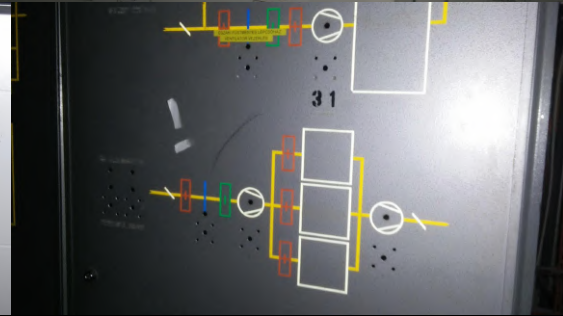
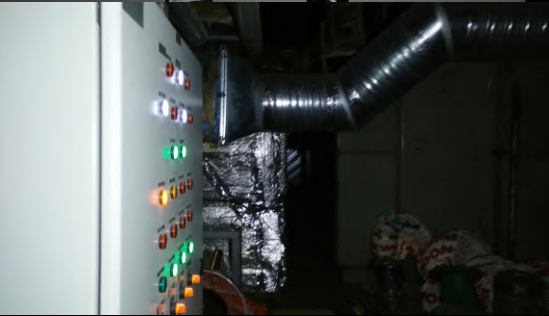
Climbing down to huge air conditioner units from the roof



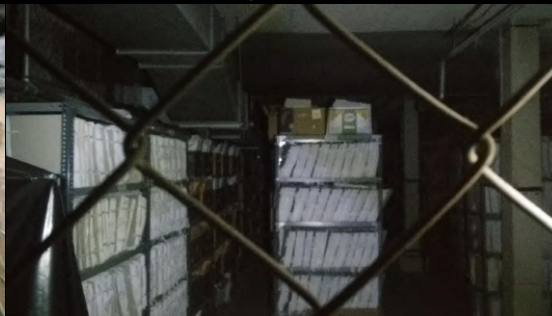
Lots of junk lying around, hopefully they are not into modernizing anything



Controllers have been replaced but they new ones still look interesting



They store their documents in the plant room of course which is already full of machinery to a level where it's not fun to squeeze between them anymore



I wonder how many belts they have to replace every week



I'm really good at understanding signs, so if you wonder what they do mean then here are some examples that can help:



This probably translates to boiler room light



Waving your hand is not allowed in the plant room



Free wifi connection out on the roof



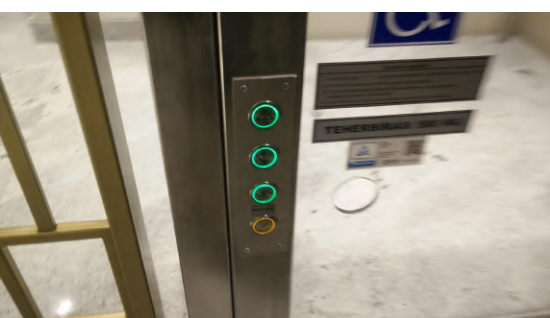
Now this one is clear
Don't touch this door unless you want to get in trouble with a plant room guy watching TV behind it!



Open for free lightnings. It was not working for some weird reason



This distribution box has a massive door! This should continue to work in case of a fire



Here is a disgusting slow platform lift and its logic. Imagine a very fast platform lift with good acceleration that launches people into the fake ceiling!

Let's now surf some lifts!

First I go and stay on top a posh glass Gen2 for more than 5 minutes without getting caught. But there is more interesting lifts to stay on top for more than 5 minutes in this hotel so fuck this cheap thing



Let's rather surf the modernised lifts with epic looking shafts!



I have never seen a lift door in Hungary that needs drop key. All Otis are triangalized



URBEXLIFTS

CITY CENTER CHURCH CLIMB

Lots of churches get renovated this year in Budapest so I take every little chance to climb them because they have a great view. Most churches are completely unsecured, but this one had security at the bottom so I had to avoid that by climbing on the side



Railway Bridge URBEX

Here is another bridge from Budapest, the only one with active security. I was very lucky to get up there for the first time, never managed to sneak back in again



The walkways were open for public as long as the other bridge next to it was not built. Now it has armed guards to protect the bridge from nothing. Notice how they just left the stairs in place



This beam walk was rather scary



URBEXLIFTS



ADAPT MOTION

I am back on track with the magazine and now I'll try to work more on my Youtube!
Anyways let's start off with some lift improving!

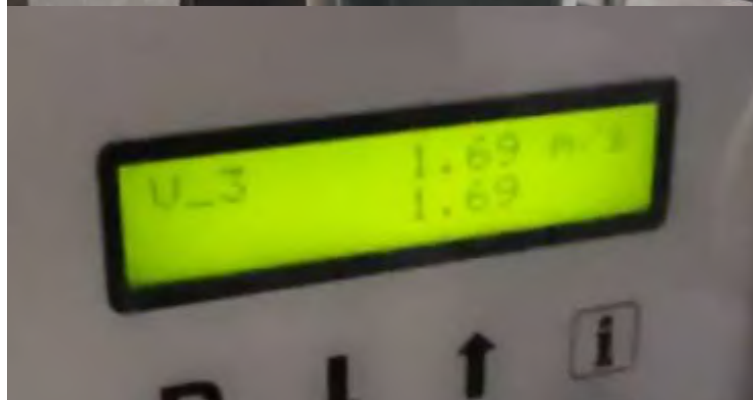


The governor is rated for 1.6m/s but it trips at 2m/s

Why not increase the speed?
I mean it was 1,45m/s when we came. THAT HAS TO BE CHANGED. NOW ITS 1,85m/s

Also because the lift was not done with improving as the accel and decell always has to be increased. This allows the lift to get to 1,85 in no time. AND IT FEELS ABSOLUTELY INCREDIBLE!

We always make sure we leave the motorroom without any lifts going out of service because of us.



Here we can see the VF target speed. We have set it to 1,69 as we always test if our improvements work out

ADAPT MOTION

NEXT LIFT



This lift has the same VF but a different logic. Its an old (Kollmorgen) PLC.

Its very very simple and we managed to tweak the settings in a way the VF and Logic work fine together.

I mean thats not often the case as some cheap generic logics are soooo scared of overrunning they emergency stop as they cant calculate intelligent leveling.

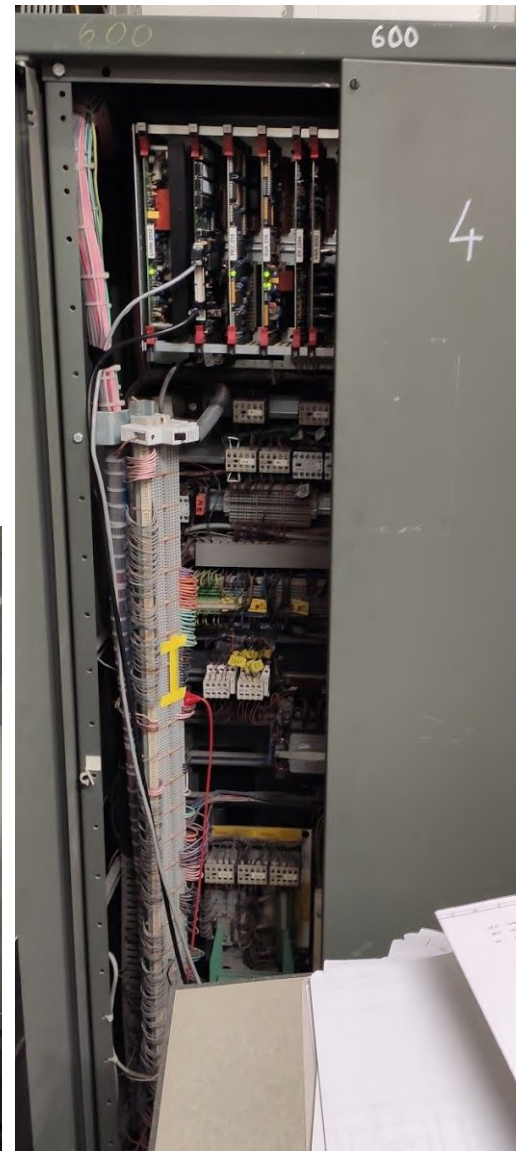
But this one is not scared at all and levels so damn efficient thanks to the improvement!

You will see a long video of all improvements and surf I've done over the weeks in a few days time. Keep an eye on my channel ;)

ADAPT MOTION

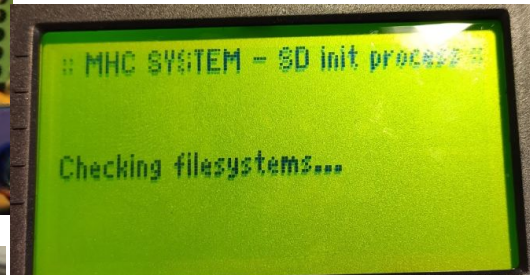


EPIC MICONIC V



ADAPT MOTION

COLLECTION OF VARIOUS LIFTS

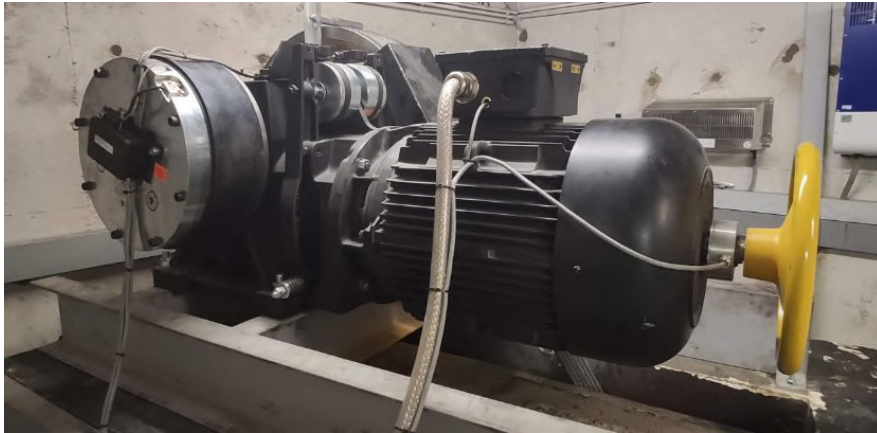


ADAPT MOTION

MPK 411



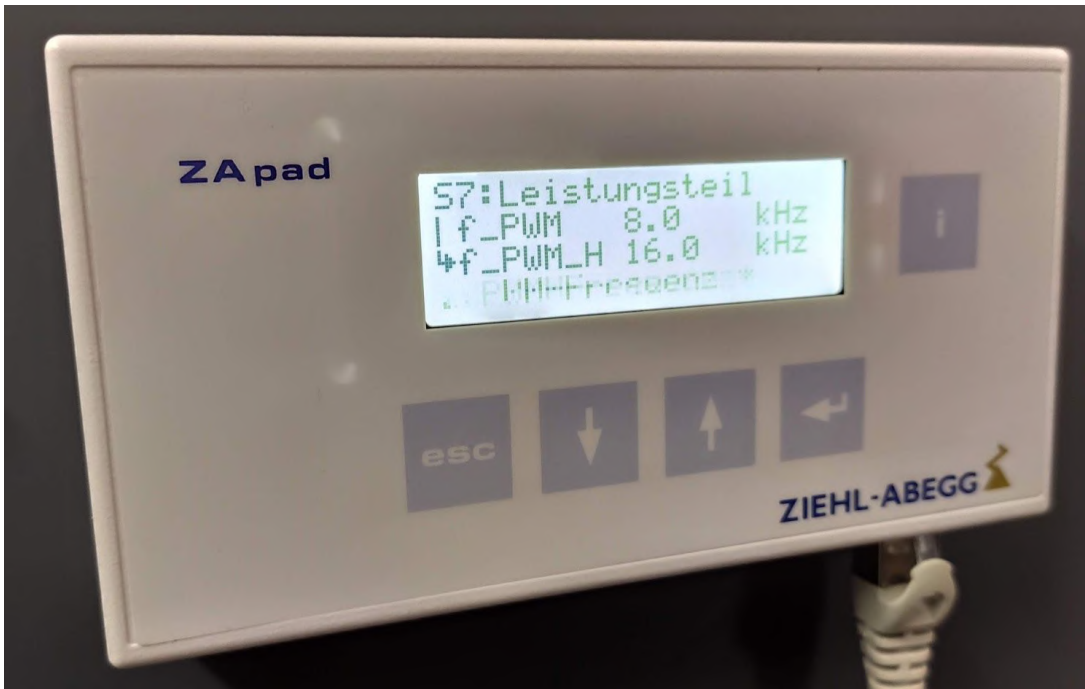
The motor



No can bus signal
from the left lift



ADAPT MOTION



New ZApad to program the new Zeihl VFs



LED Bodge!



Nice cartop

ADAPT MOTION



My new motorbike!

It's a KTM Duke 125cc

With good weather I'll drive nice long trips



This motorbike trip was to Roermond!

Next time maybe something more far away?

Devon Transport's Page

Novembers Transport News

This Month In The Southwest There Has Been A Few Interesting Things Going On.

These Mainly Being Plymouth Citybus. Citybus Are Waiting On There Delivery Of 10 or 11 Enviro400citys. These Should Be In Standard Livery Unlike The Current Ones Witch Are In SPARK Branding.....

Citybus Has Now Also Got A DemoBus Enviro400City BIOGas From ADL For Testing



WA17FTZ Fleet Number 565 In Standard Livery



WA08LDJ Fleet Number 137 In Standard Livery

Plymouth Citybus Has Also Got 4 Enviro200s From EYMS, These Will Be Painted Into The Swoosh Livery Like The Current Enviro200s In The Fleet...

With These Buses Joining The Fleet This Means More Of The Older Buses Will Be Leaving Citybus.. These Are

Scainas
Plaxton Presidents
Dennis Tridents
Some Of The Dennis Darts

Ive Contacted The Management Team At Citybus Who Have Told Me We Will Be Seeing A Glowing Bus Again This Year, For Your Chance To See It Glowing It Will Be Out From The 29th November To 2nd December (If It Dont Break Down Like Last Year) But What I Dont Know If Its Going To Be The Same As Last Year Or Something New So Something I'll Be Out For Myself and will post what i find in december



Last Years Glowing Enviro400city



Stagecoach Southwest Has Announced That They Are Doing A Road Trip Around The Southwest With Their "Santa Bus" As This Is Not Something I Think Has Been Made Yet Here Is What It Shows On Their Poster

On A Side Note, All Ex GAL Enviro400s Have Been Converted To 1 Door Now, and after a few years of citybus getting 2nd hand buses from London, personally I like these the most, amazing sound and some are quite quick, and the conversion to 1 door makes it look brand new, just the only sad thing is that these replacing older buses we are having less bus types, it's all Enviro200, 400, 400city, 400mmc down in Devon, ADL sure does well with the south east



● Safety Breaks Lifts Pages

The Otis Europa 2000's at callendar square shopping centre have always been rough lifts through lack of maintenance but this year has been the year from hell for the lifts.

So far the lifts could be getting modded and by the sounds of it it looks like t could be happening early 2020 however if it's the same company who modded the hydraulic Europa in the centre then the lifts will become very unreliable

I will hopefully be able to update about these lifts soon

The glass Europa at callendar square got replaced by a generic in 2018 after the logic became a bit dodgy on the Europa. Ever since the lift has been modded it has been out of order more times than it has been in server.



I was recently at Stirling land of good lifts except the kleemann lifts on the Forthside bridge as they have been heavily vandalised and are dodgy in general when I noticed one had got a new indicator.

I don't see the point in the new indicator as the lift isn't actually working sadly.

The funny thing about the kleemann lifts is they used to have glass doors and a glass panel at the back and due to vandalism they now have normal doors and a metal panel at the back apart from the bus station side as it has two sets of doors.

● Safety Breaks Lifts Pages

My local buses news

Where I live we have a bus company called first Midland Bluebird the company used to be called Midland Bluebird and back then they were very posh and reliable but I wasn't around at that time.

Within the first week of November Bluebird had a few crashes two Scania Omnidekka's and a Wright Eclipse Urban. Ever since Bluebird got rid of the Wright renown's, the Dennis tridents and the pointers Bluebird has gone downhill with their buses before 2014 Falkirk was full of good old buses then they got Streetlites and second hand Gemini's and scrapped all the old buses apart from our old Wright solars and Wright Eclipses

First Midland Bluebird have finally been updating there Bus livery from the Barbie livery and The Olympia livery to there Bluebird livery it's took them forever but least it's happening I like the blue and white livery but I'll miss the blue ones and the Barbie and Olympia one



Sneaky plaxton President that suddenly disappeared



A blue omnidekka and an Olympia President sitting in the bus depot



Baran's Pages

Problem on Kone scrolling dot matrix displays

There are 4 arrows that scroll down or up and 3 of them are placed well but the 4th one has more margin between the next arrow.

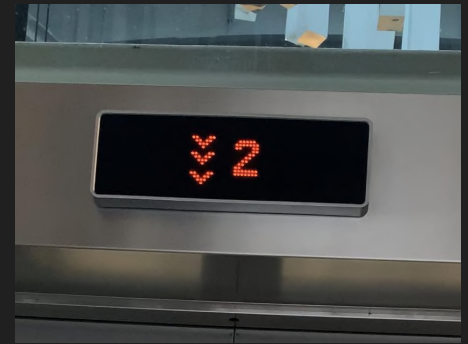
Here are some images:



All of these arrows are placed correctly



Uppermost arrow is misplaced



Bottommost arrow is misplaced

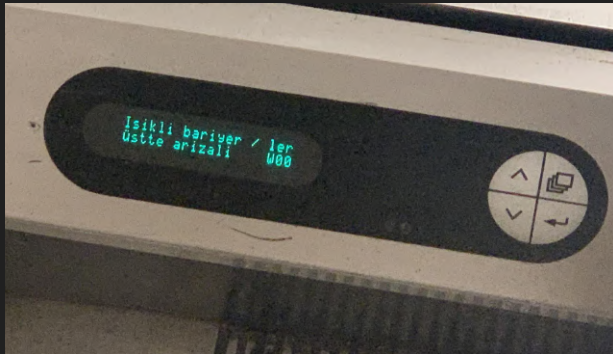


Same problem in KSS140, normally there are 3 LEDs between each arrow but the top one has 4 LEDs

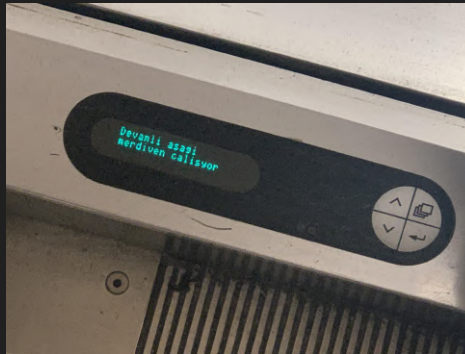
(floor number is displayed fine, refresh rate of the screen didn't work well with my phone's camera)

Baran's Pages

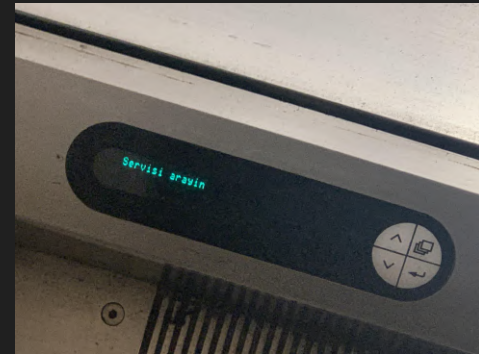
thyssenkrupp / Thyssen escalator fault displays



Lighted barrier(s) on the top floor are not working



Continuous down
Escalator running
I shot this on a moving walkway and yes, it says escalator



Call the service



Speed control error



Password:

LIFTINUM's PAGEs

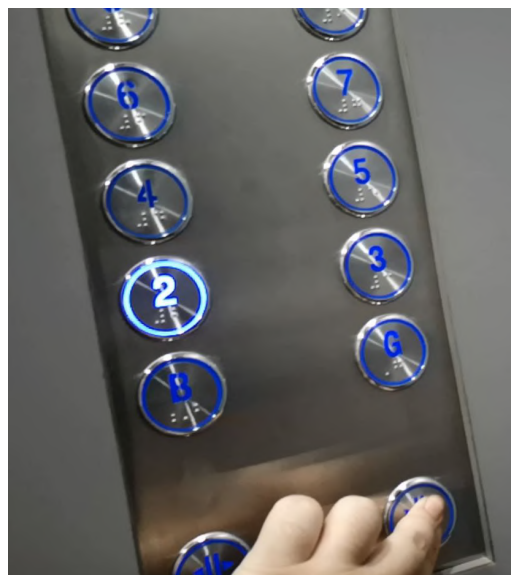


**Lovely lifts and
trains in Bangkok!
Posh Sigma and
some touch-screen
Otis lift!**

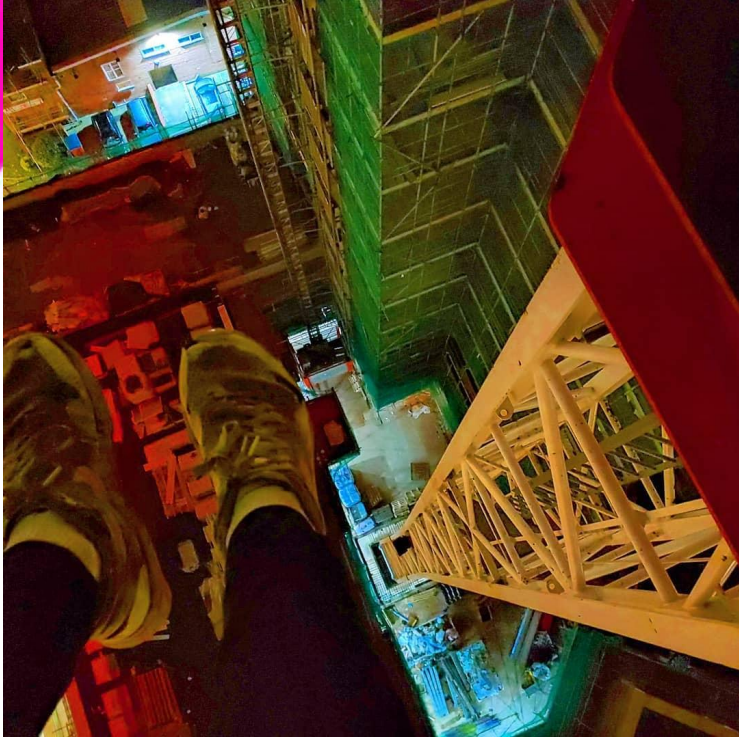
LIFTINUM's PAGEs



LIFTINUM's PAGEs



BEN'S PAGES



This month I climbed loads of cranes as usual.

I have been on cheap flight adventures to Wroclaw, Kharkiv and Riga.

The tram system in Kharkiv was fascinatingly knackered.



CHEAP FOOD IN POLAND



Nice big Pizza from Pizza hut.

£5

Just as good as in England but much cheaper.

A pizza thingy from KFC

£4

This tastes far better than KFC in England and it is much cheaper.



100g Milka chocolate

£0.60

Never seen it this cheap before, so I brought a whole load.





Kharkiv was one of the most unusual and interesting places I have been. It is like stepping back in time. I don't think anywhere can beat how from the past everything is here.



These ukrainian bottles of water are an odd colour. I definitely did not piss in them!



COMPARISON OF ER2 TRAINS

TICKET PRICE FOR 20KM

Kharkiv Ukraine



6 UAH (£0.18)

Riga Latvia



1 Euro (£0.86)

Both Ukraine and Latvia have the same trains, but the trains could not be more different.

In Latvia the trains actually work well. They have a nice controlled acceleration with all 20 resistors activating at the right moment.

But over in Ukraine the trains are completely knackered.

The resistor start barely works. The acceleration is very poor. It is amazing that trains run in service in such bad condition.



And the toilet is out of this world!

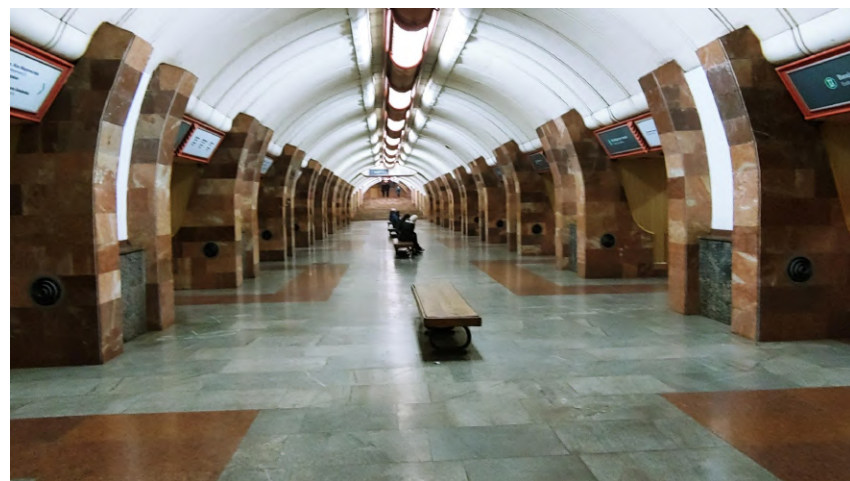


KHARKIV METRO STATIONS



These metro stations are amazing. So much effort has been put into them. This is a complete contrast to the rest of Kharkiv where most things look completely knackered.

This station is completely over the top. This was my favorite station.



KHARKIV METRO TRAINS



MetroVagonMash type E.

An absolute classic.

I believe that this version of type E is called EZS.

Top Speed: 50 mph

Service Speed: 45 mph

Acceleration 2.8 mph/sec

MetroVagonMash type 81.

There were many variations of this train in Kharkiv. Some of them had DC PWM.

Top Speed: 55 mph

Service Speed: 50 mph

Acceleration 3.2 mph/sec



Type E modernized.

It looks bad on the outside, and even worse on the inside. But at least it still has its original DC motors and resistor start.

Interior of an original type E. The best train on the Kharkiv metro.



Kharkiv's Soviet blocks are amazing.
The creepiness of these buildings is
unreal.

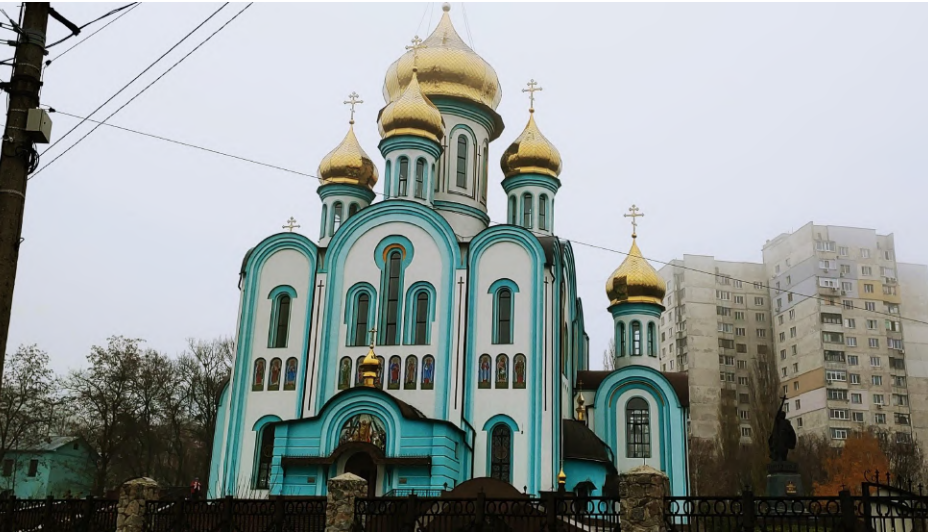




Everything in Kharkiv is completely run down and knackered. Apart from a few certain things.

The central train station is very well kept and posh looking.

A certain rather small area in the center of the city is well kept. In this part the streets are maintained to the standards of a typical european city. But as soon as you walk out of this area the streets go back to being very run down.



Certain buildings are kept very well maintained, such as this church, which is a massive contrast to the soviet blocks around it.

RGB LED bridge in the city center

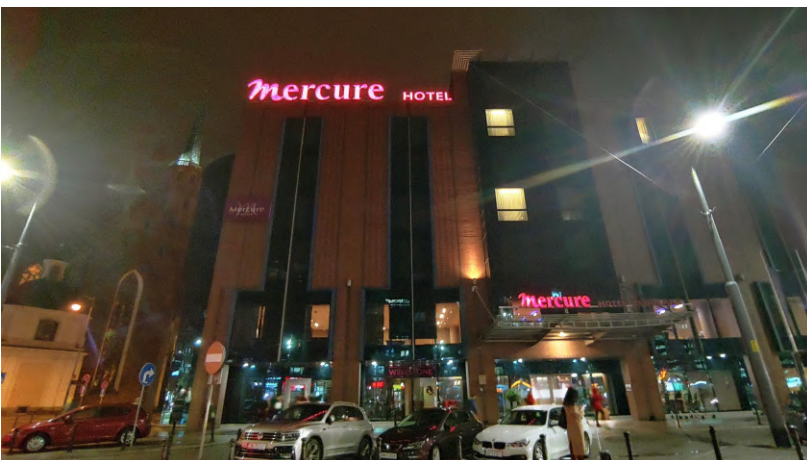


ADVENTURE IN WROCLAW



Wroclaw is a typical Polish city. It is a nice city and is interesting.

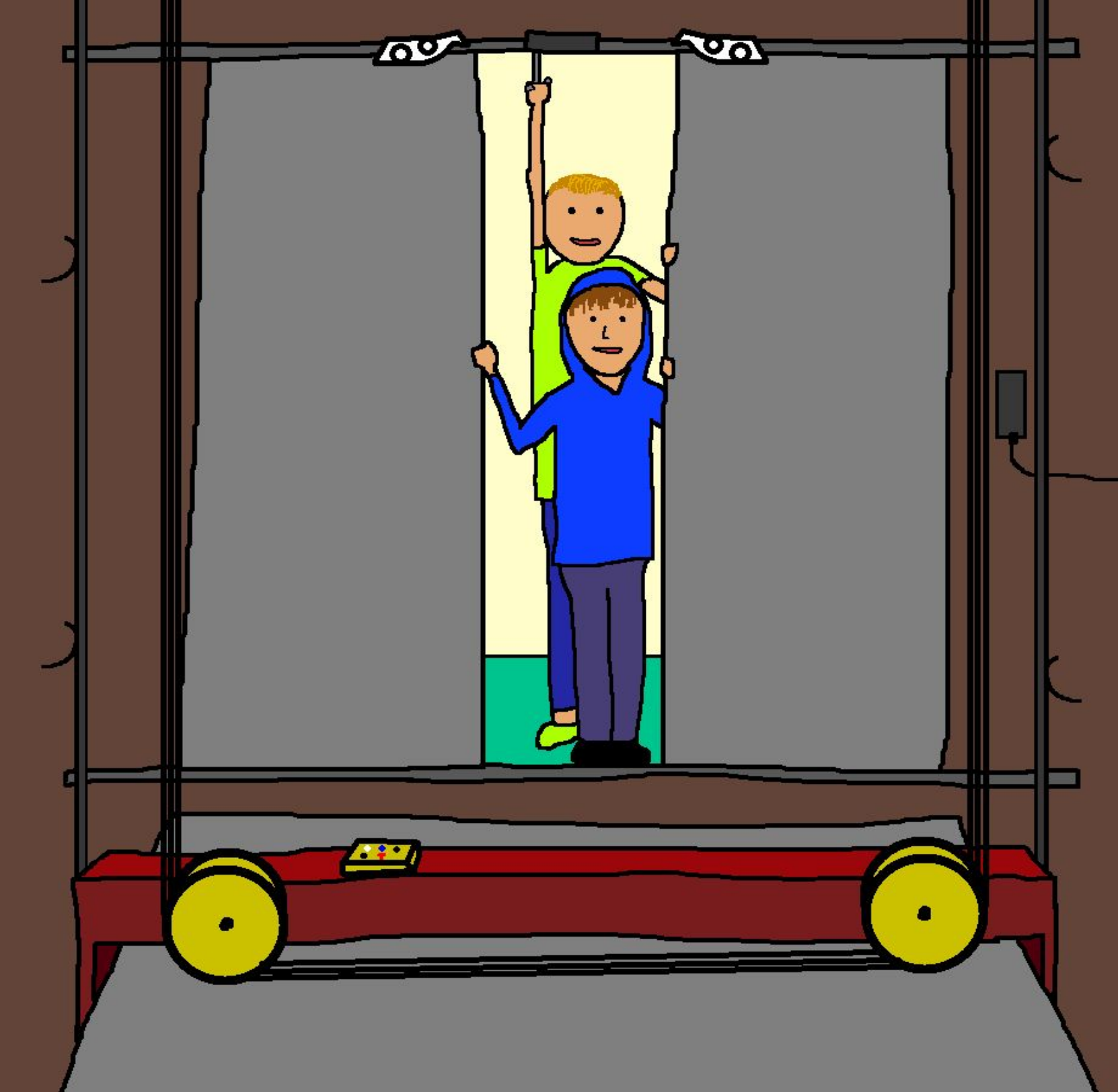
This statue of the people sinking into the ground is quite thought provoking.



TRAMS IN WROCLAW







THE END