



Tasting Club MAGAZINE!
(JANUARY 2020)

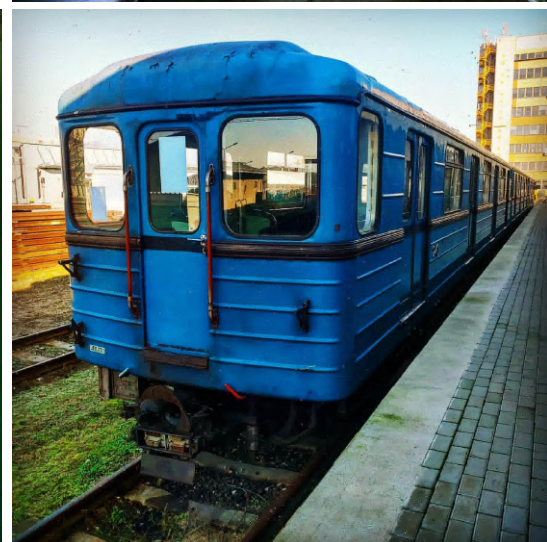
A TRIBUTE TO BUDAPEST'S TYPE E



A very sad looking Type E left in a depot in Budapest waiting to be modernized. I believe this is the last one left.

It is very sad and depressing that Budapest has ruined their classic trains.

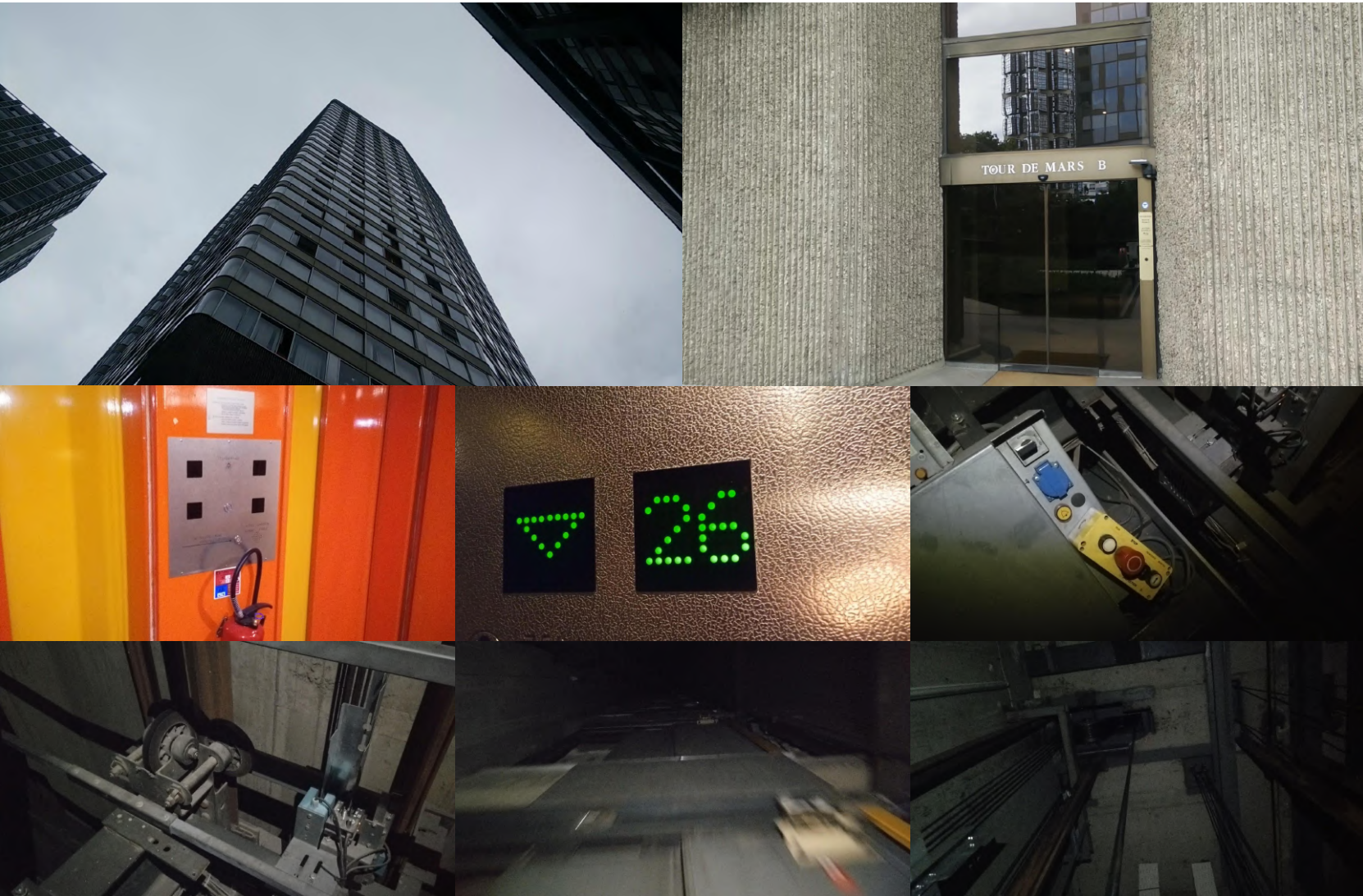
Who in their right mind would modernize a Type E. They are amazing trains



URBEXLIFTS

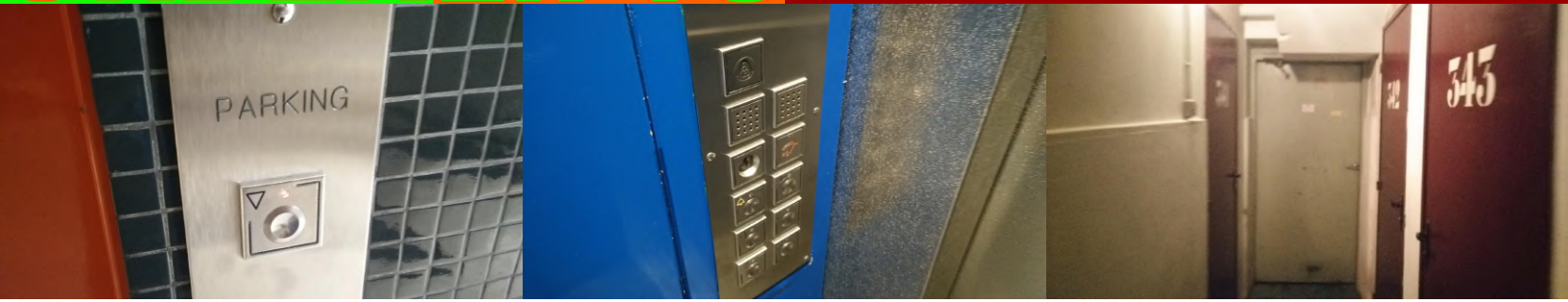
Surfing epic lifts in Paris

When I got to paris, my first day was looking around for tall towers to lift surf. I went to these towers because they were all in the posh area so they should have epic lifts. I was not disappointed! Let's get right into it! Here is the first tower I got in, it has 4 fast lifts, let's surf it!



Now I go to a smaller car park lift with Thyssenkrupp vandal buttons





Now to one of the best towers. It looks very posh inside and it has epic schindler lifts!

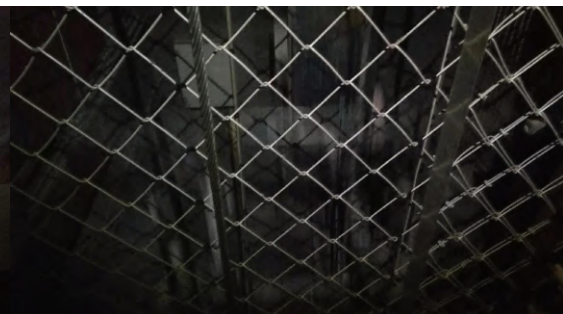


Here are the fire resistant doors with a questionable safety feature. If they latch, then you are trapped in the lift. But I don't really give a fuck since I have the key for it. The lift has phones on all floors, I have never seen this in other countries





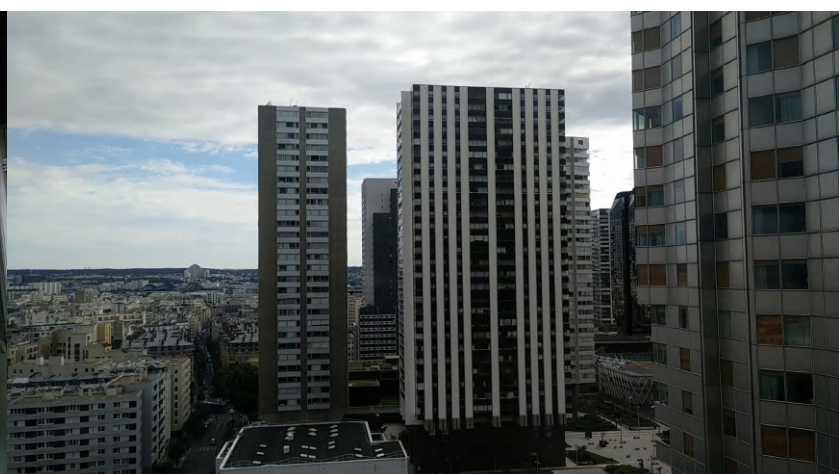
Motor room access!!! ..is boarded up



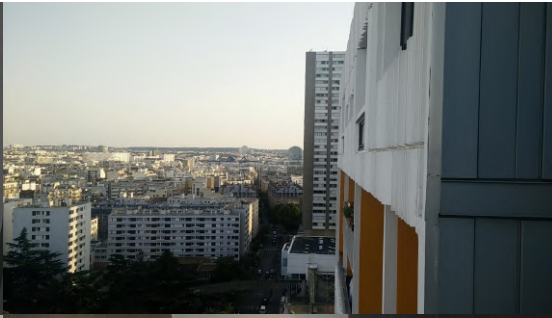
Now to a very shit tower with a otis I don't have a key to surf



Now to a not that tall tower with an epic glass lift shaft. Can you notice something important missing on the first picture?



The main lifts in this tower are Thyssenocraps. Let's ignore them and surf the ecodisc



Very cheap way of supporting glass panels. Let's hope they don't fall down



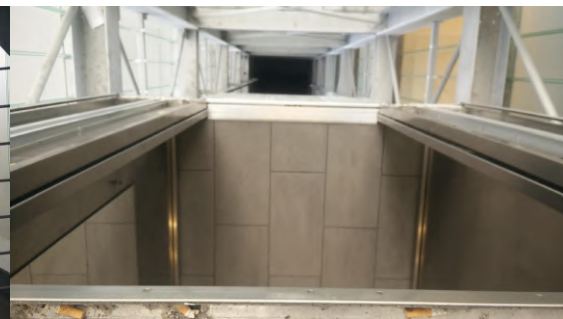
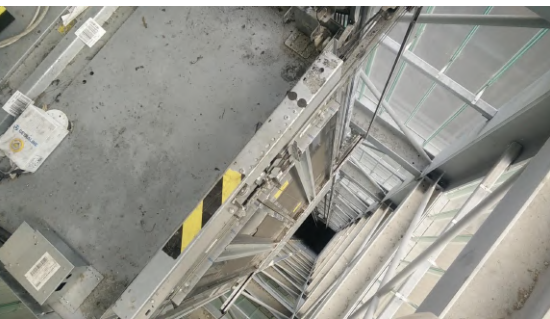


This shaft is a very nice place for climbing

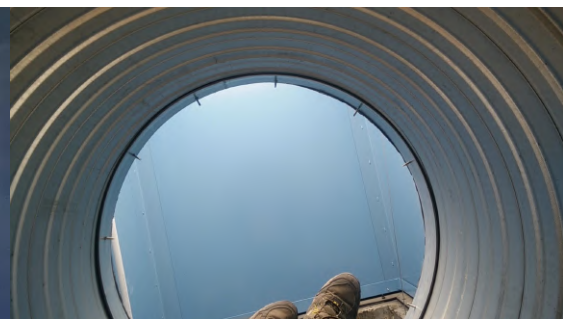


Weird unused space on top shaft

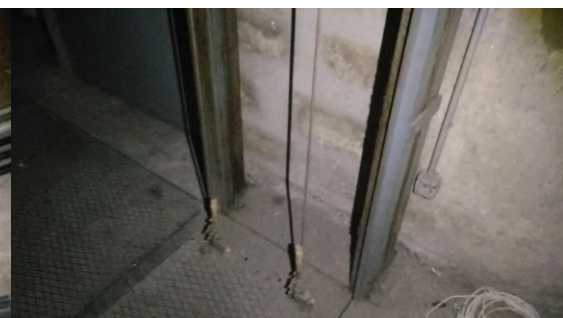
Doors opening!



Now to the next tower

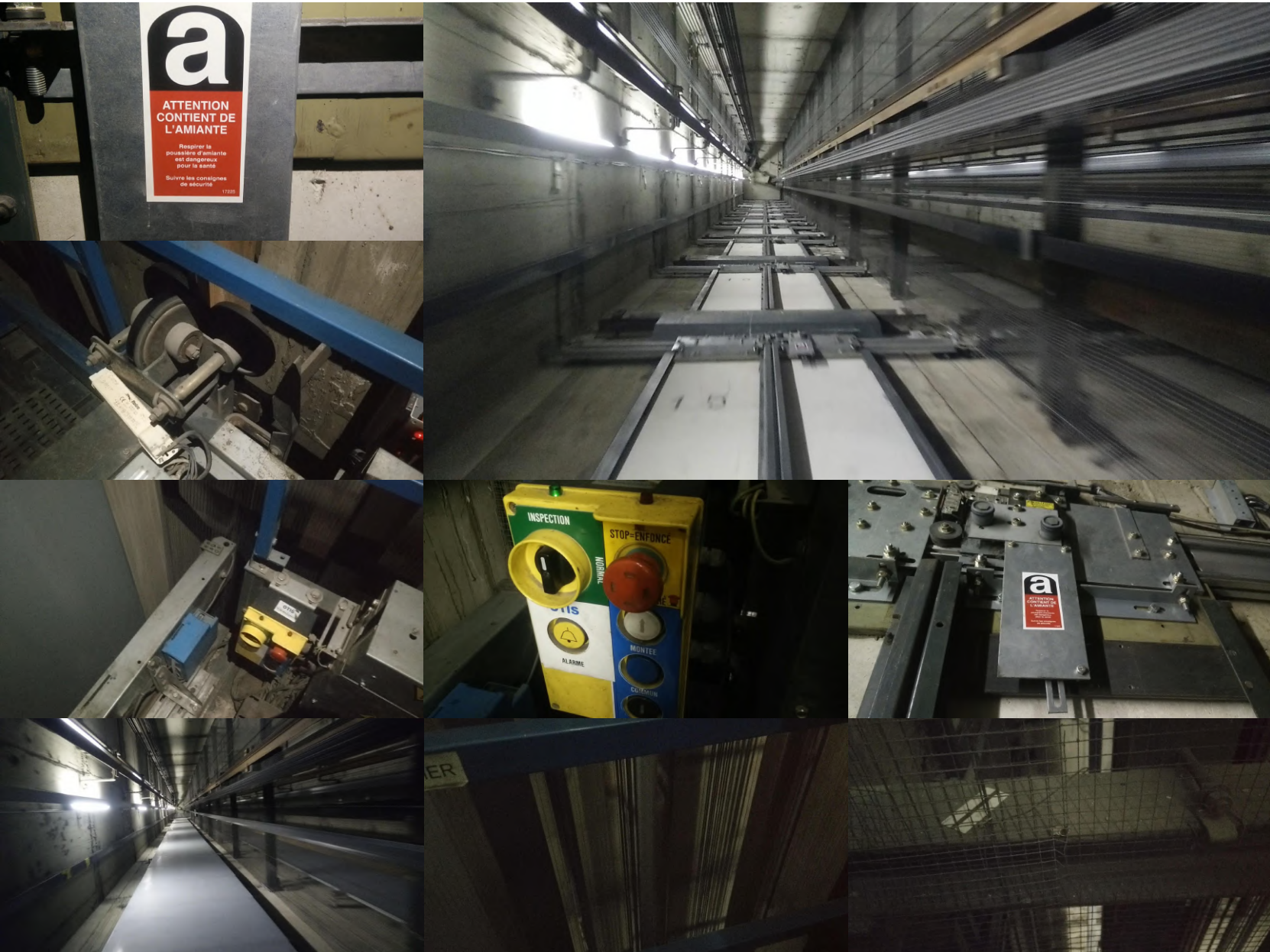


I tried getting on the roof through a ventilation hole but the fan blocked my way. I found a lid opening mechanism with counterweight in the plant room, the motor room next to it was locked





This tower has modernized otis lifts with nice old chime and special food for lift lift surfers



Weird overcomplicated door mechanism



URBEXLIFTS

Railway bridge Urbex and Manual trolley fun



Here is a railway bridge that has trolleys under it. The top of the trolleys is street level, ladders go down from there. There are handles to turn to make the trolley move. The structure looks really dodgy but you realise it's not when you go on it



The only way to get to the pillars is by taking a trolley there. If your trolley is taken while you are on a pillar, your screwed

TecstuffLifts

Here are my pages about last month, done not to many unusual things. But found interesting and epic lifts and of course surfed them!

pages



-1,60m/s 2008 Osma MRL
-2000s generic mod lift



-S+ mod
-Otis mod
-Kone mod
-old Osma

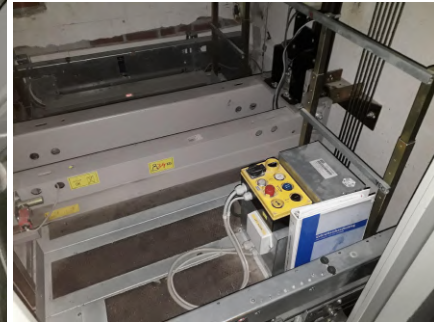


TecstuffLifts



-90s Starlift
and inspection panel

-2nd generation
Ecodisc cartop



-Big MX20
Ecodisc

-Fast and
grotty tower
block lifts
with horrible
lift cartop

AwesomeLiftAdventures

Hi guys! This is a relatively new youtube channel so first we introduce ourselves...

Hi! My name is Dominik, i come from Delft, The Netherlands. I like lifts, Sirens and 80s music. I like to do all kinds of weird things with lifts. But no surfing.... Haha. I dont want to get caught and pay 600 euro

Haii My name is Axl, i come from Den haag, The Netherlands. I like lifts, and.... Yeahh thats about it xD. I am afraid of lifts. The only lifts i go in to are glass generics..... My favorite lift company is Otis because their lifts smell like shit

**Ok so lets start this off with
some old original 60s lifts
(grotiushuis Rotterdam)**



These where originally 60s generics, they have been modded in the early 80s by Thyssen. Still has relay logic, 2 speed leveling

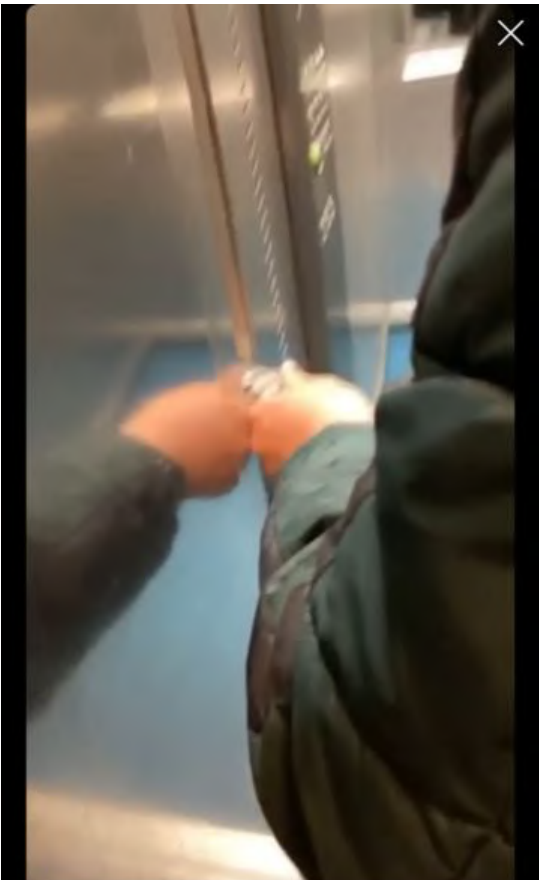


1952 scary looking lift..... AND.....
MODDED BY GENERIC!!!!!!!



**A cheap shitty Thyssenkrupp
isis, WITH A KONE KEY IN THE
SHAFT!**

It was hanging down the shaft ON A
STRING?!?!



Getting it out with my umbrella.....



GOT IT!!!!!!!!!!

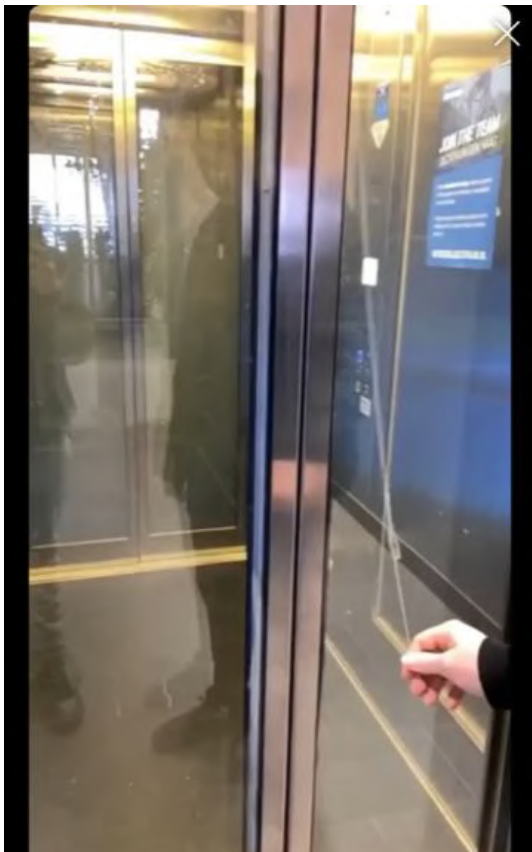


Its the key for the logic cabinet.....

A golden ecodisc, Axl liked this one.

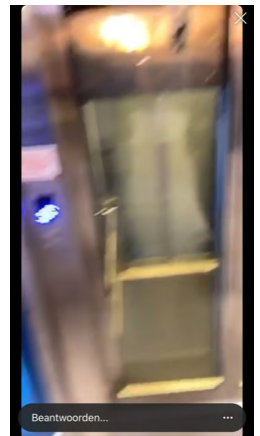


A 2003 gen2! Its really old. But axl was scared to ride it. Its an outdoor lift



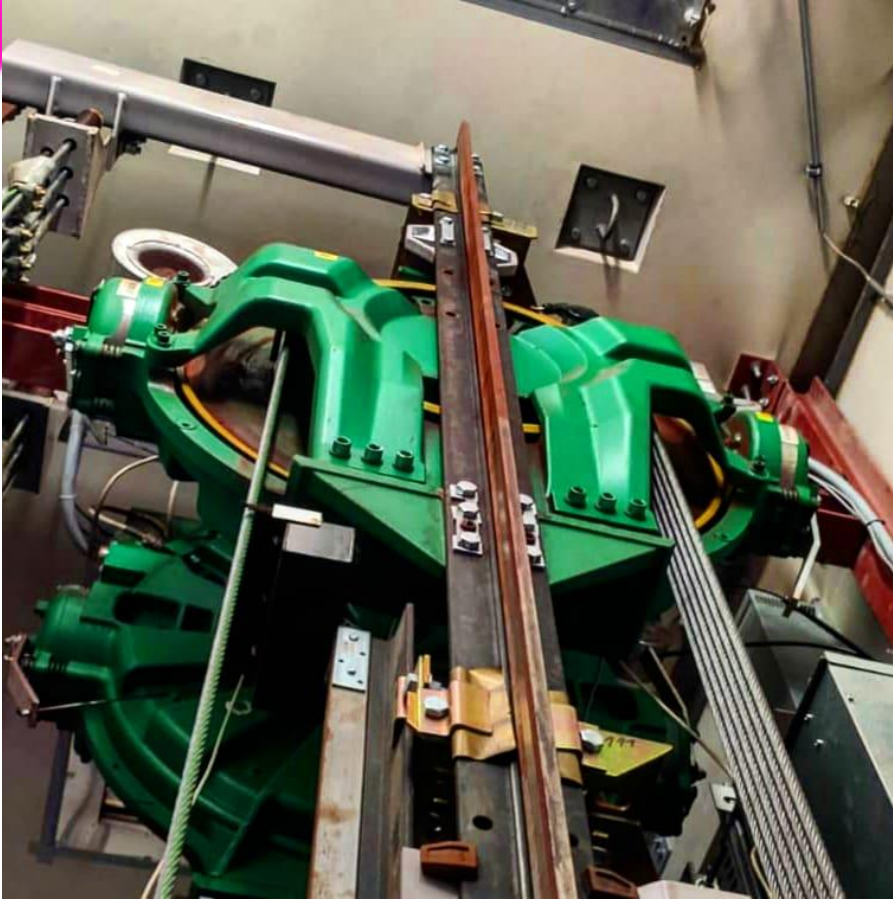
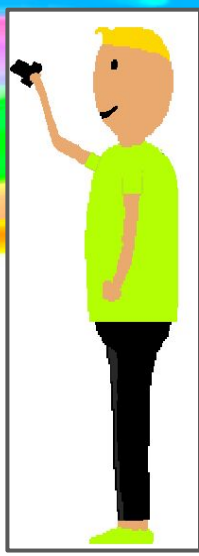
A very weird generic lift from otis.....
IT HAS A STRING ATTACHED TO THE DOOR
ROLLERS!!!! So when i pulled it.....

***It safety breaks
ofcourse...***



***AND... SPECIAL THANKS TO JORDAN
FOR RIPPING IT OFF! WE ARE VERY
THANKFUL!!***

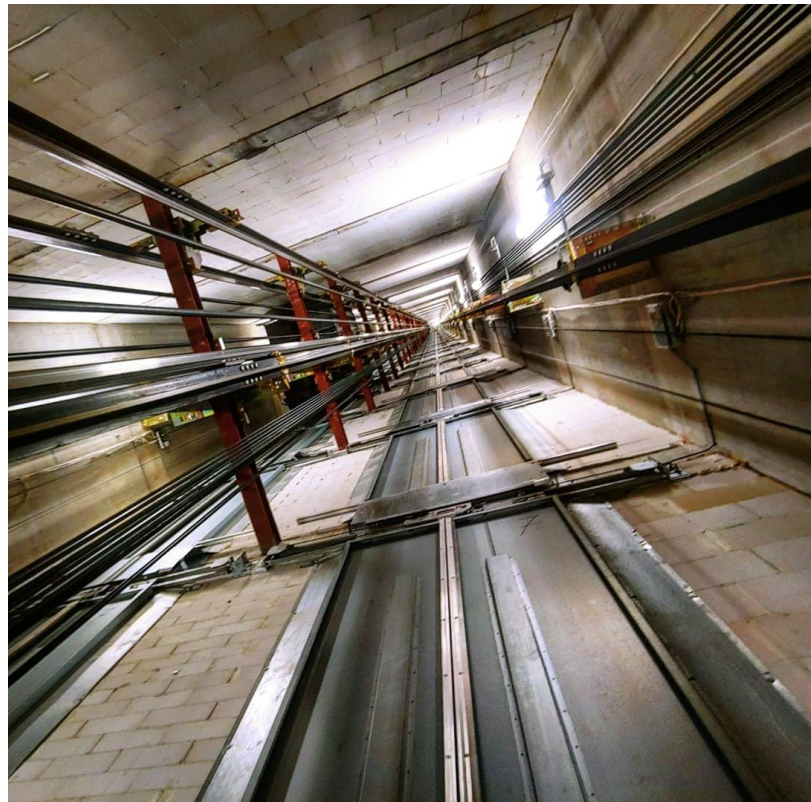
BEN'S PAGES



Lets start off this months page with a nice Kone Ecodisc MX20, the best MRL motor even invented. This pushed the boundaries of what could be done on an MRL. It goes 2.5 m/s and lifts 2000kg in 2:1, or goes 1.25 m/s and lifts 4000kg in 4:1.

This one goes up 40 floors and goes 2.5 m/s, which is under specced and a MR Ecodisc would have been better.

But what is impressive is that the MX20 MRL is capable of such a major lift.

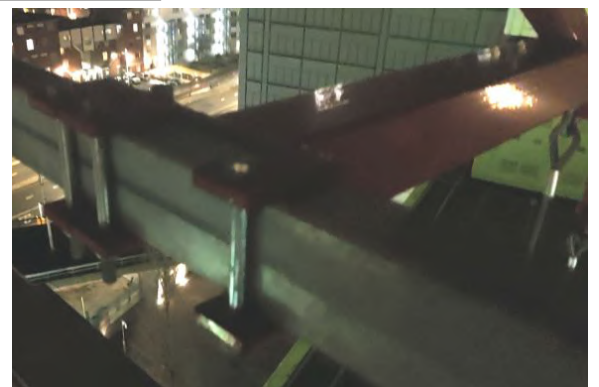
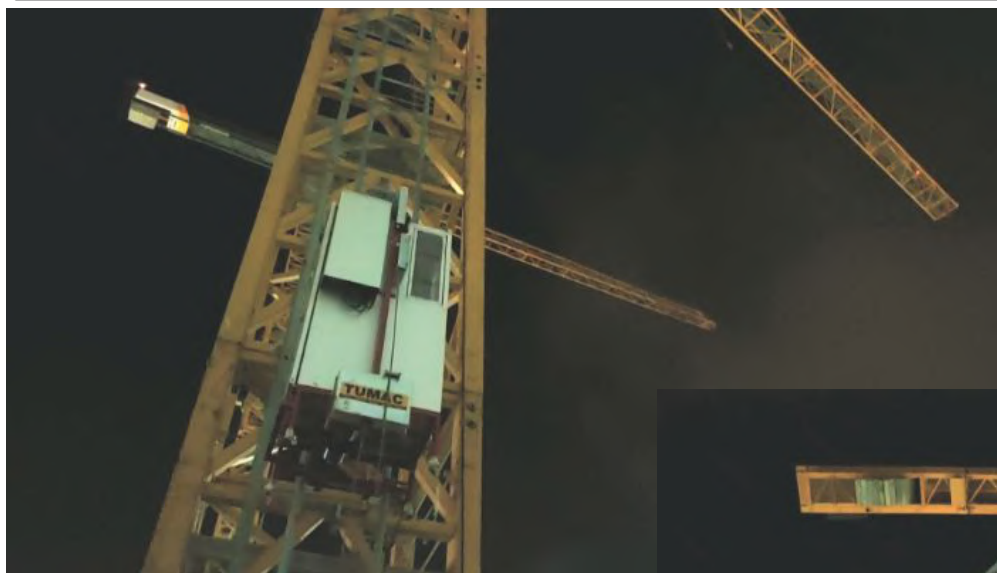
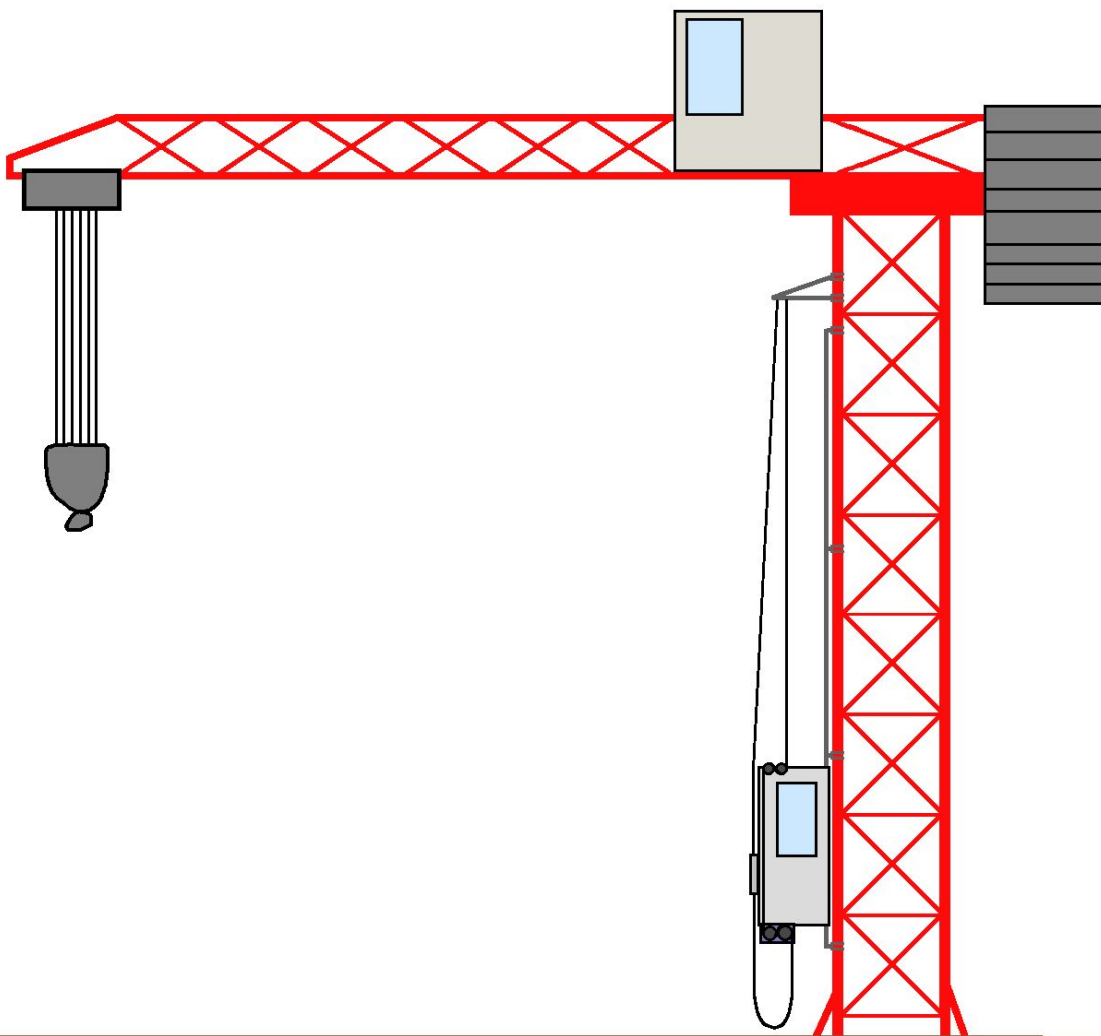


Crane lift

A lift on a tower crane, is this the ultimate in luxury cranes. Well no, it's not.

This lift is so cheaply built it is shocking. The lift is a direct drive lift (not to be confused with a climbing lift), the traction motor is on the lift itself, so the lift is effectively climbing its own cables.

At the top of the cables, they are attached to the crane with a very flimsy metal bracket.



Which sign is better?



Netherlands



Germany

Both show the dog doing a poo in detail. Far more detail than the english version.

For ages I thought the Netherlands dog was really happy to be taking a massive shit. Later I realised that the sign can be read two ways. It could be its mouth with a massive smile, or it could just be its ear.

The Germany dog looks like it is putting more effort into forcing its poo out, and it is constipated, when the Netherlands dog's poo is a lot more runny.



The UK sign is boring



The internet has other examples of no dog poo signs, but I have never seen these in real life

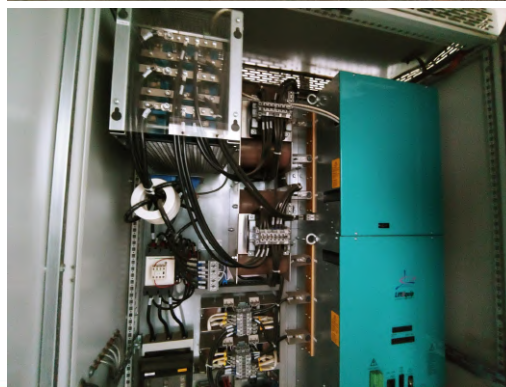


Fun in Budapest

There is always lots of fun to be had in Budapest. From epic old trains to amazing urbexes



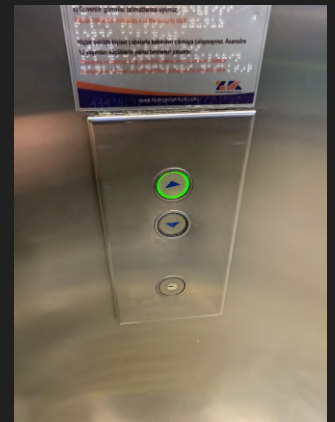
Greenwich tunnel motor room



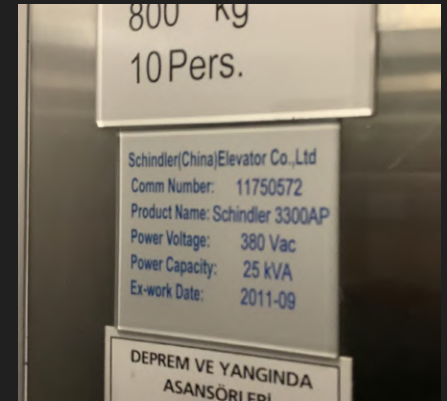
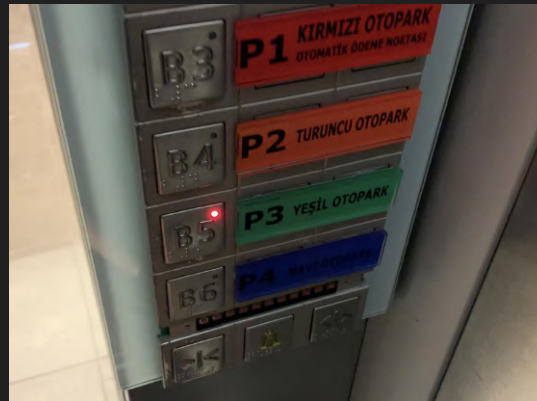
Baran's Pages

Epic Schindler D-Series in Buyaka Mall

D-Series is very rare in Turkey and I think that these are 5400s. They have predoors and they level very efficiently.



In the car park, there are 3 Schindler 3300APs and this is strange since Schindler normally sells the European model (3300EU) in Turkey



Baran's Pages

Schindler EuroLift with upside down buttons



When I first saw the up call button, I thought that it needed to be replaced in the past and at that time, there were no down call buttons available as a spare part, so they just got an up call button and placed it upside down. But when I entered the lift, I noticed that the alarm button was upside down too. And when I exited from the lift, I noticed that the down call button was also upside down. I absolutely have no idea why did they put the buttons like that.

Baran's Pages

Weird installations of Otis in Turkey - Part 2

Thankfully, Otis didn't leave us only with usual lifts this month too. Here's an Otis Hydraulic with Gen2 branding.





Here's some lift I surfed, a lot of crap generic lift here. But it was very fun



Brand new FUJI Lifts at Hospital Building. This lift has a speed of 1 m/s, very slow for a building of 10 floors,



Double lift shaft. Sadly the lift is Generic



Sanyo MRL Lift shaft



Deep-deep lift shaft. This lift shaft taken from 29th floors. This building use 3 m/s Thyssenkrupp



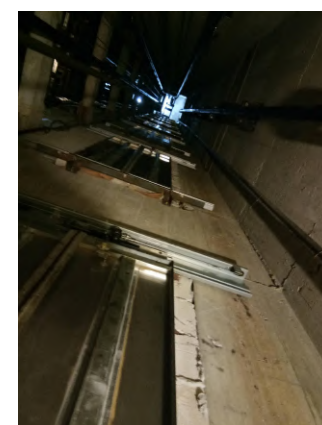
KONE Minispace car top



SIGMA MRL Lift at Train Station. This lift looks like Ecodisc. Sigma is the subsidiary of OTIS Lift Korea. This lift use OTIS button too!



Nice built Generic Lift. This lift located in the Mosque



Shaft view from 2nd floors. Lift shaft here doesn't have shaft lights



KONE Ecodisc indicator display



KONE Ecodisc button



Crap SJEC Lift button



The Park Shopping Centre Car Park



New Train Station

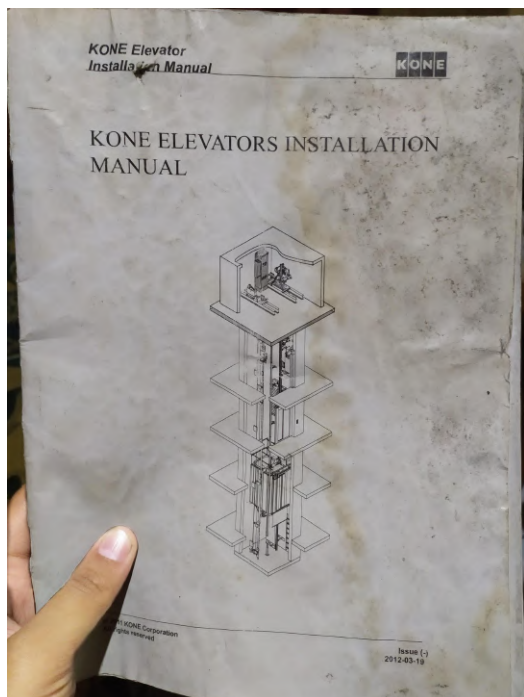


Economy Class intercity train



KONE Minispace Inspection Control in Asia

I got this book from the KONE Ecodisc MX-10 lift. The condition is pretty good, a little dirty. And I saved it for collection



The front cover of the book

KONE Elevator Installation Manual

List of contents

1. GENERAL	2
2. SAFETY AND ENVIRONMENT	3
2.1 General safety	3
2.2 Electrical working safety	3
2.3 Danger and personal protection signs	3
3. STANDARD INSTALLATION TOOLS	6
4. BASIC STRUCTURE AND FUNCTION	9
4.1 Machine	9
4.2 Control panel	10
4.3 Overspeed governor	11
4.4 Safety gear	12
4.5 Brakes	13
4.6 Buffers	14
4.7 Elevator car	15
4.8 Elevator doors	16
4.9 Counterweight	17
4.10 Suspension ropes	18
4.11 Car and counterweight guides	19
4.12 Signalisation and landing call station	19
5. Installation Prerequisites	20
5.1 Site requirements	20
5.2 Unloading and distribution	20
6. INSTALLATION PROCESS	22
7. INSTALLATION QUALITY CONTROL	23
7.1 Ride quality	23
7.2 Tidiness	23
7.3 Finishing	23
7.4 Elevator car	24
7.5 Elevator well	24
7.6 Doors	24
7.7 Pit area	24
8. Handover	25
8.1 Inspection before handover	25
8.2 Handover form	25

© 2011 KONE Corporation
All rights reserved (25) Issue (2) 2012-03-19

Table of contents page

KONE Elevator Installation Manual

Danger signs		Personal protection signs	
Electric shock		Safety helmet	
Risk of falling		Overall	
Magnetic field		Dust mask	
Risk of fire		Hearing protection	
Corrosion dermatological risk		Safety shoes with ankle protection	
Entry prohibited		Safety gloves Rubber gloves	
General hazard warning		Fall prevention equipment	
Suspended load		Safety goggles	

© 2011 KONE Corporation

KONE Elevator Installation Manual

3 STANDARD INSTALLATION TOOLS

Part	Task/equipment and instruction	Figure
1	Screw driver	
1	Hexagonal key	
2	Removable socket	
1	Spanners	

© 2011 KONE Corporation
All rights reserved (26) Issue (2) 2012-03-19

KONE Elevator Installation Manual

3 STANDARD INSTALLATION TOOLS

Part	Task/equipment and instruction	Figure
1	Hand roller	
1	Small cutter pliers Removable vice jaws	
1	Spring rope clip	
1	Adjuster square	
1	Feeler gauges	
1	Shaped wedge	

© 2011 KONE Corporation
All rights reserved (27) Issue (2) 2012-03-19

KONE Elevator Installation Manual

6 INSTALLATION PROCESS

Installation order	Installation item
Shaft planning jig	Assembling shaft jig Laying shaft lines
Guide rail	Installing guide rail brackets Installing guide rails Aligning guide rails
Landing door	Installing landing doors Inspecting landing doors
Machine room	Installing machine Aligning machine Installing control panel Installing overspeed governor Electrification signalling
Pit	Installing buffers Installing other components in the pit
Car sling	Installing car sling Installing safety gear Installing guide shoes
Counterweight	Installing counterweight frame Installing traction rope
Rope	Installing overspeed governor rope Installing compensation chain
Car	Installing car wall Installing door operator Installing car top connection box Installing final limit switch Installing load weight device
Electrification	Installing shaft wiring Connect safety circuit Installing travelling cable
Scaffolding	Dismantling scaffolding
Inspection drive	Elevator inspection drive
Shaft	Adjusting shaft signalization
Car decoration	Installing car decoration
Commissioning	Elevator commissioning
Elevator safety inspection	Safety function testing

Installation process will have some adjustment according to different method and site facilities.

© 2011 KONE Corporation
All rights reserved (28) Issue (2) 2012-03-19



Long way down..!



31 floors Hospital Building. I got caught after I finished roofing with my friend. Bruh...



Roof of The Park Shopping Centre. Very dangerous emergency exit door because the door only can opened from outside



Hartono's Shopping Centre roof. This is the cleanest roof I have ever explored

LIFTINUM

- Here are some great Mitsubishi GPQ lifts. These lifts are now 17 year old as it has been installed since the MRT has opened in 2003.



Ruined 1990s KONE lift with lots of replaced buttons.

The condition of this lift is horrid. The vocabs are obviously made by TTS. The grammar is also very bad, such as when it says lift is going down, it would say "Lift down", which makes it very annoying and cheap.

LIFTINUM

LAND OF MITSUBISHI LIFTS



Safety Breaks Lifts Page

In my local shopping centre there are some OTIS Europa 2000's which we're quite loud and dodgy and fun to ride however in 2019 both lifts went out of service and no longer work.

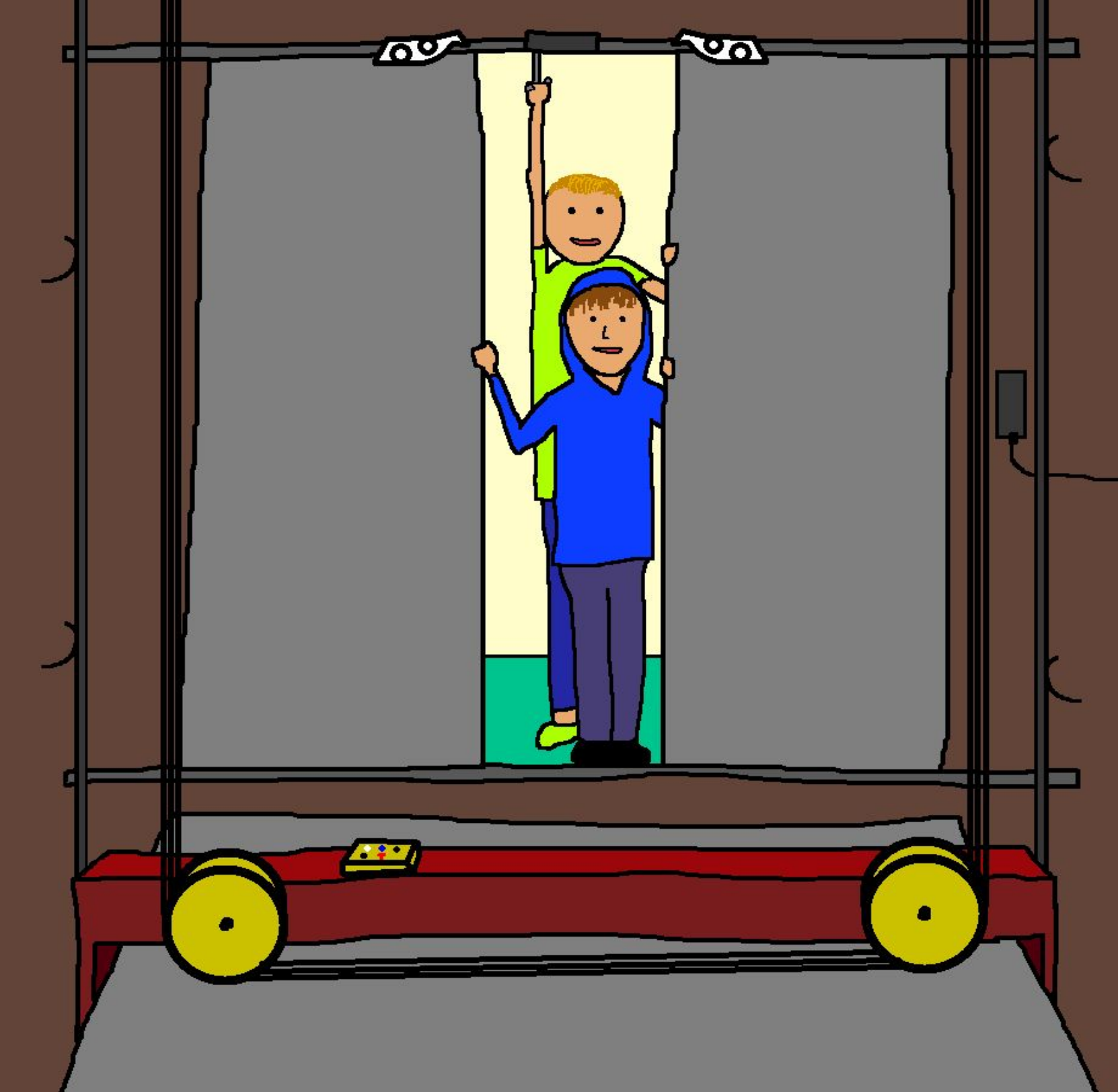
The left lift has been out of service since March 2019 whilst the right one has been out since September 2019.

The other local shopping centre has some generic lifts and for generic lifts are actually fairly efficient there is two 1M/S traction ones and 2 Hydraware Hydraulics. These lifts replaced some OTIS lifts in 2015 and at the time

I hated them however now they are my favourite generic lifts







THE END