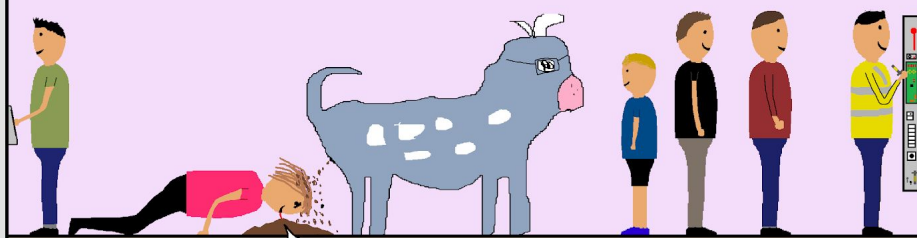


MOO COW DIARRHOEA TASTING CLUB!!!



THIS TASTES SO GOOD!



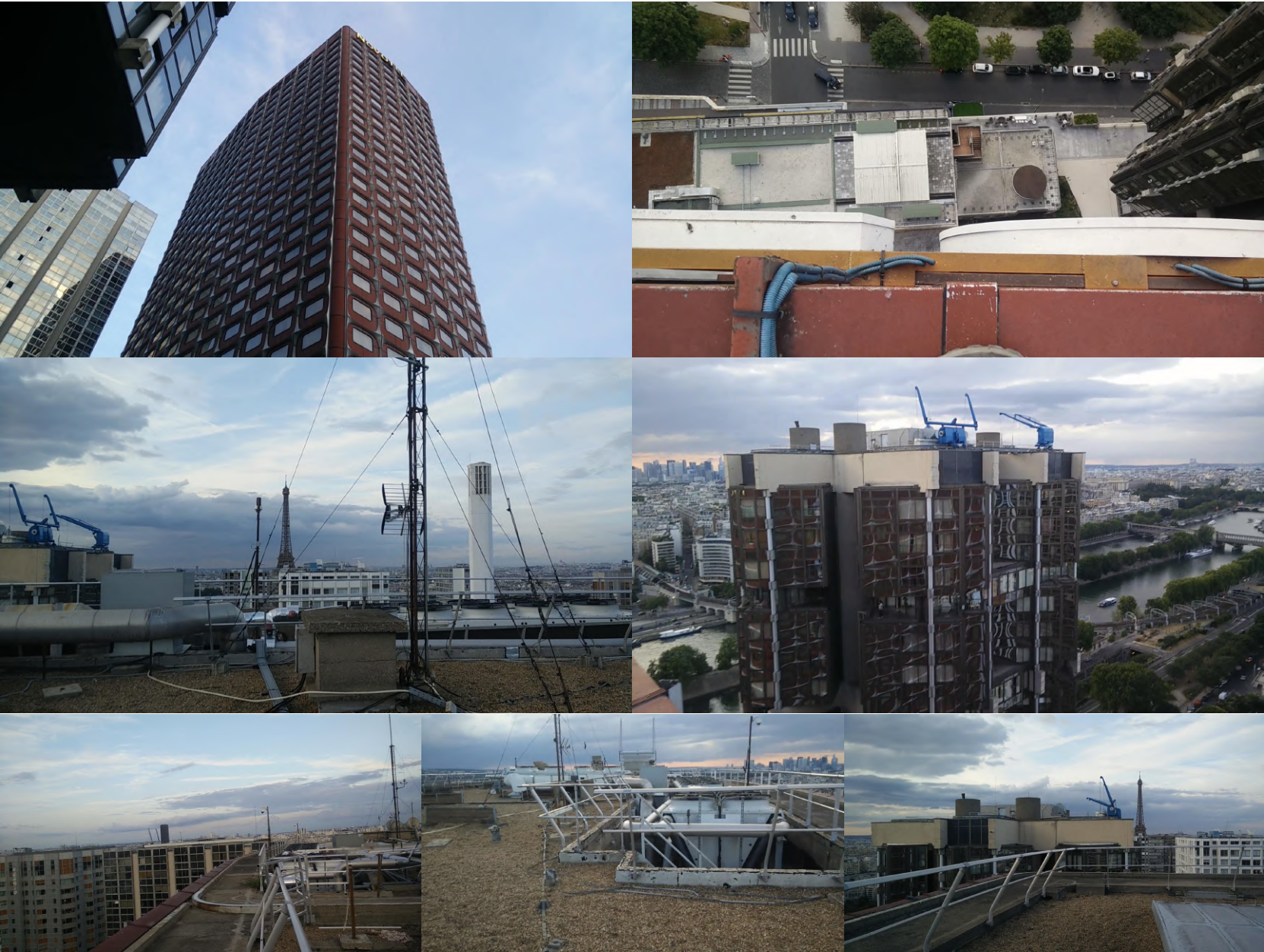
MOO COW DIARRHOEA TASTING CLUB!

Moo Cow Diarrhoea Tasting Club MAGAZINE! (MARCH 2020)

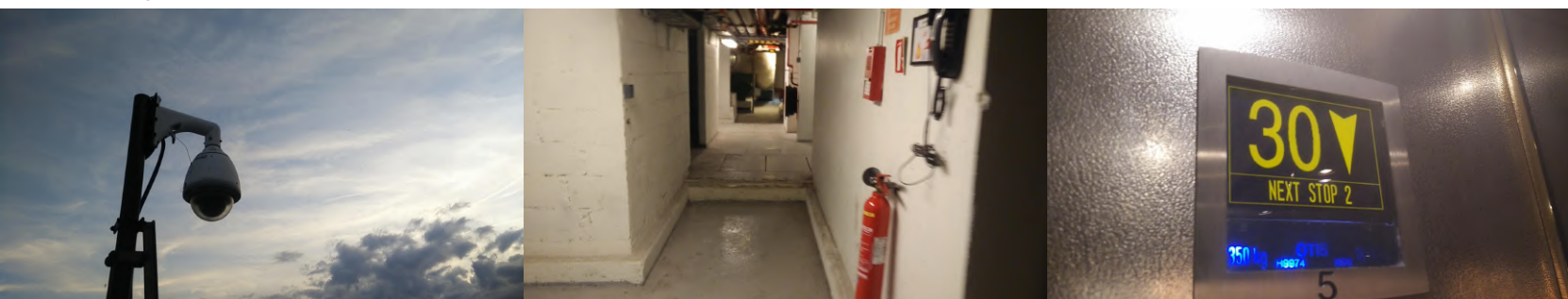
URBEXLIFTS

Surfing epic lifts in Paris

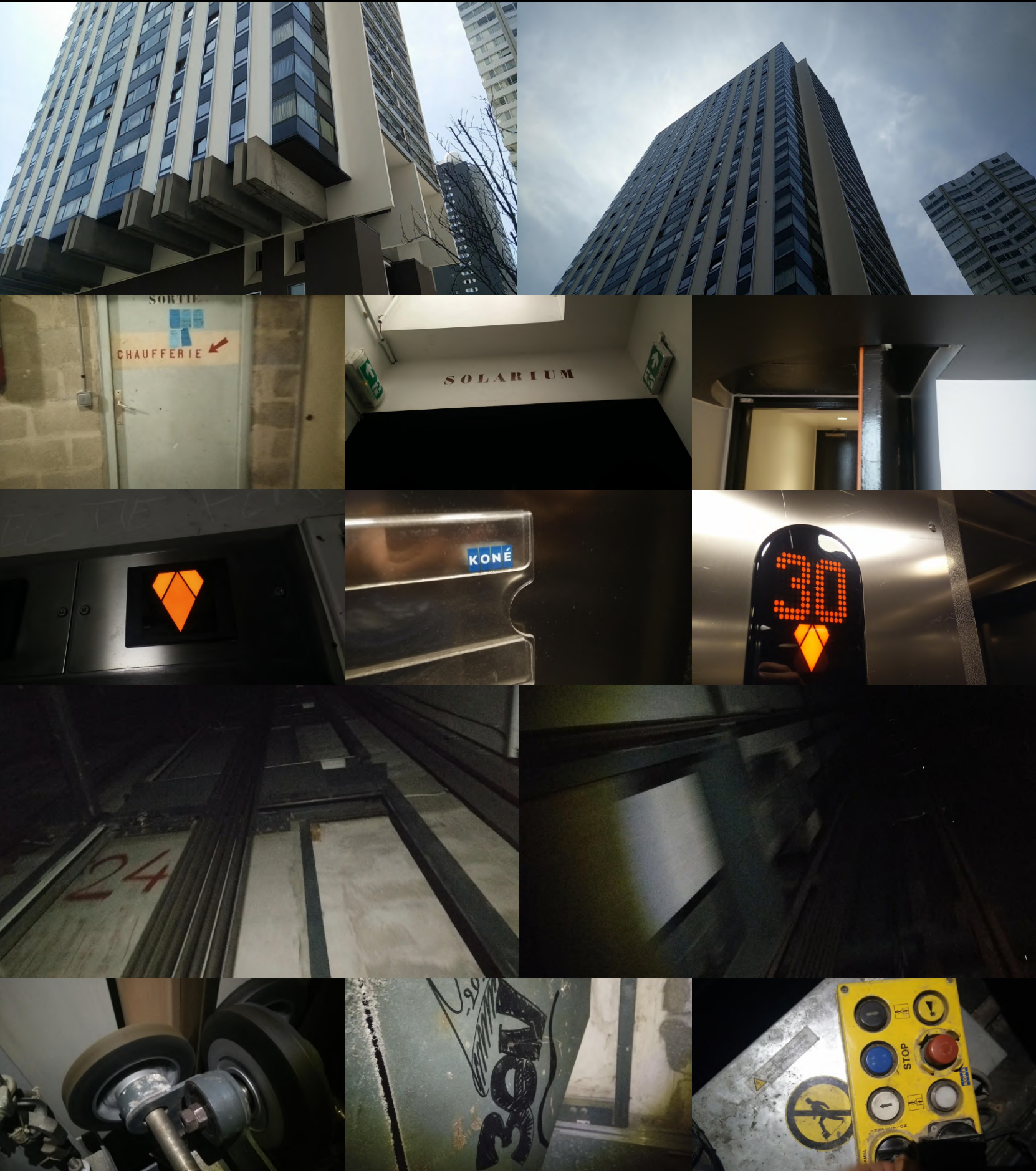
Let's continue the Paris lift surfing adventure by exploring even more towers. I was very lucky to get on top of the Novotel tower.



This roof was very nice but I regret not surfing the lift as it was pretty fast but it had cameras watching



Now to the next tower. It looks very nice from the outside and it has nice lifts modernized by ecodisc



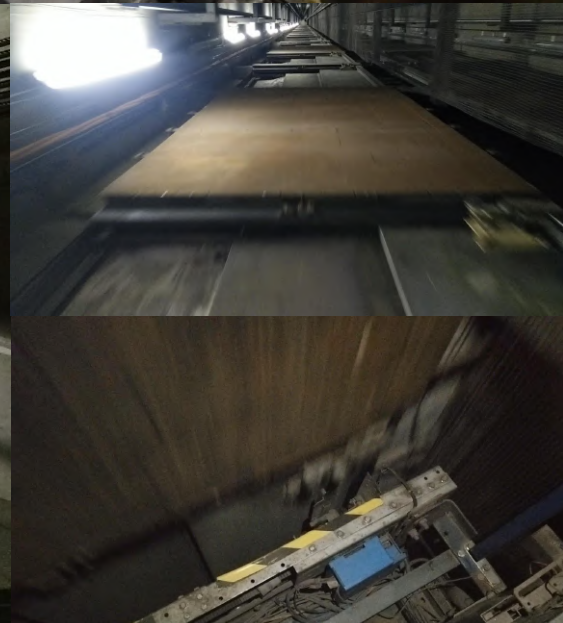
This tower is called "Panorama" and has windows on top. How can this be the only tower here with this nice feature?



This is the release mechanism of the additional fire doors protecting the lift shaft. Most of the tall towers in Paris has these doors



Now to a tower with a an Otis lift in very nice rusty lift shaft. It looks completely amazing



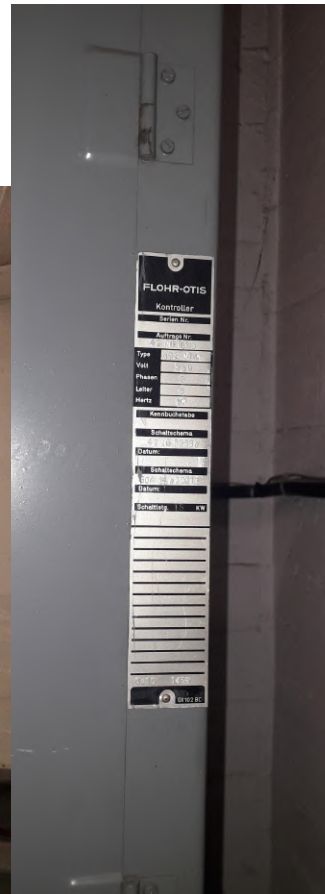
Let's start off with an original
EPIC 1969 Freight Flohr Otis



The big relay logic cabinet

The Motor is
hanging next
to the liftshaft

This lift has a big
lift car and has no
innerdoors,
everything about
it is original.



TecstuffLifts



Kone Prospace with belt cables
Kone's counterweightless lift for very narrow lift shafts. It has balancing weights at both sides and 2:1 cabling.

with LCE logic, that still has the repeater board attached for no reason



<< Motor is behind this cover



TecstuffLifts



First Generation MX10 Ecodisc MR

Tower block lift motor room with
"Kasper" machines (top right corner)

Schindler M-Series

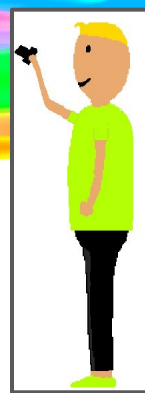


Kone TMS600



**Original 1960s
Schindler
with awesome
relay logic**

BEN'S PAGES



This month has been caos for obvious reasons. The world has gone crazy.

London Underground was interesting as very few people were using it. It made for some good filming opportunities.



DLR GOLD CLASS

NEW! - The DLR now has GOLD class. Gold class is located at the front and back of DLR trains and is reserved especially for gold rated citizens of the United Kingdom. Only people who do specialist star rated jobs get to travel in GOLD class. Only a very few limited number of jobs entitle you to the privilege. These jobs include train drivers and guards, and tower crane inspectors. As I am an overnight crane inspector, I am classed as a star rated citizen, and I am entitled to the GOLD class deluxe edition privileged addon to my oyster card. GOLD class is amazing, no longer do you get tourists or other people fighting you to the front seats. Also, as well as GOLD class, there is also PLATINUM class located through the door at the end of GOLD class. PLATINUM class users get to feel the wind in the hair while they stand on the coupler. Sadly PLATINUM class has a heavy price. You have to do 2 weeks of unpaid work every time you take the privilege of using it.



Baran's Pages

Epic Otis Compass Gen2s in an office building

These lifts are my first destination dispatch lifts and just like most of the Gen2s in Turkey, they level pretty efficiently



Please enter your destination



Take car A



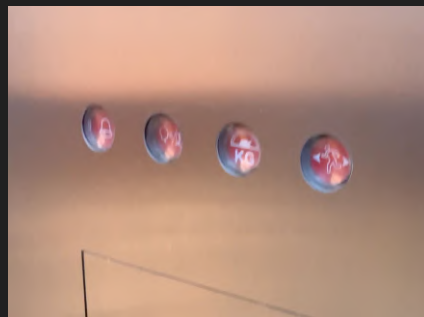
Otis eView display



List of next stops



Usage instructions



Indicators that are probably only used in high rise lifts

Baran's Pages

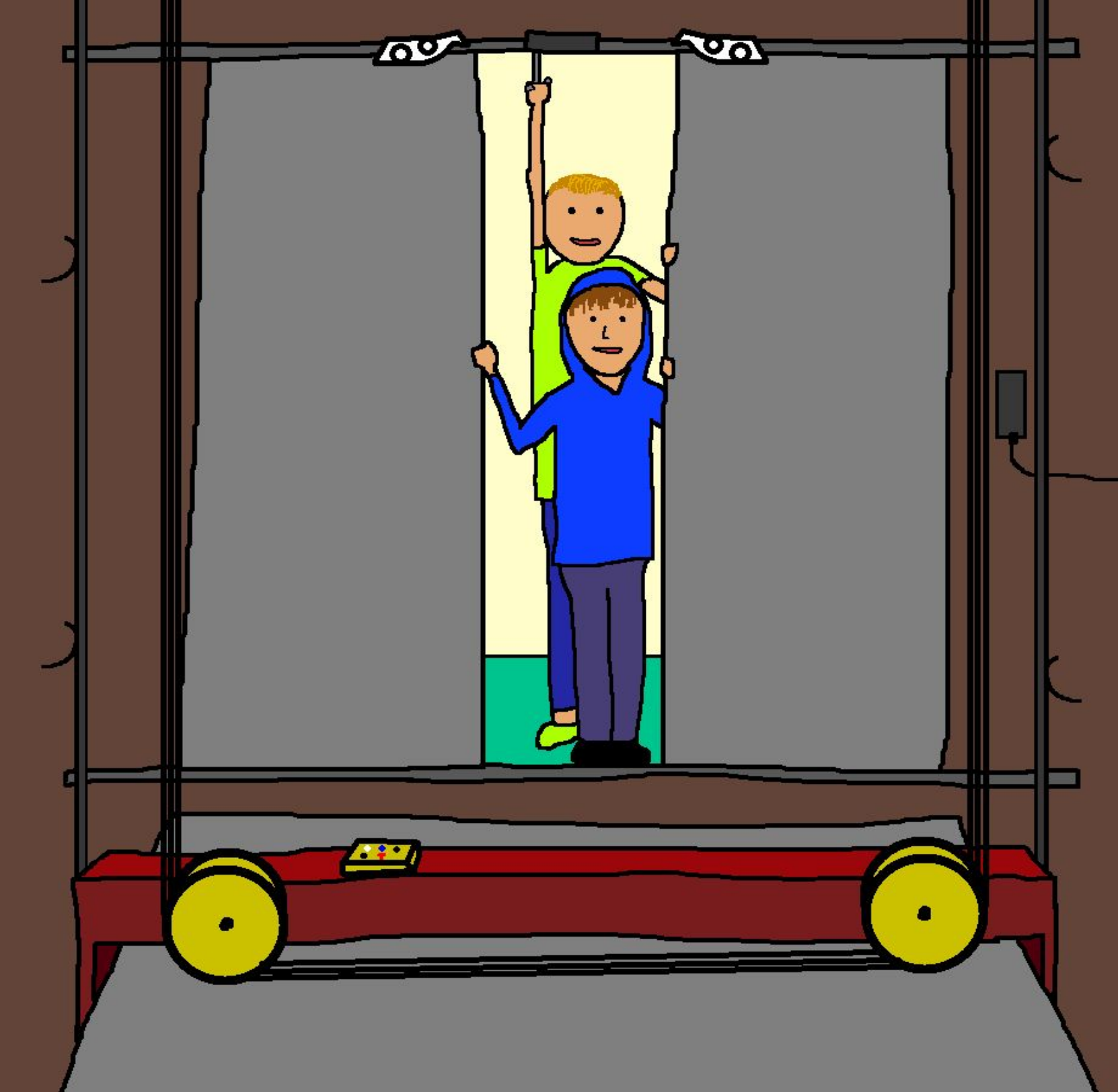
KONE MonoSpace with KSS 570 fixtures

Our school's robotic team entered a competition this month and in lunch break, I started hanging out to search for lifts and I found my first KSS 570. These fixtures and KSS 670 is rare in Turkey and Kone usually installs lifts with the KSS Design or KDS 300 fixtures.



Photos from the competition (FRC)





THE END