

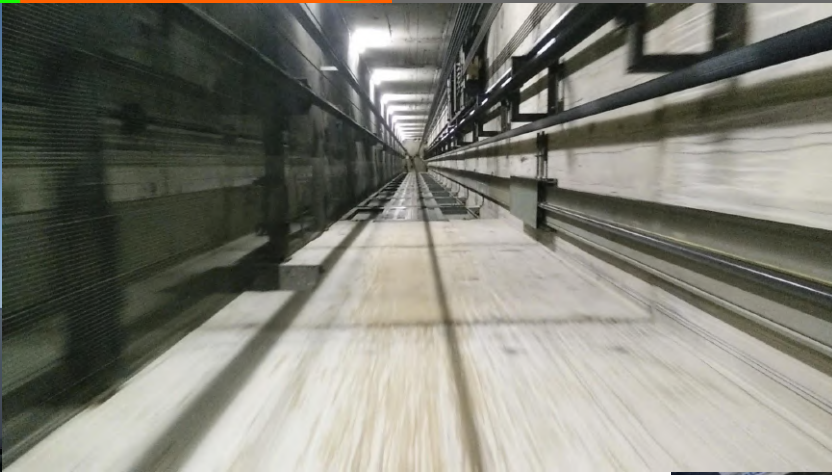
URBEXLIFTS

Surfing The Tallest Residential Lifts In Paris



46 floor Ecodisc YESSSS! Epic looking old lift shaft YESSSS! Enjoy the feeling of this building!

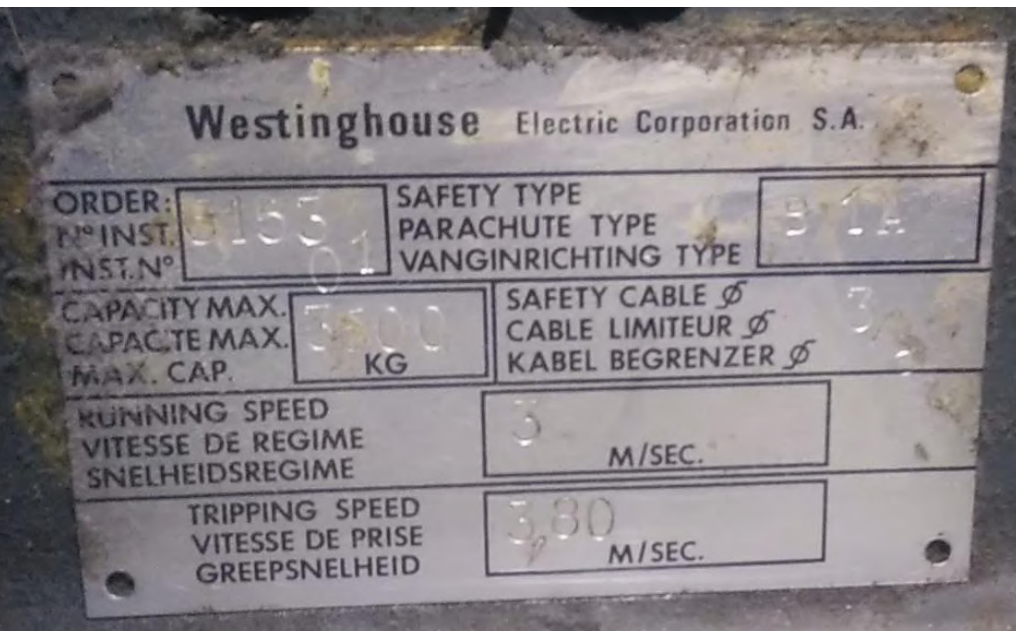




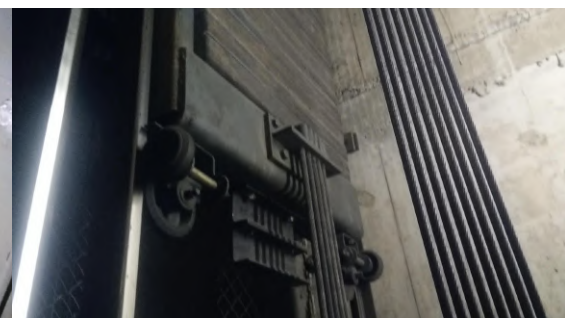
This 36 floor tower has separate lifts for higher (from 22) and lower floors. I couldn't be bothered with surfing the lower lifts



40 floor Schindler M series! ..are sadly a bit slow here, but they still run well compared to their age



Nice exposed wheels, not so safe riding at full speed but you know my relationship with safety



TecstuffLifts

Otis 2000 VF lifts from 1996 pages

OTIS

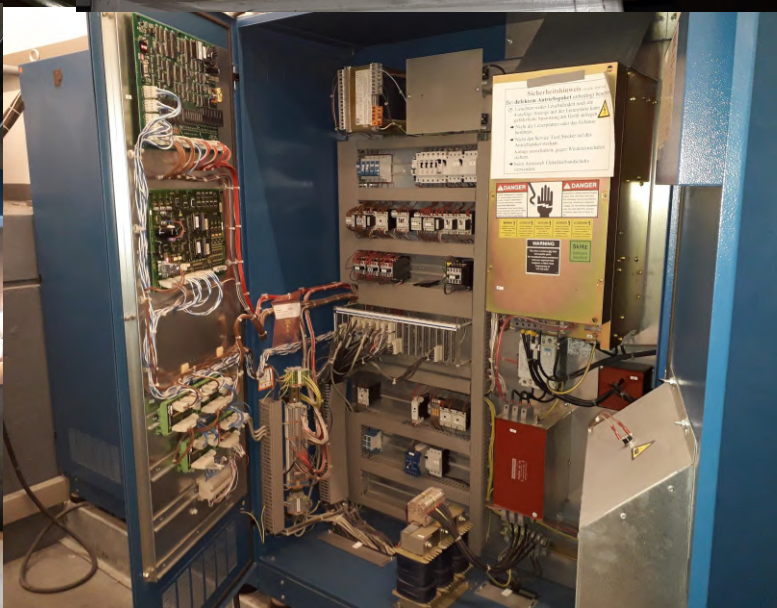
Here are a few posh Otis 2000 VF lifts. These are full proper Otis 2000s, they are very well build lifts (not like modern Gen2s), they are semi intelligent and predoor.

These lifts also have a really nice harsh acceleration

The lift layout in this building is quite interesting, they're 2 fireman lifts that serve all 21 levels and 8 main lifts that only go from level 2 to level 20, but one of the lifts does stop at level 1 but it needs a key. Also there's a little Otis 2000 Hydraulic serving the car park level.



These lifts are in a open lift shaft and have a glass ceiling but sadly I didn't took a picture of the car interior. They have capacitive Schäfer fixtures inside.



Specifications:
Speed: 2.5m/s
Levels :21
Capacity: 1.2 ton
Type: 2:1 traction
1 main lift group has 4 lifts.

TecstuffLifts

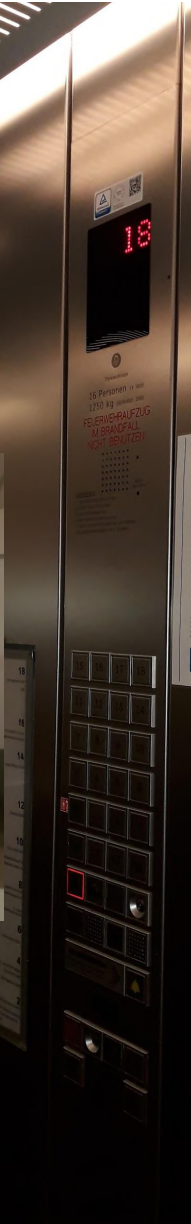
Old and new Thyssenkrupp lifts



old and new logo



thyssenkrupp



**Big 90s
Thyssen
lifts with
TCI logic
1m/s
With
unusual
car button
layout**



**Mid rise
Thyssen
lifts with**

**TCM logic.
They go
2,5m/s for 19
stories
2:1 roped with
double wrap at
the drive sheave.**

TecstuffLifts

BIG motor rooms with little motors!



Schindler



Here are two lifts that have been modded with belt cables. At the top a mod from Schindler and bottom an Otis Gen2 in a motor room. The lift cars are original and heavy duty but the lift motors look very small in the big motor room. Also the cables look very thin and delicate.



OTIS



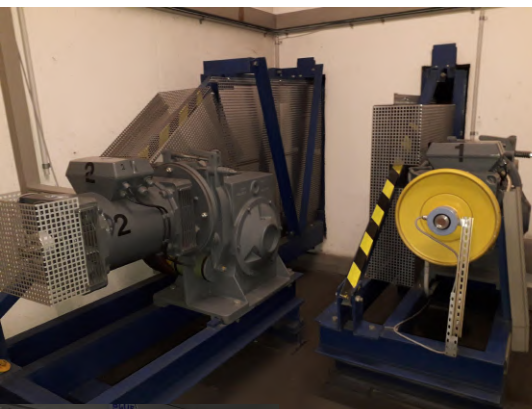
TecstuffLifts

Random lift motors!

Wittur
MRL
motor



- Large and small traction machine made by Kasper ↑
- 80s Generic with relay logic and liftmaterial motor →



- More generics with Thyssen/Liftequip and Ziehl Abegg machines.
- A interesting Osma lift with a Ziehl Abegg MRL motor configured as a bottom drive lift. ↓



NOLANEVATOR

LIFTS

AROUND CONNETICUT AND MORE!

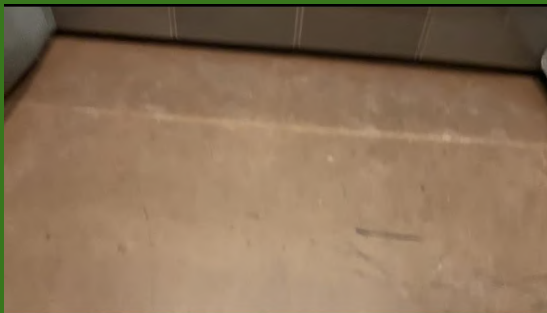


/NOLANEVATOR



New Profile Picture

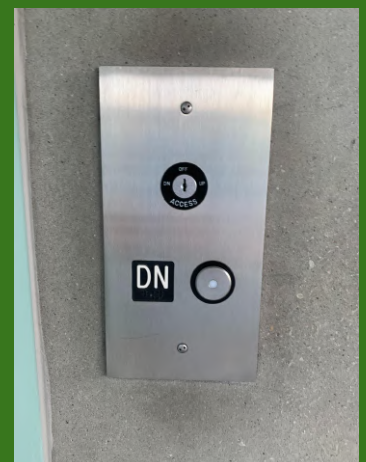
Hi, I'm Nolan and Welcome to my Magazine slide! Make sure to subscribe to my YT channel!



BIG AND TALL OTIS
(mod. Thyssenkrupp
Endura) with White
Buttons!



Generic, but nice
Glass KONE lifts @
Fairfield METRO
station (Metro North)



BEN'S PAGES

This month let's take a look at places I have been to by boat. All of these places can not be accessed without a boat.



HERNE BAY PIER



STROOD SUBMARINE



HOO AND DARNET FORTS



Milo's transport page

In 2019 the last PVL of Go ahead was withdrawn PJ02RCU (PVL284)



LDP206 in it's glory days
It has since been retired and preserved.



128 on it's last few months with arriva. The buses moved to 173 and or withdrawn. The 173 went to stagecoach.



LX03BXF on it's last day of service in which there was alot of enthusiasts on the day

Milo's transport news

Transport for wales

Class 769 and class 230s under testing

Southeastern

Class 707s confirmed for SE

Networkers still smell of piss

Grand Central

Mk4s in the stunning livery with the 90s

Euston to blackpool service delayed until 2021

Northern

Class 321 is gone from northern

So is the 322 i think

South western railway(i still prefer when stagecoach operated it

Island line trains have been built

Transport For london

Buses are going back to front entrance again

They applied for a bailout

Crossrail delayed (again)

Free travel scrapped

New electric buses entering service more and more

First electric enviro 400 will be on a motorway route

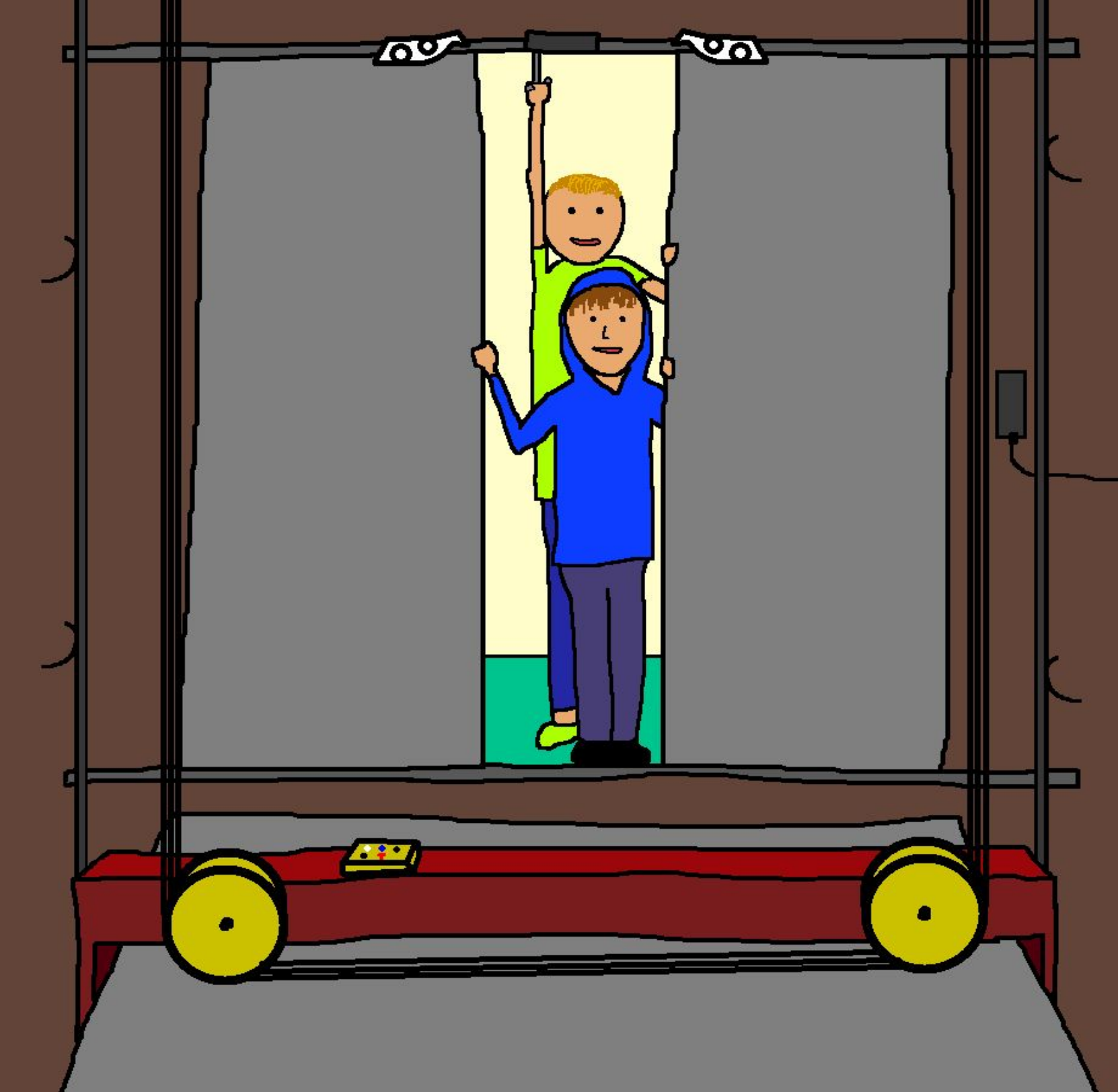
East midlands railways

First 170s in the stunning new livery

180s now on EMR

Ex LNER 43s on EMR





THE END