

# Moo Cow Diarrhoea Tasting Club MAGAZINE! (AUGUST 2020)





Small but nice Schindler from 1978 with ETALUX floor indicator



Here is a nice 1978 Schindler with relay logic, but **something important is missing, can you spot it?**

Yes, this one doesn't have a floor selector in the motor room. It uses roller switches in the shaft instead. Also the lift hoisting machine has been replaced around the 2000s with the overspeed governor.

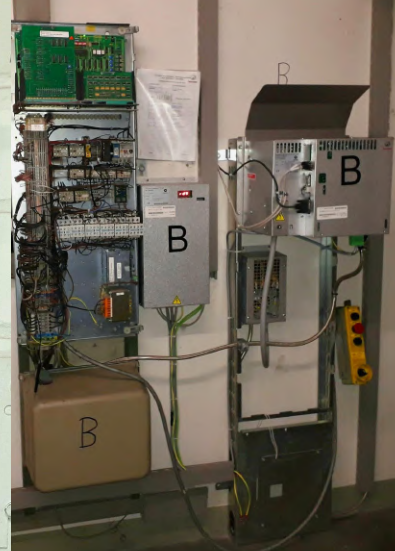




### Schindler S Series from 1992 with Miconic B controller



Here are some epic Schindler S Series with full intelligent leveling, they go **1,5m/s** for this 6 floor building, which is a good speed. They have been slightly modded but still run very good. They are bottom drive 2:1 traction lifts with classic Design S fixtures.



The **Miconic B** logic with **Variodyn 50 br.** The VVVF drive has been added later probably due to efficiency reasons. Those lifts used to have pulsing drives (VVD) which wasted a lot of energy into heat.





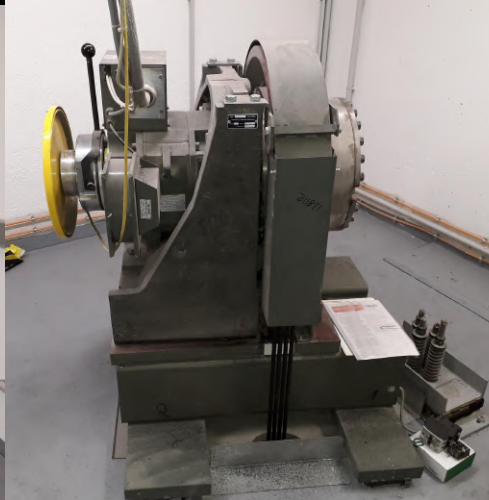


- Some **5500s** with destination dispatch.

- Interesting **Schindler P420** planetary geared traction machine (manufactured by ZF)

- old Schindler machinery replaced with Ziehl Abegg

- old **60s Schindler**





# BEN'S PAGES



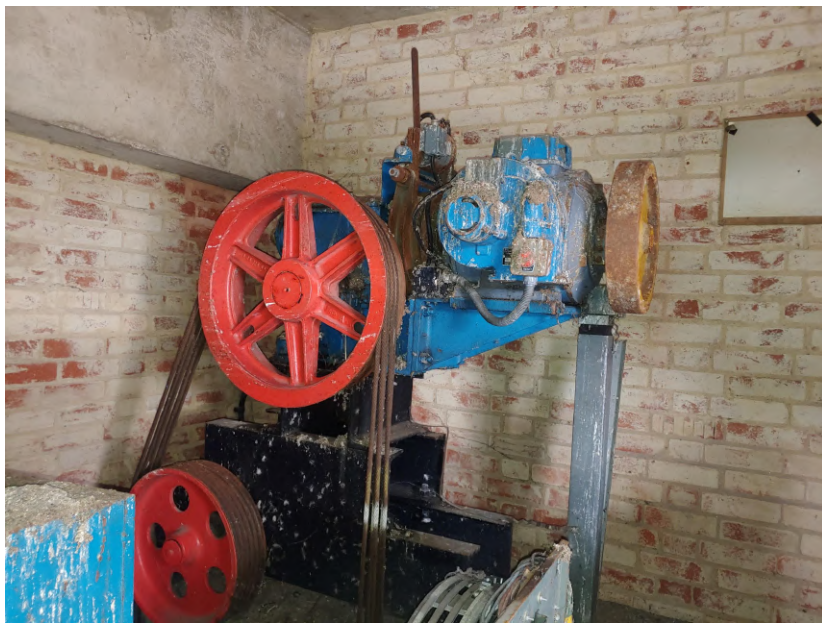
Relaxing on the roof of a tower where there is a nice cold breeze. The best thing to do in the heat wave.

Below: Cologne Bonn tram system. My favorite tram system in Germany.



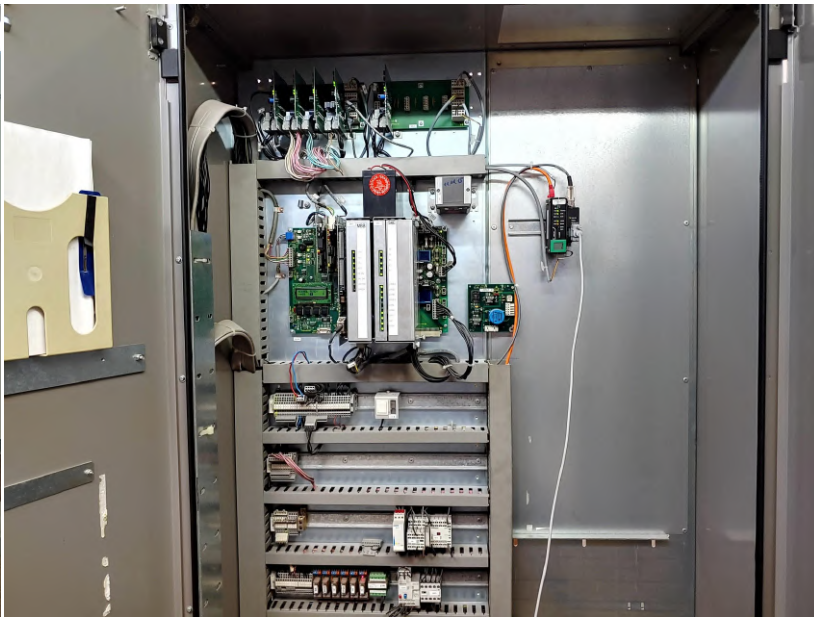


# ABANDONED SCHINDLER





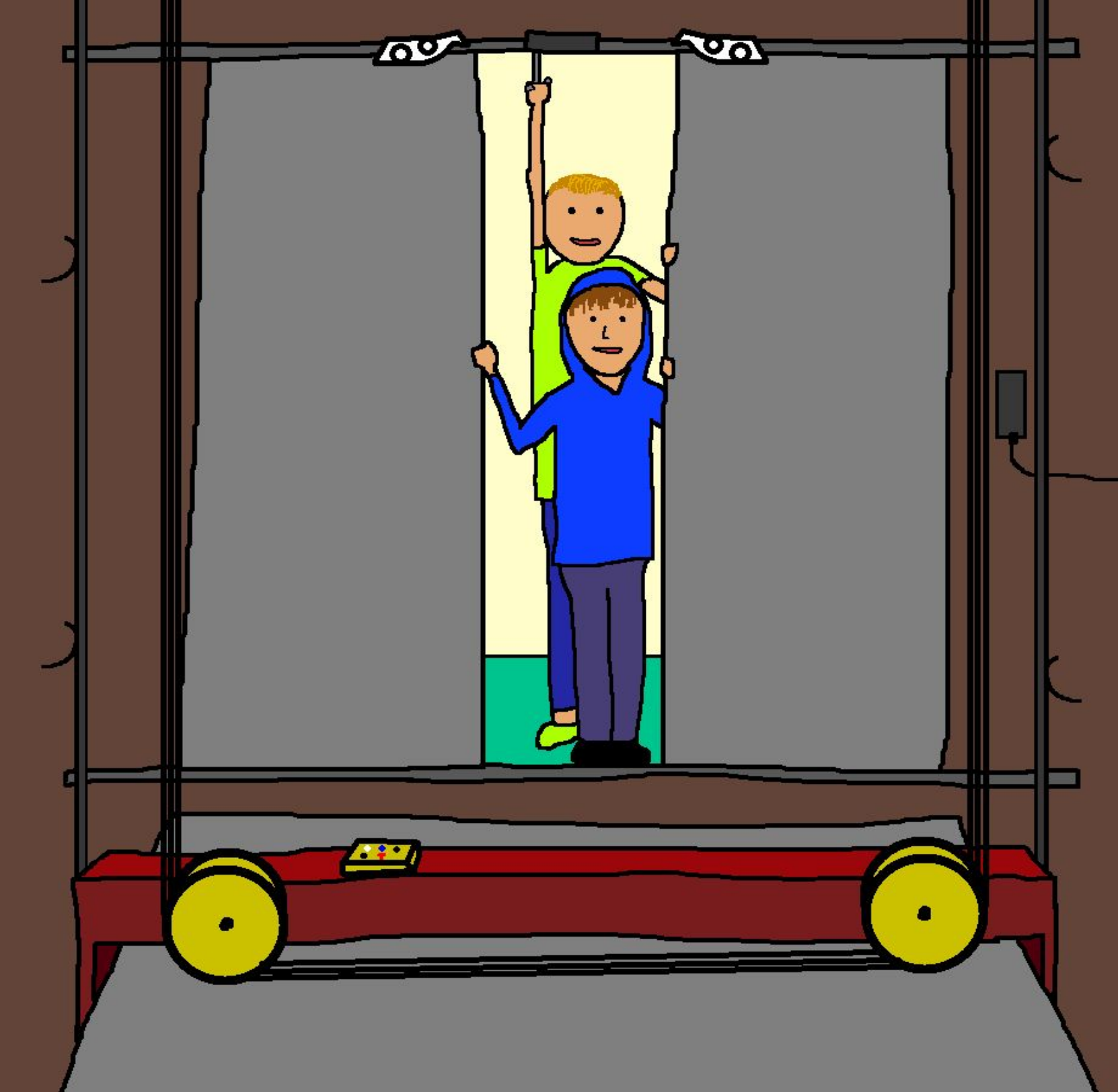
# 4 m/s Schindler Miconic motor room











**THE END**