

MTA EXPLORER'S PAGE

A brief look at an elevator made by the Gurney Elevator Company.

In many pre-WWII buildings in New York City, lie old elevators, many installed by three major companies. These include the Otis Elevator Company, A. B. SEE Elevator Company, and finally the Gurney Elevator Company.

This is one of Gurney's high-speed basement traction elevator machines. This type is H13VTE. The two types of controllers usually used with this machine are the types 41B and 42B. The controller type 42C exists however I am not sure if it's used with this machine.



The controller type 41B in use with the H13VTE machine.

It runs two speed and provides a very smooth ride when in operation.

The controller type 42B.



Big Kone M Series machine room

- Built in the 80s, slightly modernised in the 90s
- Speed **1.75m/s**
- Triplex group** (one lift serves as the fireman's lift)
- TMS 600** controller
- full intelligent leveling



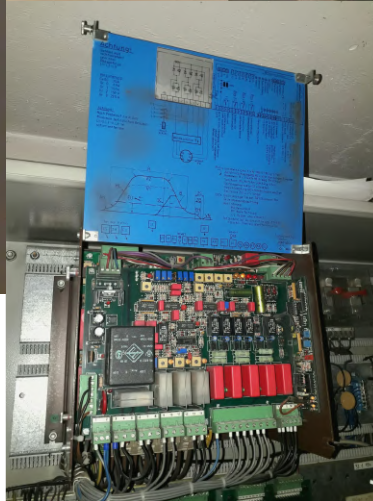
TecstuffLifts

Schmersal lift from 1994

SCHMERSAL
WUPPERTAL



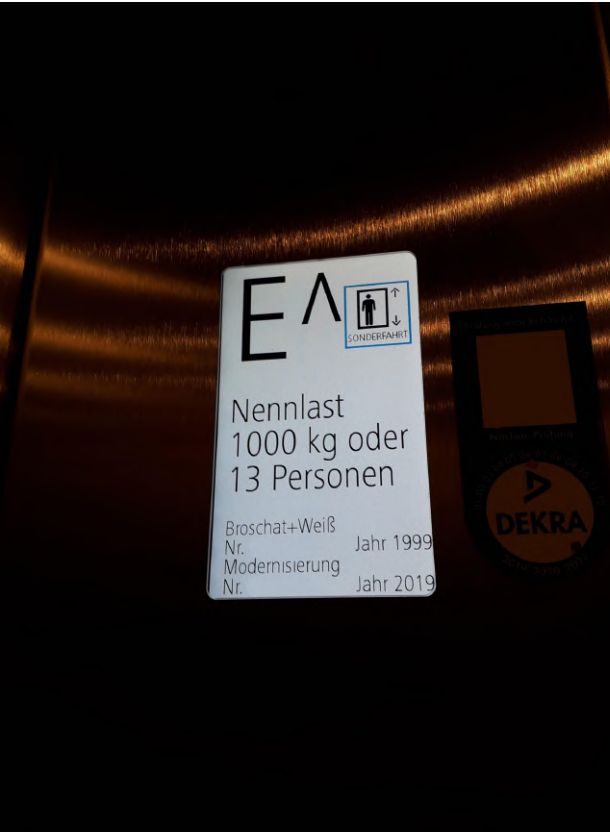
Here is an old Schmersal lift from 1994, it travels with 1.5m/s



This lift has an older version of Kollmorgen and has a thyristor drive (VVD) it is blind but runs very well and sounds nice too. The lift has a mix out of Kronenberg and Schäfer buttons.

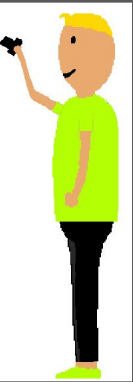
Schmersal sadly doesn't make lifts anymore, but they still manufacture lift parts (safety switches, logics, shaft positioning systems, etc).



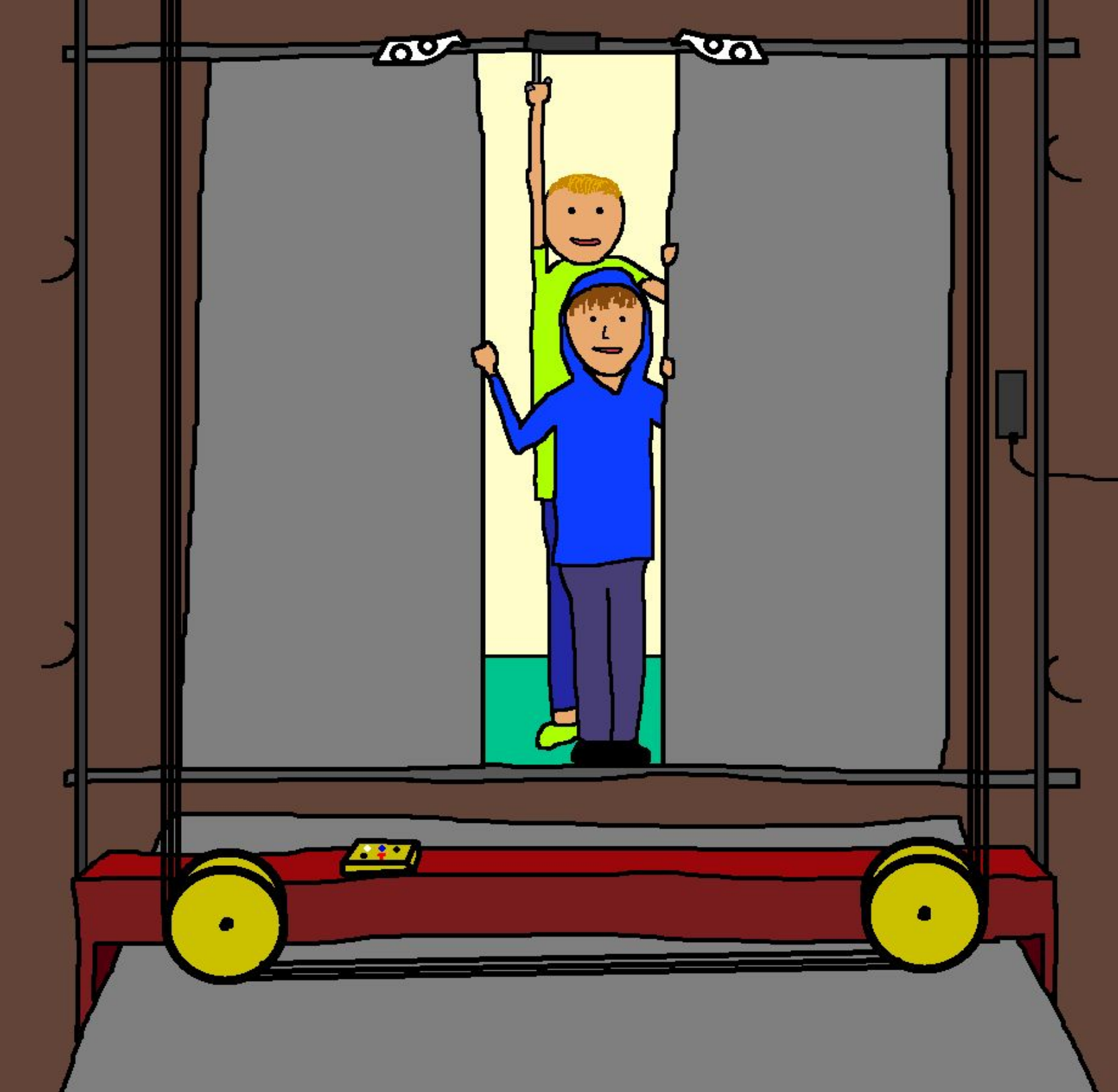


This lift used to be a generic but now it has been modernised by Schmitt and Sohn. The lift interior is very nice and well designed. It has MC12 logic (aka Newlift FST 2 logic) but had multiple codes with different menu access levels. But that didn't stopped us, as we found out what the highest access level code was! Also it has the new Control Techniques (Nidec) VF drive and now the lift is fully intelligent and does prestart and predoors. It travels at 1,75m/s.

BEN'S PAGES







THE END