





# TecstuffLifts

3.5m/s Thyssenkrupp lifts

page



thyssenkrupp



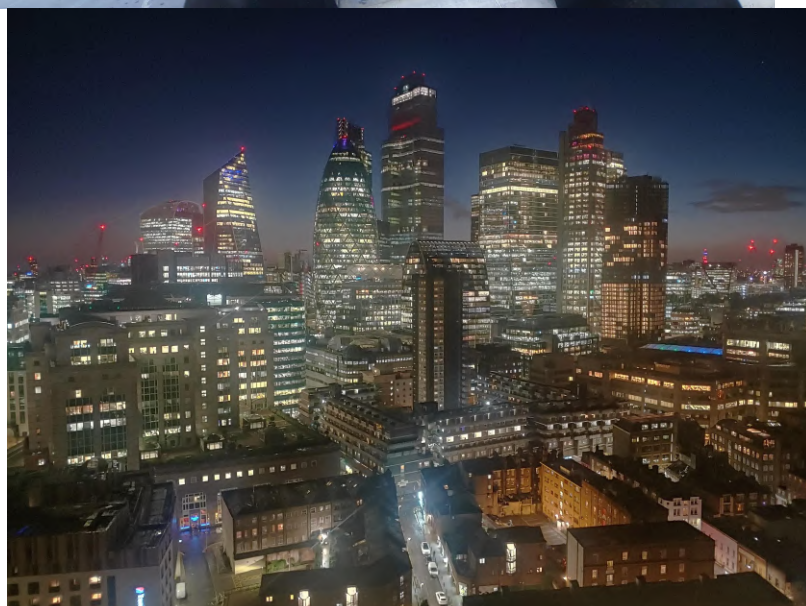
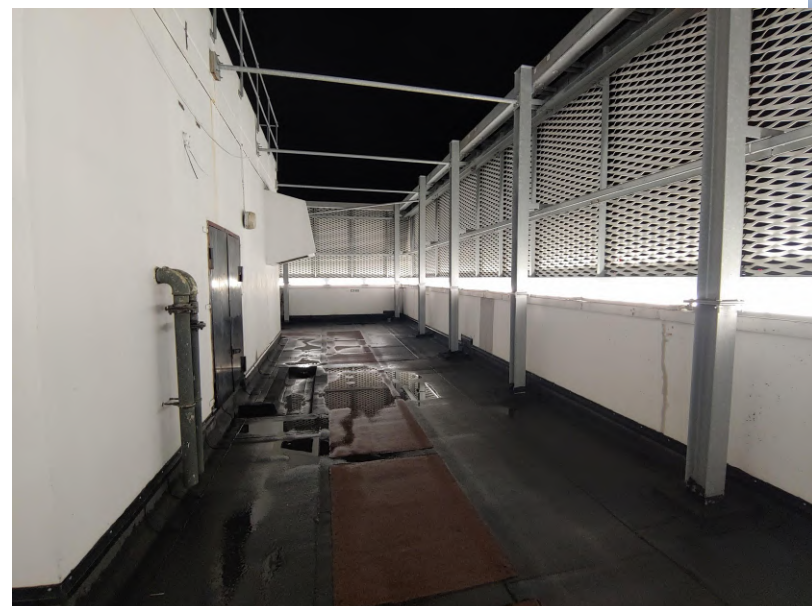
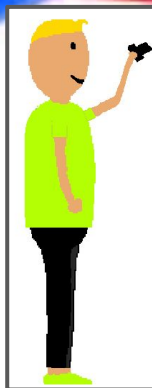
Some really nice 3,5m/s Thyssenkrupp lifts with destination dispatch. They have TCM controllers and massive ASM gearless machines. These lifts have replaced older lifts they used U key doors and some floors still have them.



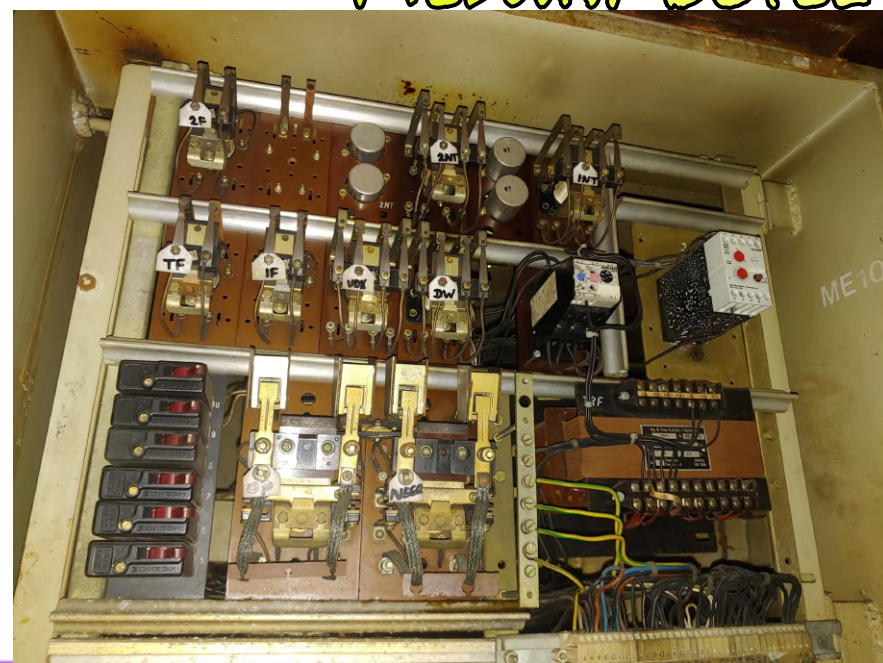
The machine room has two floors (top pictures-upper level, left picture-lower level with the governors). The lower level was used for the DC generators, but now they are VVVF driven.



# BEN'S PAGES

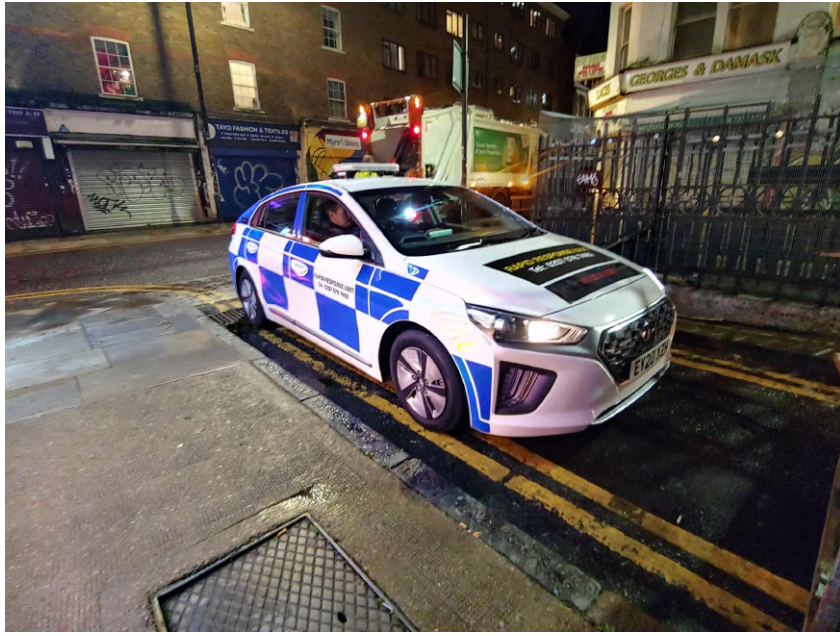


## 1970S OTIS RELAY LOGIC MEDWAY BOTEL DUMBWAITER





# PRIVATE POLICE FORCE



A new company called “My Local Bobby” runs a private police force (in other words private security pretending to be police) who you can pay to patrol your local streets.

Yet more private security thinking they are in charge of others.

They have no more rights than any other person. The only use of force they can do is to stop someone who has made a criminal offence from running away while the real police are called.

While I haven't had any personal experience with this company, I have had a lot of bad experience with this sort of thing.

Once security guards are made to feel powerful they always get power hungry. They often try to control people and regularly illegally detain people.



Private security from an unknown company in a unmarked van in Bromley High Street.

This security guard has a dog and has no right to use it in a public street.



# WEIRDNESS IN FOLKSTONE

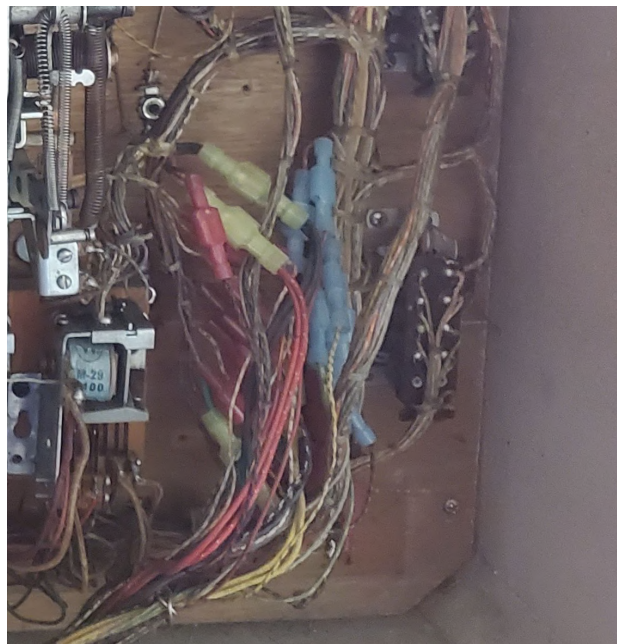




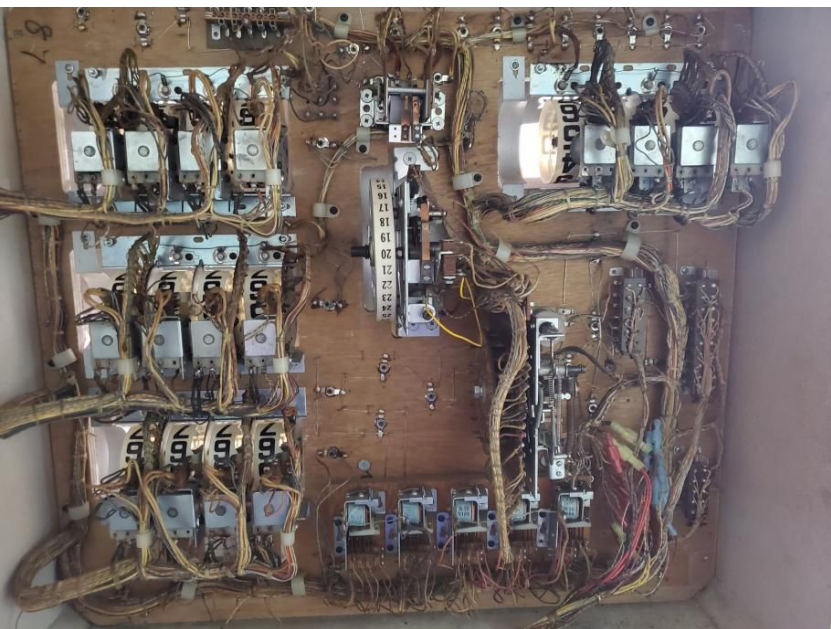
I thought I would like to show something special that as far as I know hasn't been discussed before in this community. I currently own two electro mechanical (EM) pinball machines made by the Williams Company in the mid 70's. During this period, pinball machines were becoming quite advanced. Only a few year prior, machines were typically single or double player. The machine below however is four players. Also, machines from the 60's had very boring gameplay, and terrible artwork.



Here is "Little Chief" from 1976. This machine was in a bar for many years, and was probably in commercial service until the late 90's. When we got this machine it was in desperate need of a fixing. Many parts were missing or incorrectly repaired. The bar owner probably tried to repair it himself, and in the process broke many parts of the machine. There were a few bad relays that we had to replace. But most of the fix was just cleaning contacts.



Above you can see an example of mistreatment. For whatever reason the 24 pin connector here was just ripped out. We replaced these with quick disconnect crimps. Not as convenient, but a lot easier than fabricating a 24 pin connector. You can see the smaller original ones right of center. Moral of the story, don't let drunk people work on relay logic machines.



Here you can see the score counting, and credit system. They are very simplistic. Just solenoids that move them one way or another. The relays that tell this unit the amount of points to add are under the playfield. There are also a row of relays at the bottom right

When working on these machines. It is important to replace the original bulbs in them. The 47's that were put in the machine in the 70's are terribly inefficient, and burn very hot. They will ruin the back glass and some of the plastics on the playfield. They will cause the



back glass to flake. Which is very expensive to replace





# EXPLOITED ELEVATORS

**Elevator/Lift Surfing in the USA and more!**

[Click here to see our website.](#)

## OCTOBER 2020 TOPICS:

### DOVER TRACTION SERVICE ELEVATOR/LIFT SURFING:

**This is a Dover Traditional service lift in an eight story office building. There are 6 lifts, 5 passenger lifts and 1 service lift. This lift is WELL BUILT. HEAVY DUTY CHASSIS and more! Speed is 350 FPM/1.75 m/s. The service lift has a higher ceiling in the back of the car and the motor is louder. THIS LIFT HAS NOT BEEN MAINTAINED IN A WHILE since there is a lot of dust on the cartop and buttons, and IT STILL WORKS IN AWESOME CONDITION! View the images and videos below:**

**IN THE VIDEO: I put in calls before I got on top. The lift cancelled them on safety break. I had to re-open the lift after I got off because I thought I put it in automatic but I didn't.**



### HYDRAULIC ELEVATOR/LIFT SURFING:

**This is a basic 4 floor hydraulic lift in a busy medical building. It was quite tricky to get on top because both lifts in the set were being used like crazy. Cartop controls were generic and I didn't have much time so I did inspection mode only.**



### SMART RISE HYDRAULIC ELEVATOR/LIFT CONTROLLER:

**SmartRise is a common generic controller in the USA, like UK lester controls. This is a machine room tour, and the lift does have an epic motor. It only goes 2 floors.**



**THESE VIDEOS AND IMAGES DO NOT GIVE YOU FULL KNOWLEDGE OF ELEVATOR/LIFT MACHINE ROOMS AND SHAFTS. I CANNOT BE HELD RESPONSIBLE FOR ACTIONS OF OTHER PEOPLE.**

# Eli's page.

Hello! I have met ben and jordan 3 times this year! Here are some photos.



Ben took this photo of me with a gas mask on. My gas mask is a polish MC-1 gas mask.

My MMOG its  
lift surfing  
time!  
character.





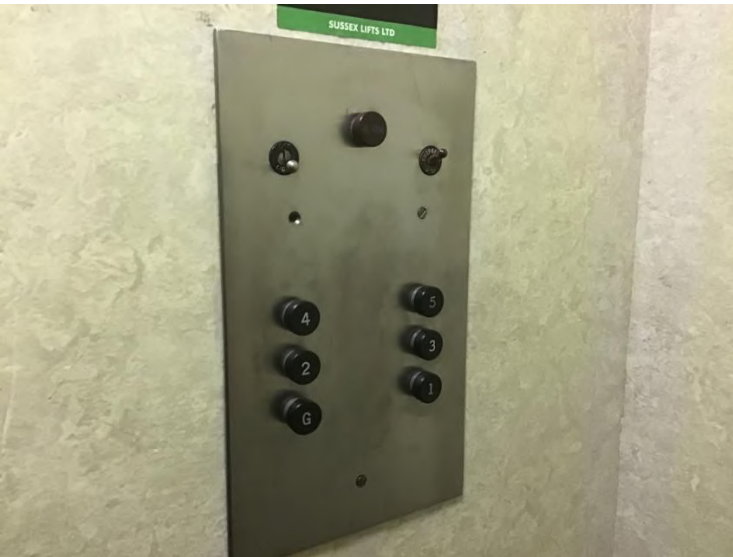
More photos from me (eli).





# More photos from me (eli).

Old otis lift buttons.



I am also interested in trains, computers, door closers, speakers, laundry chutes, aircraft, architecture, collecting model airplanes garbage chutes, electric chairs, radios and technology!



Recently i roofed the front of a block of flats in a high viz jacket and a gas mask to see peoples reactions! There were little kids pointing and laughing at me! The parents looked so shocked and didn't want their kids to see.

Fat woman tells me to get off the roof!

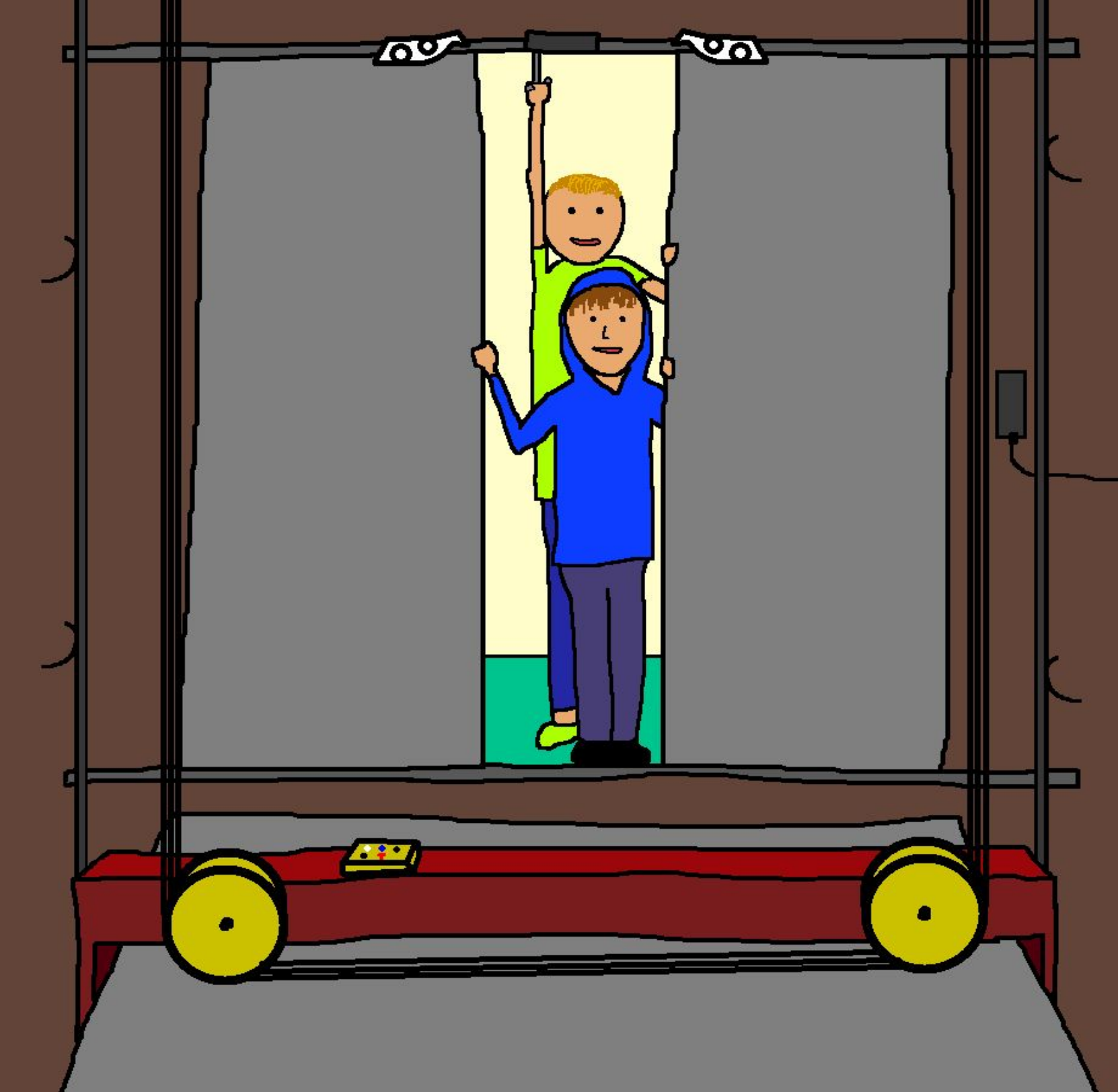
Recently i also went to a few transport museums and took some photos of trams.











**THE END**